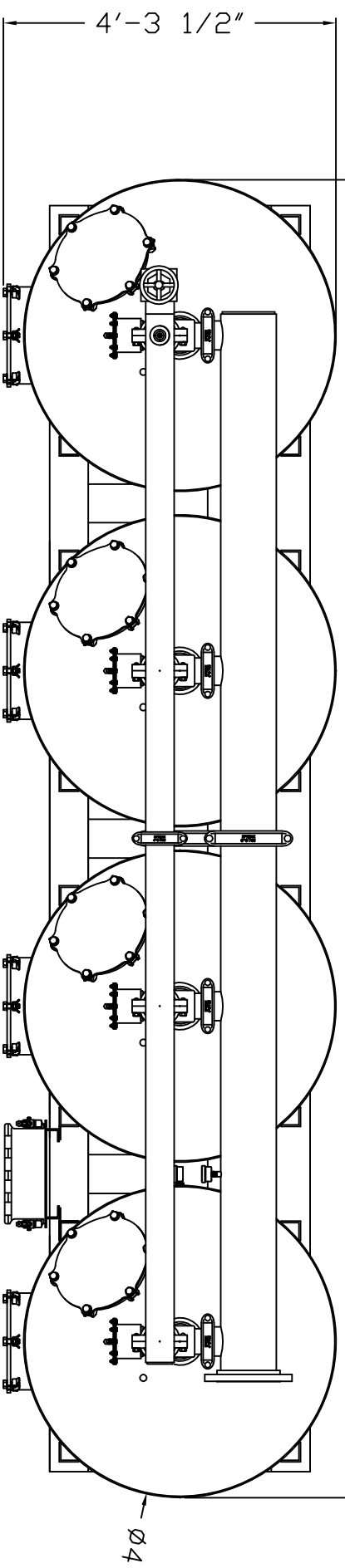


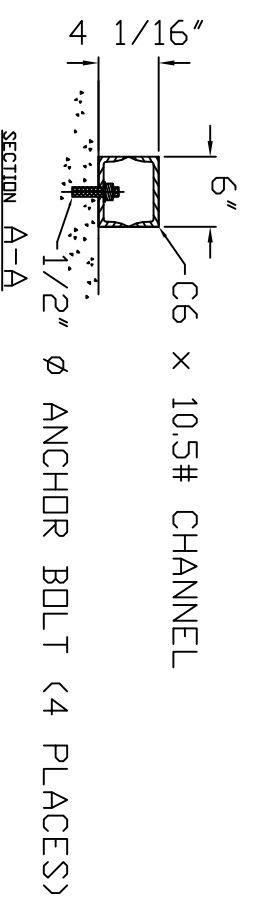
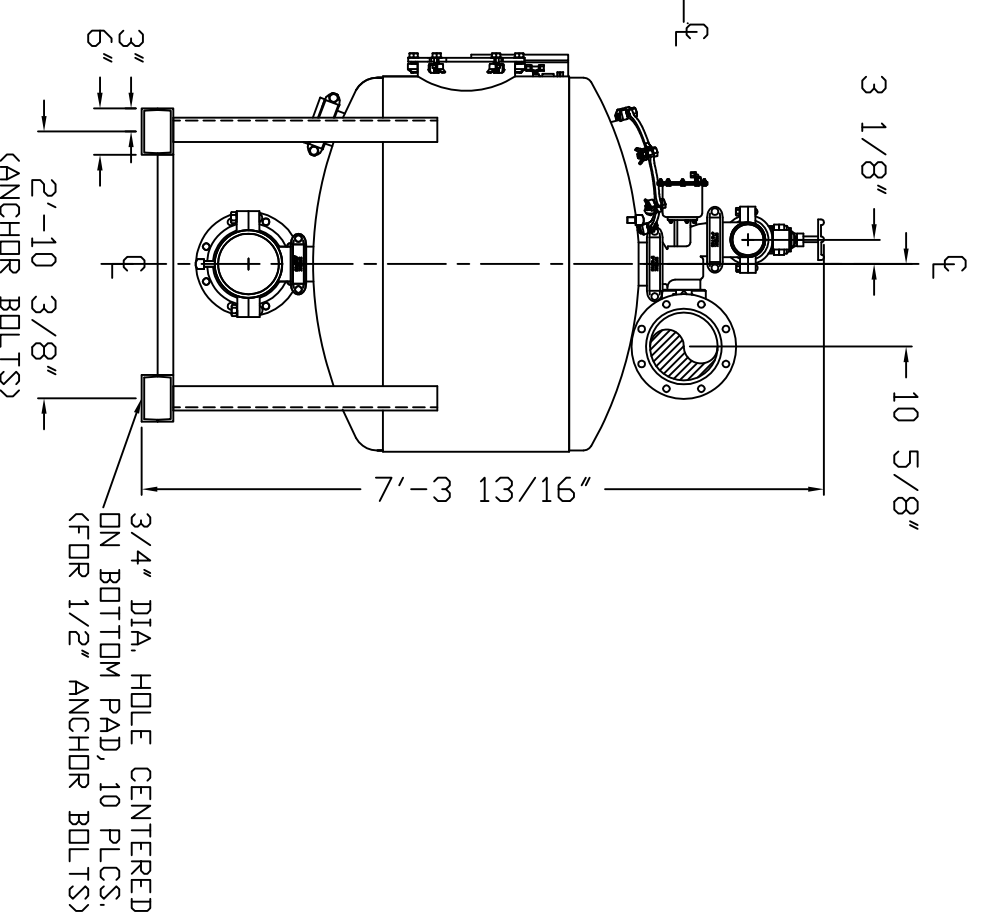
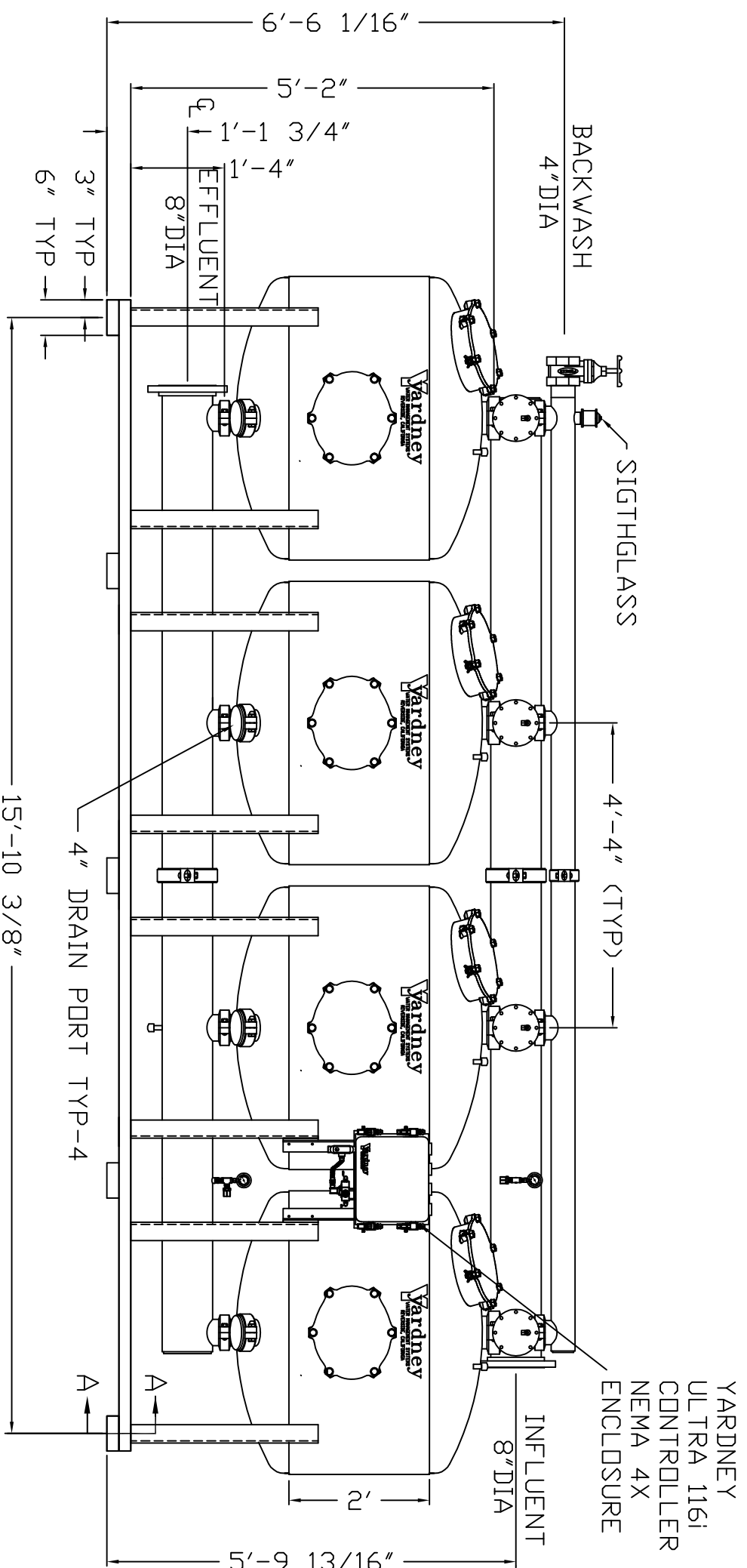
17'-0 3/8"



IL 4824-4A

NOTES:

1. FLOW RATE DESIGN: 504-756 GPM.
BACKWASH RATE: 15 GPM/FT².
2. MAXIMUM WORKING PRESSURE: 80 PSI.
3. ELECTRICAL REQUIREMENTS:
CONTROLLER 120V;
SOLENOIDS 24VAC; FACTORY WIRE
4. AIR SUPPLY REQUIRED: 2 CFM @ 70 PSIG (MIN.).
5. MEDIA REQUIREMENT PER TANK:
A. 1/2"x3/4" CRUSHED ROCK: 7.0 CU. FT.
B. 0.47mm CRUSHED SILICA SAND: 21.0 CU. FT.
6. WEIGHTS: (APPROX.)
EQUIPMENT: 3,920 LBS (LESS MEDIA)
MEDIA: 11,250 LBS
OPERATION: 18,000 LBS



THIS DRAWING, INCLUDING THE INFORMATION IT CONTAINS, IS CONFIDENTIAL, PROPRIETARY AND IS THE PROPERTY OF YARDNEY WATER MANAGEMENT, INC. IT IS SUBMITTED ONLY IN CONNECTION WITH THE TRANSACTION TO WHICH IT PERTAINS AND MUST NOT BE USED IN ANY OTHER MANNER DETRIMENTAL TO THE INTERESTS OF YARDNEY WATER MANAGEMENT. THE DRAWING IS NOT TO BE COPIED AND MUST BE RETURNED UPON REQUEST. YARDNEY WATER MANAGEMENT SYSTEMS, 1994

F	WELD TABS ON MANWAY RINGS	DDT	9-12	APP					
E	ADDED 4\"/>								
D	SKID SUPPORT FIXED AND MANWAY TO STD 6 BOLT 1	DDT	2-08	APP	BROWN	BY	K.A.T.	9/23/94	
C	SKID BACKS CORRECTED GPM FLOW RATES	DTC	10-05	APP					
B	STANDARDIZED NOTES	DTC	9-05	APP					
A	FIXED SKID FROM I BEAM TO STD 6 CHANNEL	DTC	1-05	APP					
SYM	REVISIONS	BY	DATE	APP					

APPROVALS DATE		APPROVALS DATE	
DESIGNED BY	DATE	CHECKED BY	DATE
DRAWN BY	DATE	APPROVED BY	DATE
ARCHITECTURAL		SCALE	
SIZE	DRAWING NO.	SCALE	
D	IL 4824-4A	SCALE	
	FILTER SYSTEM	ACAD #	SYSTEM IL
	9500482404	SHEET	1 OF 1



DD NOT SCALE DWG.