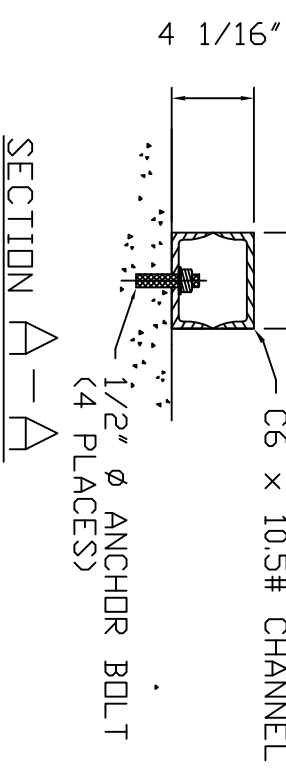
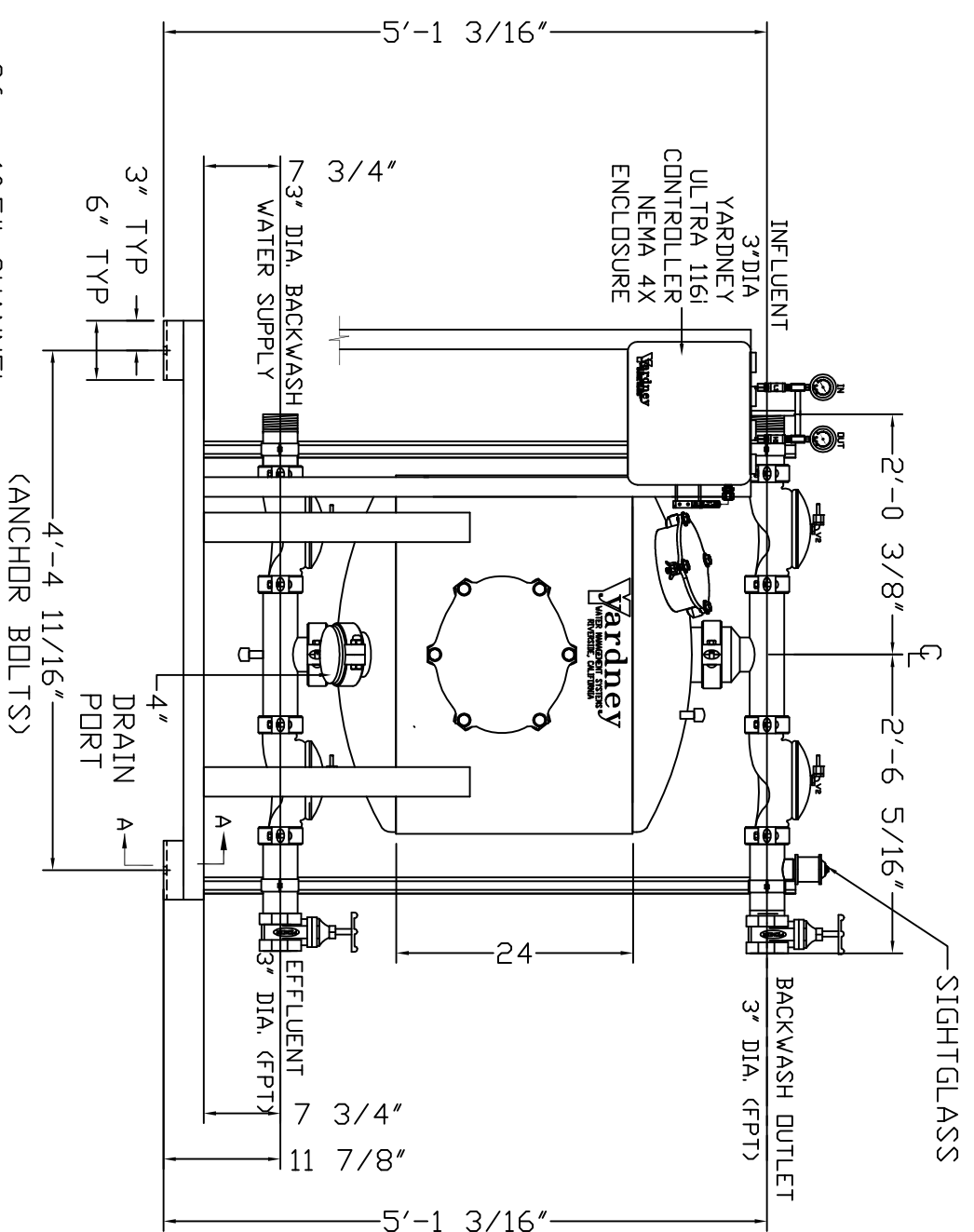
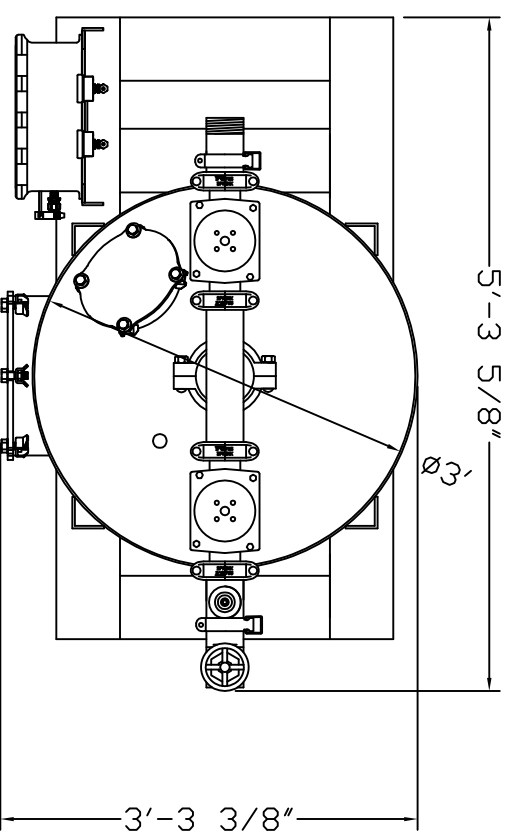
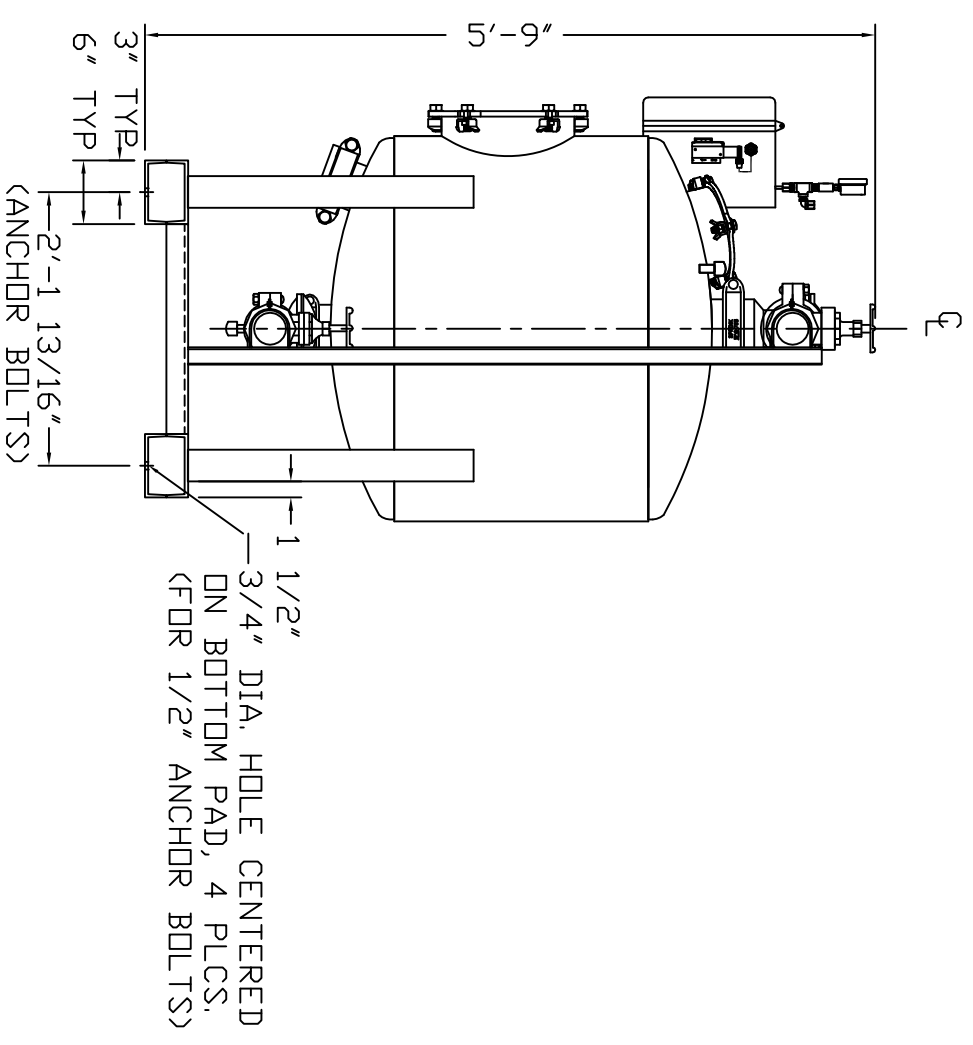


IL 3624-1A



NOTES:

1. FLOW RATE DESIGN: 71-107 GPM.
BACKWASH RATE: 15 GPM/FT².
2. MAXIMUM WORKING PRESSURE: 100 PSI.
3. ELECTRICAL REQUIREMENTS:
CONTROLLER 120V;
SOLENOIDS 24VAC; FACTORY WIRED
4. AIR SUPPLY REQUIRED: 2 CFM @ 70 PSIG (MIN.).
5. MEDIA REQUIREMENT PER TANK:
A. 1/2"x3/4" CRUSHED ROCK: 4.0 CU. FT.
B. 0.47mm CRUSHED SILICA SAND: 10.0 CU. FT.
6. WEIGHTS: (APPROX.)
EQUIPMENT: 625 LBS (LESS MEDIA)
MEDIA: 1,450 LBS
OPERATION: 2,650 LBS



<p>THIS DRAWING, INCLUDING THE INFORMATION IT CONTAINS, IS CONFIDENTIAL, PROPRIETARY, AND IS THE PROPERTY OF YARDNEY WATER MANAGEMENT SYSTEMS. IT IS TO BE USED IN CONNECTION WITH THE TRANSACTIONS IN WHICH IT PERTAINS AND MUST NOT BE USED IN ANY OTHER MANNER DETRIMENTAL TO THE INTERESTS OF YARDNEY WATER MANAGEMENT. THE DRAWING IS NOT TO BE COPIED AND MUST BE RETURNED UPON REQUEST. COPYRIGHT YARDNEY WATER MANAGEMENT SYSTEMS, 1998.</p>							
F	WELD TABS ON MANWAY RINGS	DDO	9-12	APP	BRANNAN	K.A.T.	6/22/98
E	ADDED 4" DRAIN PORT	DDO	11-09	APP	BRANNAN	K.A.T.	6/22/98
D	CORRECTED GPM FLOW RATES	DTC	10-05	APP	BRANNAN	K.A.T.	6/22/98
C	STANDARDIZED NOTES	DTC	9-05	APP	BRANNAN	K.A.T.	6/22/98
B	DRIP VALVE LENGTH INCORRECT WAS 9 13/16	DTC	1-05	APP	BRANNAN	K.A.T.	6/22/98
SYM	REVISIONS	BY	DATE	APP	SCALE	SCALE	SCALE



IL 3624-1A
TANK SYSTEM
9500362401
SHEET 1 OF 1