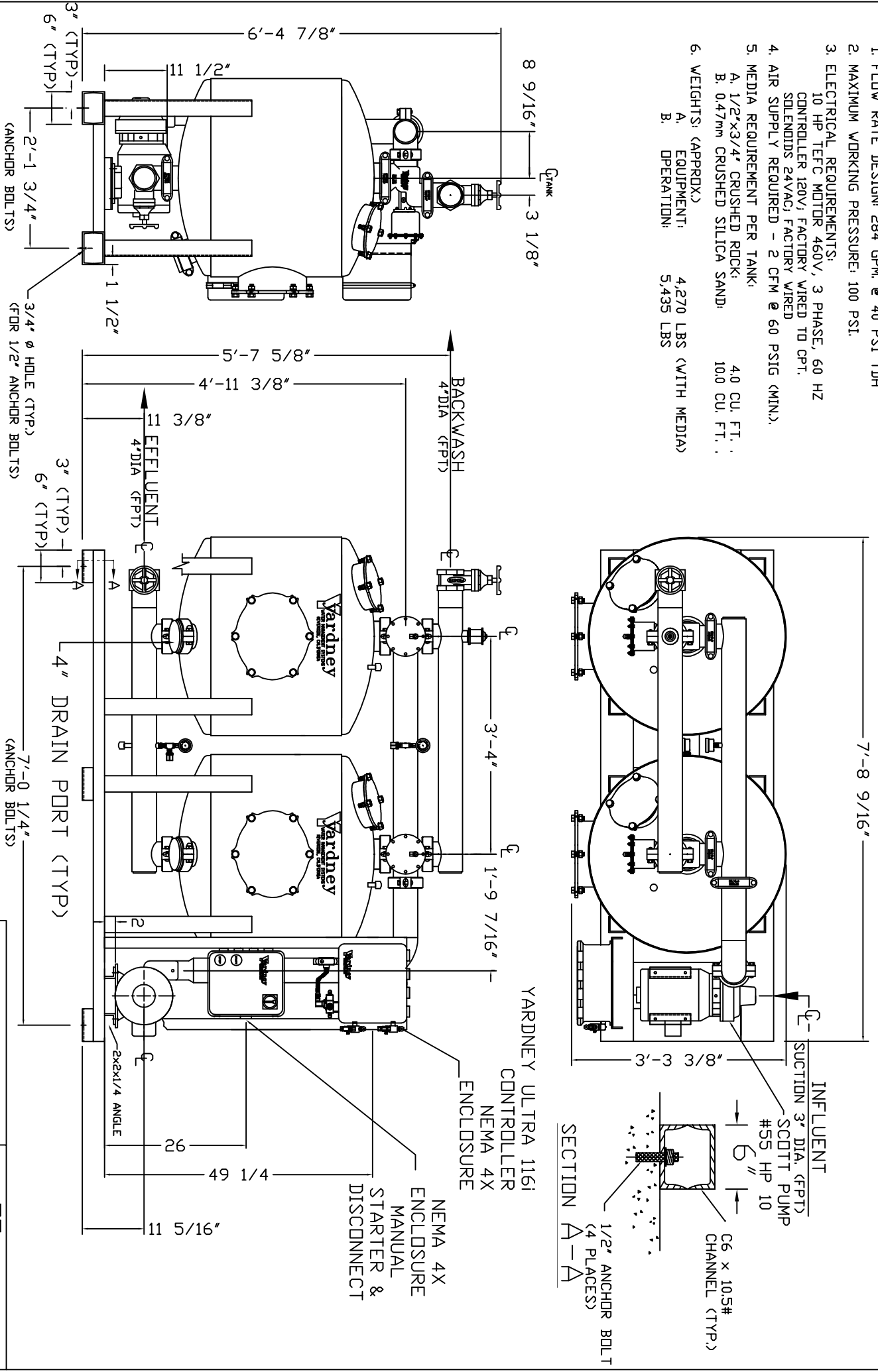


NOTES:

1. FLOW RATE DESIGN: 284 GPM @ 40 PSI TDH
2. MAXIMUM WORKING PRESSURE: 100 PSI.
3. ELECTRICAL REQUIREMENTS:
10 HP TEFC MOTOR 460V, 3 PHASE, 60 HZ
CONTROLLER 120V, FACTORY WIRED TO CPT.
SOLENOIDS 24VAC, FACTORY WIRED
4. AIR SUPPLY REQUIRED - 2 CFM @ 60 PSIG (MIN).
5. MEDIA REQUIREMENT PER TANK:
A. 1/2"x3/4" CRUSHED ROCK: 4.0 CU. FT.
B. 0.47mm CRUSHED SILICA SAND: 10.0 CU. FT.
6. WEIGHTS: (APPROX.)
A. EQUIPMENT: 4,270 LBS (WITH MEDIA)
B. OPERATION: 5,435 LBS

RCW 3624-2A



<p>THE DRAWING, INCLUDING THE DESCRIPTION OF SERVICE, IS THE PROPERTY OF YARDNEY WATER MANAGEMENT, INC. IT IS SUBMITTED ONLY IN CONNECTION WITH THE CONTRACT AND IS NOT TO BE REPRODUCED OR USED IN ANY OTHER MANNER WITHOUT THE WRITTEN PERMISSION OF YARDNEY WATER MANAGEMENT SYSTEMS, 1992</p>	
APPROVALS DATE:	APPROVED BY:
DESIGNED BY:	DESIGNED BY:
DRAWN BY:	DRAWN BY:
CHECKED BY:	CHECKED BY:
DATE:	DATE:
REVISED BY:	REVISED BY:
DATE:	DATE:
REVISED BY:	REVISED BY:
DATE:	DATE:

Yardney
WATER MANAGEMENT SYSTEMS

RCW 3624-2A
DUAL TANK SYSTEM

SIZE DRAWING NO: 9725036242
REV: C