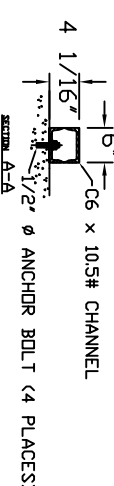
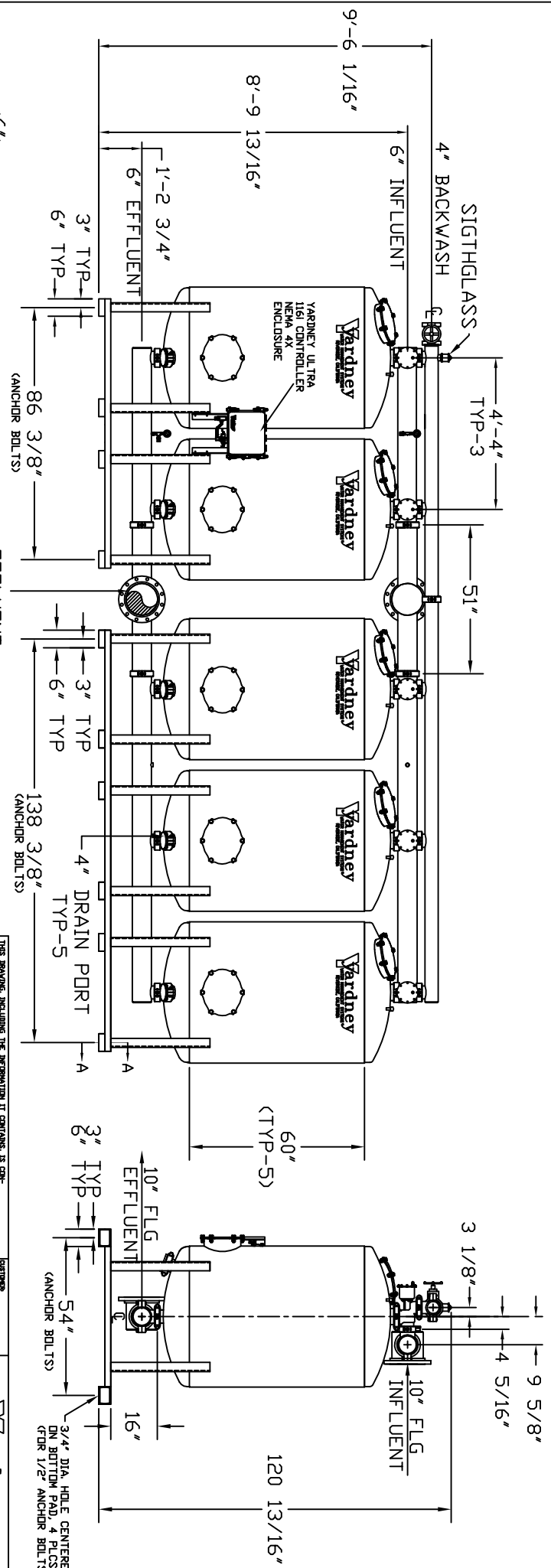


- NOTES:
1. FLOW RATE DESIGN: 315-945 GPM, MAX TO 1260 GPM.
 2. BACKWASH RATE: 15 GPM/FT².
 3. MAXIMUM WORKING PRESSURE: 80 PSI.
 4. ELECTRICAL REQUIREMENTS: CONTROLLER 120V, FACTORY WIRE SOLENOIDS 24VAC, FACTORY WIRE AIR SUPPLY REQUIRED: 2 CFM @ 70 PSIG (MIN).
 5. MEDIA REQUIREMENT PER TANK:
 - A. 1/2" x 3/4" CRUSHED ROCK: 7.0 CU. FT.
 - B. 1.45mm GARNET: 6.3 CU. FT.
 - C. 0.35mm GARNET: 19.0 CU. FT.
 - D. 0.75mm ANTHRACITE: 19.0 CU. FT.
 6. WEIGHTS (APPROX)
 - EQUIPMENT: 6,060 LBS (LESS MEDIA)
 - MEDIA: 23,085 LBS
 - OPERATION: 45,850 LBS

MM 4860-5A



THIS DRAWING, INCLUDING THE INFORMATION IT CONTAINS, IS THE PROPERTY OF YARDNEY WATER MANAGEMENT SYSTEMS, INC. IT IS LOANED TO YOU BY YARDNEY WATER MANAGEMENT SYSTEMS, INC. IN CONNECTION WITH THE TRANSACTIONS TO WHICH IT RELATES AND MUST NOT BE REPRODUCED, COPIED, EITHER WHOLLY OR IN PART, OR TRANSMITTED IN ANY FORM OR BY ANY MEANS, WITHOUT THE WRITTEN PERMISSION OF YARDNEY WATER MANAGEMENT SYSTEMS, INC. THE DRAWING IS NOT TO BE CONSIDERED A CONTRACT.			
E	FIXED MEDIA REQUIREMENTS	DD	5-10
D	ADDED 4" DRAIN PORT	DD	11-09
C	CORRECTED GPM FLOW RATES	DTC	10-05
B	STANDARDIZED NOTES	DTC	9-05
A	Ø54" TANK DRAWN INCORRECT	DTC	4-05
NO.	REVISION	BY	DATE

Yardney
WATER MANAGEMENT SYSTEMS, INC.

MM 4860-5A
FILTER SYSTEM

REV: E

DRAWING NO: 9500486005

LOCATION: SYSTEMS-MM

SHEET 1 OF 1