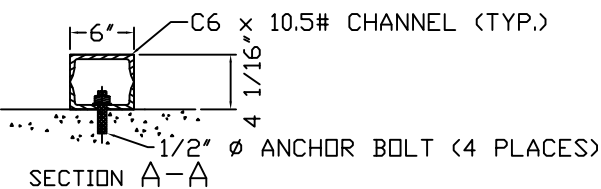
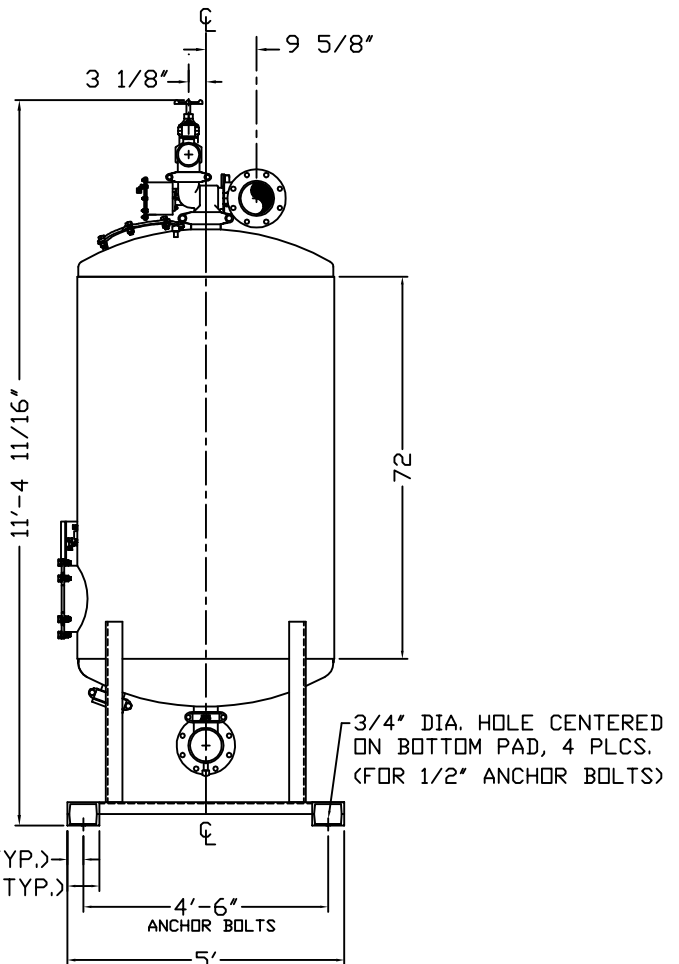
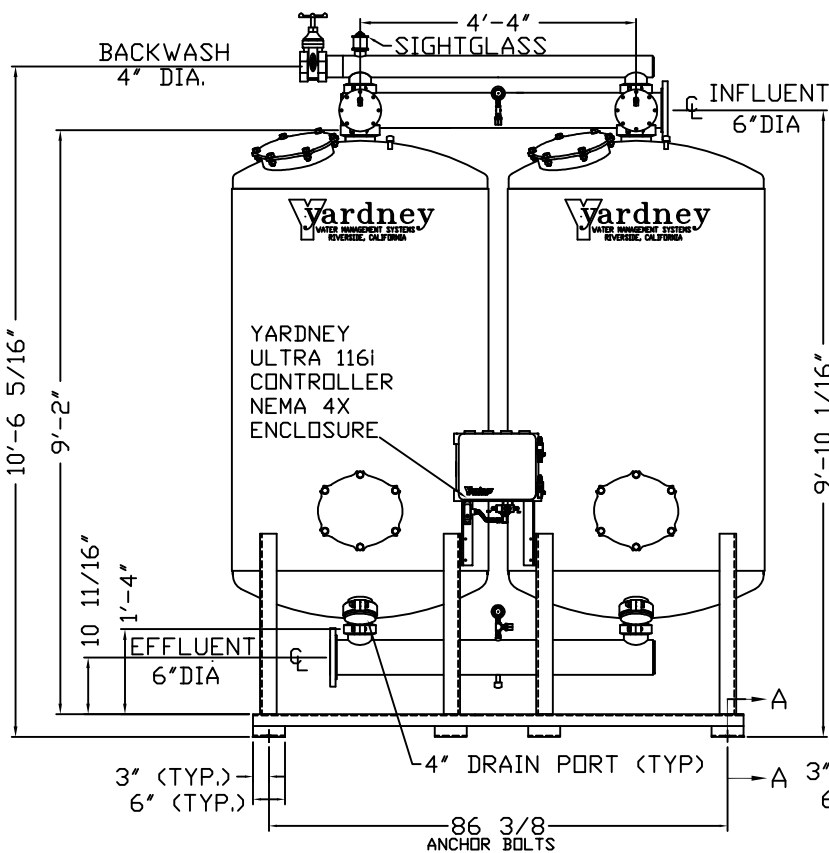
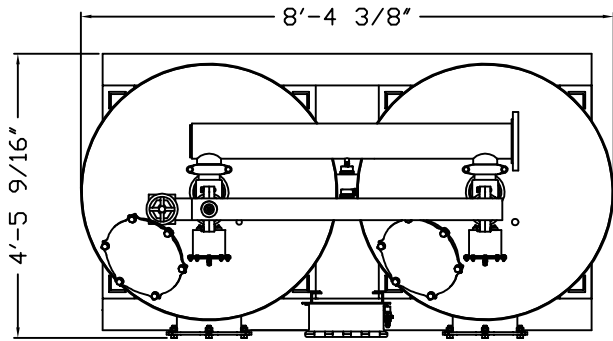


GAC 4872-2A

NOTES:

1. FLOW RATE DESIGN: 126-378 GPM; MAX TO 504 GPM.
BACKWASH RATE: 10 GPM/FT².
2. MAXIMUM WORKING PRESSURE: 80 PSI.
3. ELECTRICAL REQUIREMENTS:
CONTROLLER 120V;
SOLENOIDS 24VAC; FACTORY WIRED
4. AIR SUPPLY REQUIRED: 2 CFM @ 70 PSIG (MIN.).
5. MEDIA REQUIREMENT PER TANK:
A. 1/2"x3/4" CRUSHED ROCK: 7.0 CU. FT. .
B. GRANULAR ACTIVATED CARBON: 50.0 CU. FT. .
6. WEIGHTS: (APPROX.)
EQUIPMENT: 2,550 LBS (LESS MEDIA)
MEDIA: 4,325 LBS
OPERATION: 13,450 LBS



THIS DRAWING, INCLUDING THE INFORMATION IT CONTAINS, IS CONFIDENTIAL, PROPRIETARY AND IS THE PROPERTY OF YARDNEY WATER MANAGEMENT, INC. IT IS SUBMITTED ONLY IN CONNECTION WITH THE TRANSACTION TO WHICH IT PERTAINS AND MUST NOT BE USED IN ANY OTHER MANNER DETRIMENTAL TO THE INTERESTS OF YARDNEY WATER MANAGEMENT. THE DRAWING IS NOT TO BE COPIED AND MUST BE RETURNED UPON REQUEST. COPYRIGHT YARDNEY WATER MANAGEMENT SYSTEMS, 1998				DO NOT SCALE DWG	
APPROVALS		DATE	DRAWN BY: C.A.T. (02/20/98)		
D	ADDED 4\"/>				
C	CHG MANWAY'S WAS 8 X 10; ADDED SIGHTGLASS	BTD 9-07	APP	DESIGNED BY:	
B	STANDARDIZED NOTES	BTC 9-05	APP	APPROVED BY:	
A	CORRECTED TANK SIZE	BTC 12-04	APP	ARCHITECTURAL SCALE:	
SYM	REVISIONS	BY	DATE	APP	
Yardney WATER MANAGEMENT SYSTEMS RIVERSIDE, CALIFORNIA			GAC 4872-2A FILTER SYSTEM		
SIZE			DRAWING NO. 9500487202		REV. D
SOLD			DWG NO. SYSTEM/GAC		SHEET 1 OF 1