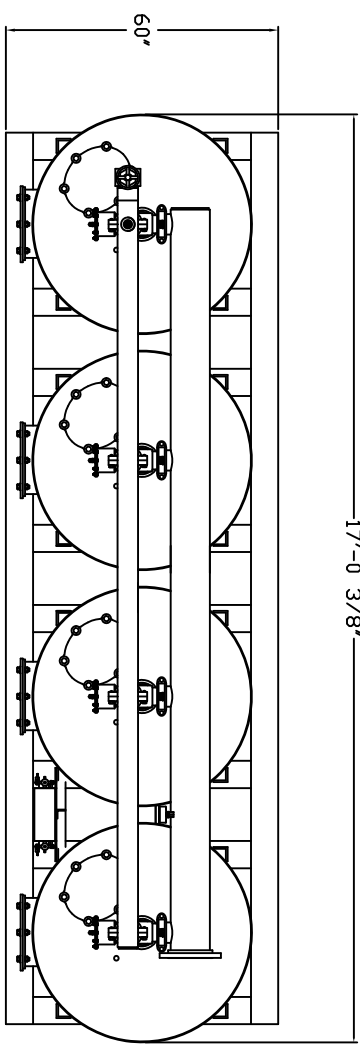
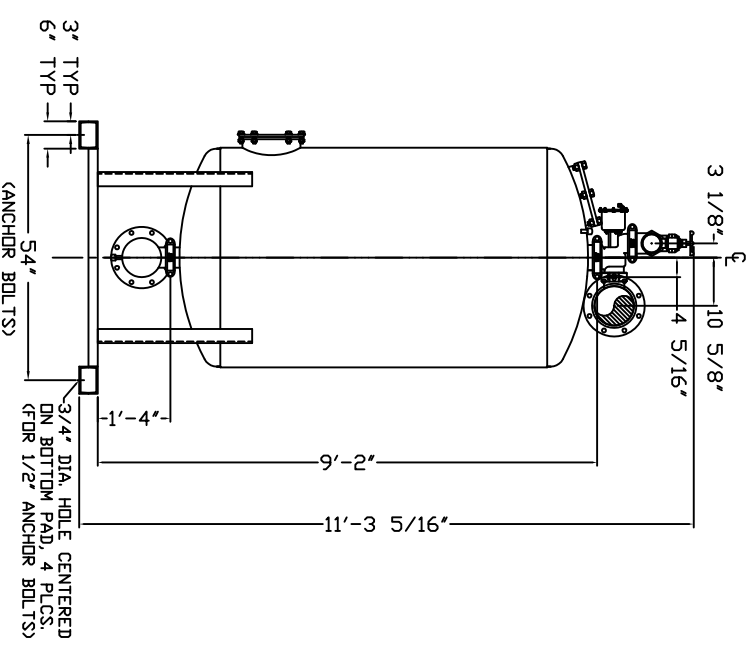
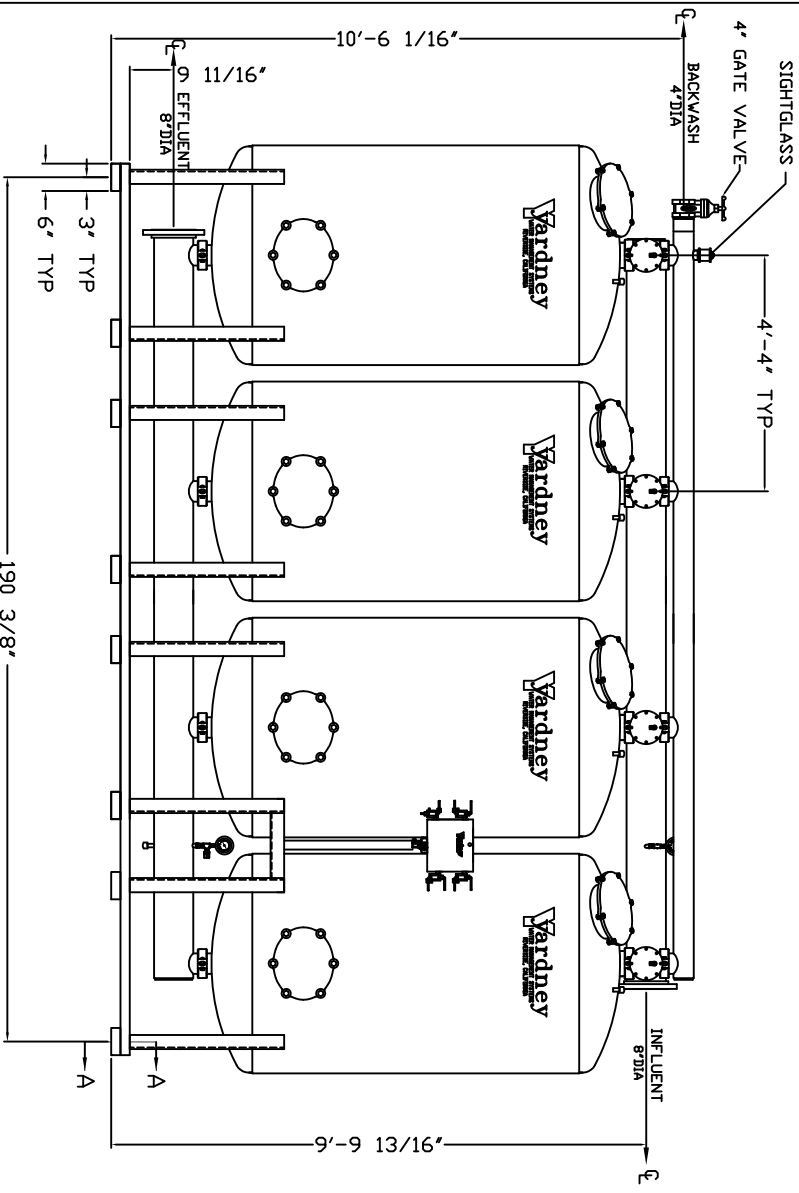


GAC 4872-4A

17'-0 3/8"



- NOTES:
1. FLOW RATE DESIGN = 252-504 GPM; MAX TD 960 GPM
 2. MAXIMUM WORKING PRESSURE - 80 PSI .
 3. ELECTRICAL REQUIREMENTS:
 - CONTROLLER 120V;
 - SOLENOIDS 24VAC; FACTORY WIRED
 4. AIR SUPPLY REQUIRED: 2 CFM @ 70 PSIG (MIN.) .
 5. MEDIA REQUIREMENT PER TANK:
 - A. 1/2"x3/4" CRUSHED ROCK - 710 CU. FT. .
 - B. GRANULAR ACTIVATED CARBON - 500 CU. FT. .
 6. WEIGHTS: (APPROX.)
 - EQUIPMENT - 5,450 LBS
 - MEDIA - 8,650 LBS
 - OPERATION - 27,300 LBS
 7. GROOVED INFLUENT-EFFLUENT AVAILABLE, CONSULT FACTORY .



DD NOT SCALE DWG.

		APPROVAL DATE GAC 4872-4A FILTER SYSTEM	
THIS DRAWING, INCLUDING THE INFORMATION THEREON, IS THE PROPERTY OF YARDNEY WATER MANAGEMENT, INC. IT IS SUBMITTED ONLY IN CONNECTION WITH THE INVESTMENT TO WHICH IT PERTAINS AND MUST NOT BE REPRODUCED OR TRANSMITTED IN ANY FORM OR BY ANY MEANS, ELECTRONIC OR MECHANICAL, INCLUDING PHOTOCOPYING, RECORDING, OR BY ANY INFORMATION STORAGE AND RETRIEVAL SYSTEMS, WITHOUT THE WRITTEN PERMISSION OF YARDNEY WATER MANAGEMENT, INC. THE DRAWING IS NOT TO BE USED FOR ANY OTHER PROJECT OR WATER TREATMENT SYSTEMS, 1994		SIZE: ISOGRAPHIC NO. 9500487204 SHEET NO. 1 OF 1	
REVISIONS	BY DATE APP	CHECKED BY DATE	REVISED BY DATE