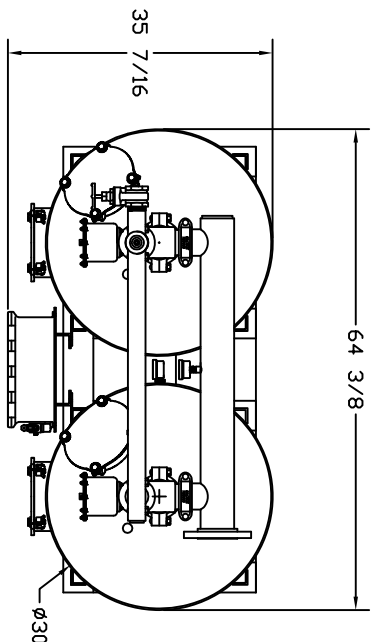
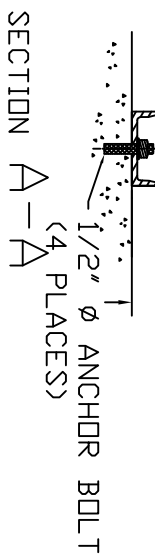
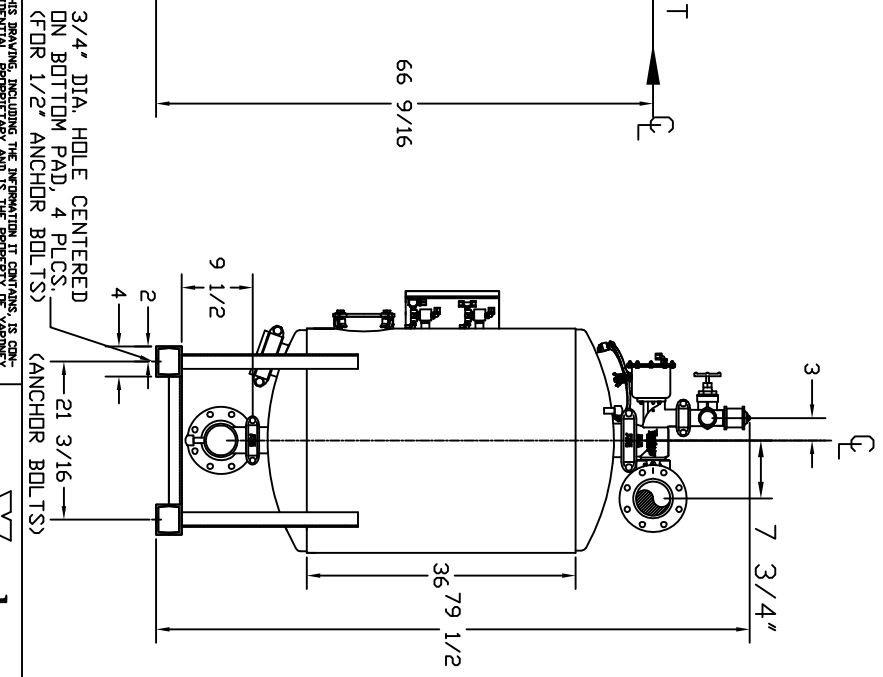
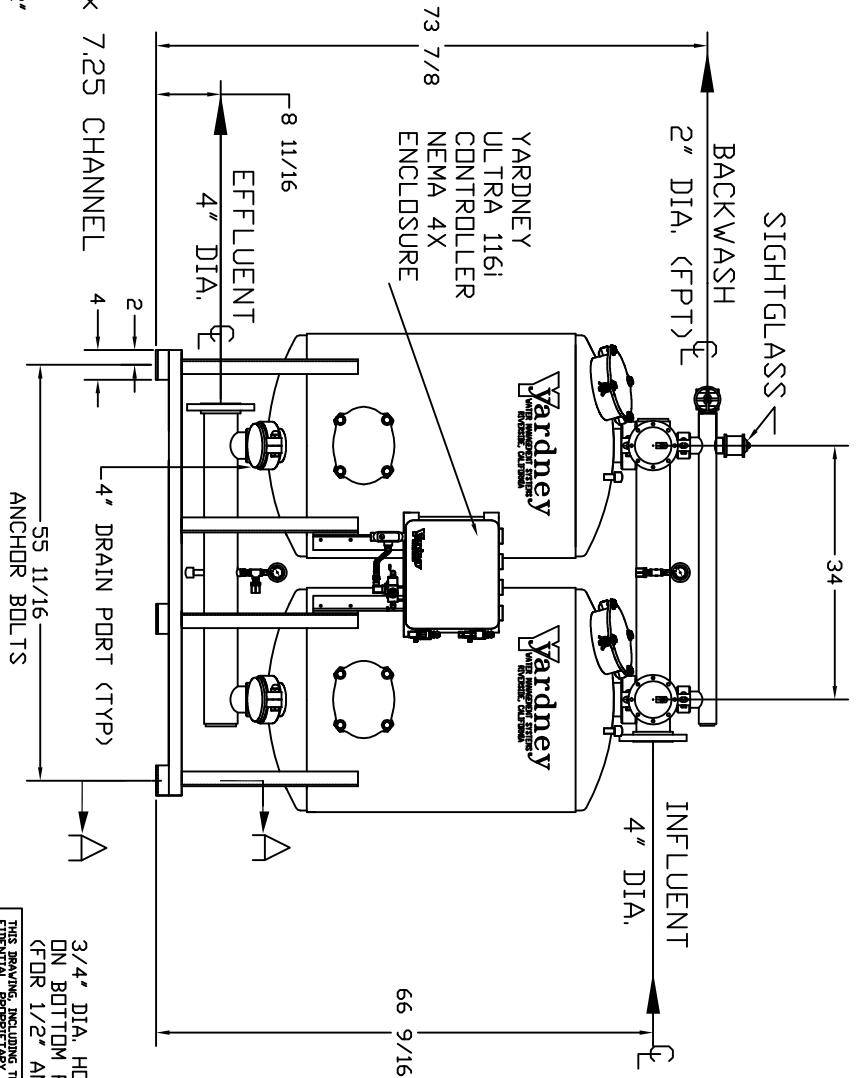


IL 3036-2A



- NOTES:
1. FLOW RATE DESIGN: 98-147 GPM, BACKWASH RATE: 15 GPM/FT².
 2. MAXIMUM WORKING PRESSURE: 100 PSI.
 3. ELECTRICAL REQUIREMENTS: CONTROLLER 120V; SOLENOIDS 24VAC; FACTORY WIRE AIR SUPPLY REQUIRED: 2 CFM @ 70 PSIG (MIN.).
 4. MEDIA REQUIREMENT PER TANK:
 - A. 1/2"x3/4" CRUSHED ROCK: 2.5 CU. FT.
 - B. 0.47mm CRUSHED SILICA SAND: 12.0 CU. FT.
 5. WEIGHTS: (APPROX.) EQUIPMENT: 940 LBS (LESS MEDIA); MEDIA: 2,925 LBS; OPERATION: 4,600 LBS



THIS DRAWING, INCLUDING THE INFORMATION IT CONTAINS, IS CONFIDENTIAL, PROPRIETARY AND IS THE PROPERTY OF YARDNEY WATER MANAGEMENT SYSTEMS. IT IS TO BE USED ONLY IN CONNECTION WITH THE TRANSACTIONS TO WHICH IT PERTAINS AND MUST NOT BE USED IN ANY OTHER MANNER DETRIMENTAL TO THE INTERESTS OF YARDNEY WATER MANAGEMENT. THE DRAWING IS NOT TO BE COPIED OR REPRODUCED IN ANY MANNER WITHOUT THE WRITTEN PERMISSION OF YARDNEY WATER MANAGEMENT SYSTEMS, INC.

REV.	DATE	BY	APP.	REVISIONS
A	01/11/09	APP	APPROVED	STANDARDIZED NOTES
B	01/11/09	APP	APPROVED	CORRECTED GPM FLOW RATES
C	01/11/09	APP	APPROVED	ADDED 4" DRAIN PORT
D	09/12/10	APP	APPROVED	WELD TABS ON MANWAY RINGS

APPROVALS DATE

Yardney WATER MANAGEMENT SYSTEMS

IL 3036-2A
FILTER SYSTEM

SIZE DRAWING NO. 9500303602

SCALE NONE

SHEET 1 OF 1