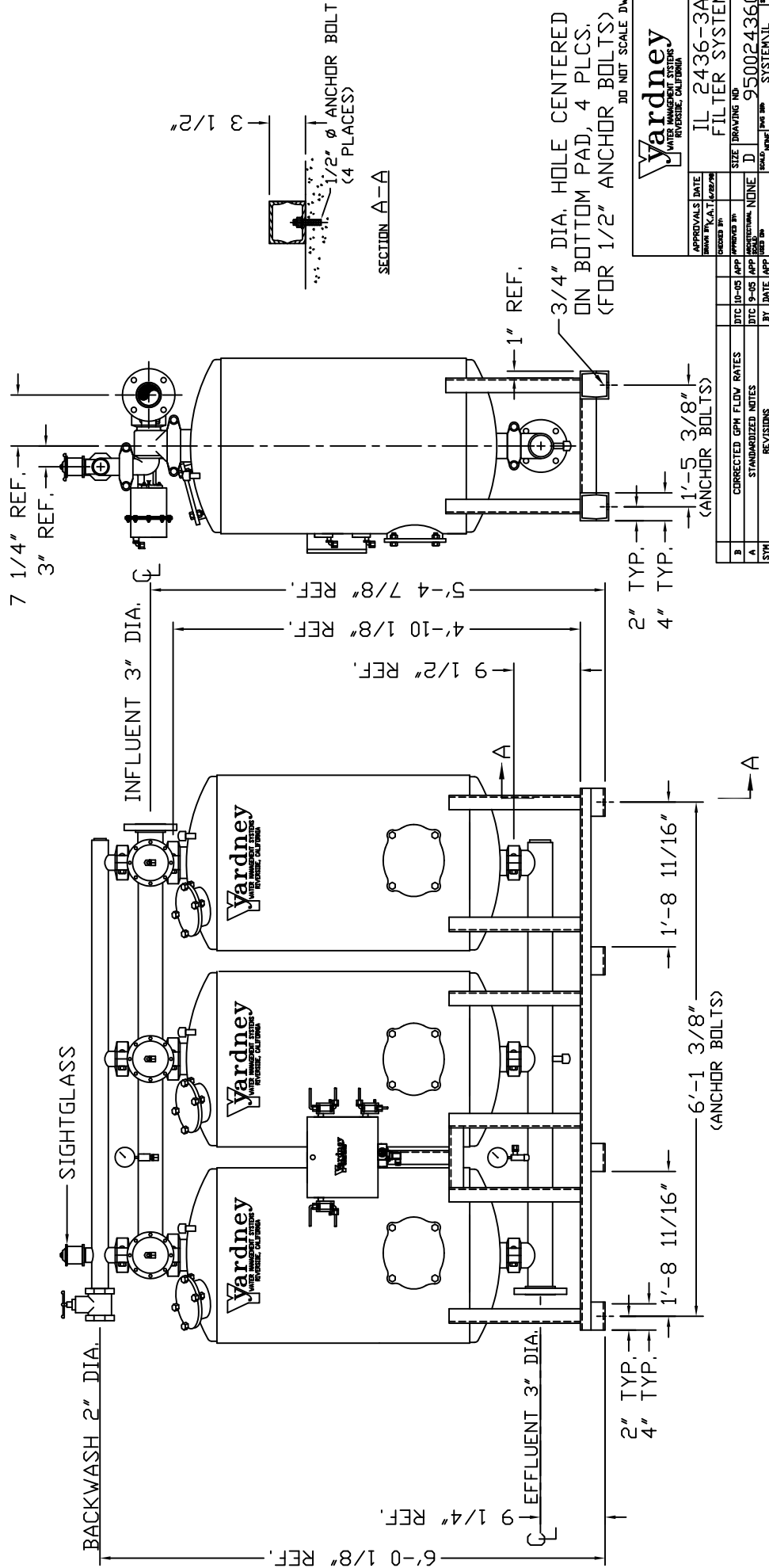
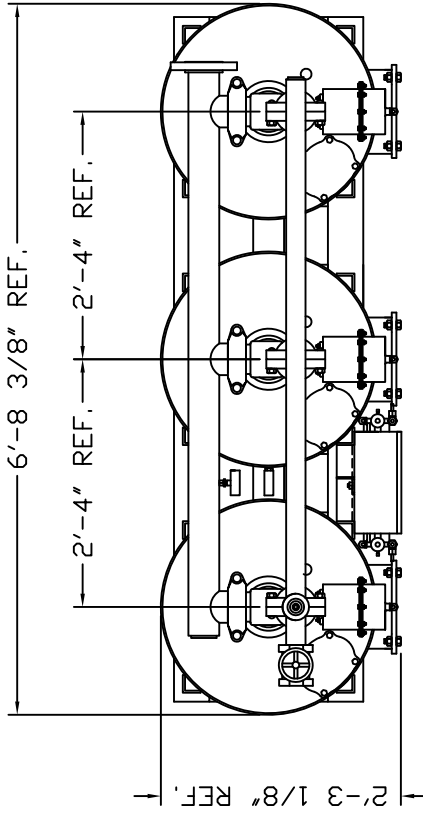


IL 2436-3A

NOTES:

1. FLOW RATE DESIGN = 95-142 GPM; MAX TO 189 GPM
2. MAXIMUM WORKING PRESSURE - 100 PSI .
3. ELECTRICAL REQUIREMENTS:
 - CONTROLLER 120V/
 - SOLENOIDS 24VAC; FACTORY WIRED
4. AIR SUPPLY REQUIRED: 2 CFM @ 70 PSIG (MIN.).
5. MEDIA REQUIREMENT PER TANK:
 - A. 1/2"x3/4" CRUSHED ROCK - 1.5 CU. FT. .
 - B. 0.47mm CRUSHED SILICA SAND - 7.5 CU. FT. .
6. WEIGHTS: (APPROX.)
 - EQUIPMENT - 1,000 LBS (LESS MEDIA)
 - MEDIA - 2,750 LBS
 - OPERATION - 4,400 LBS
7. GROOVED INFLUENT-EFFLUENT AVAILABLE, CONSULT FACTORY .



Yardney
WATER MANAGEMENT SYSTEMS
RIVERSIDE, CALIFORNIA

APPROVALS	DATE	BY	DATE	BY	DATE	BY
DESIGNED BY	W.C.A.T.	CHECKED BY	W.C.A.T.	APPROVED BY	W.C.A.T.	DATE
SIZE	DRAWING NO.	PROJECT	NO.	REV.	DATE	BY
SCALE	NO.	NO.	NO.	NO.	NO.	NO.
SYTH	A	B	C	D	E	F
CORRECTED GPM FLOW RATES	DTC 10-05	APR	10-05	APR	10-05	APR
STANDARDIZED NOTES	DTC 5-05	APR	5-05	APR	5-05	APR
REVISIONS	BY	DATE	BY	DATE	BY	DATE
IL 2436-3A	WATER MANAGEMENT SYSTEMS	9500243603	1	1	1	1

DO NOT SCALE DWG.
3/4" DIA. HOLE CENTERED ON BOTTOM PAD, 4 PLCS. (FOR 1/2" ANCHOR BOLTS)