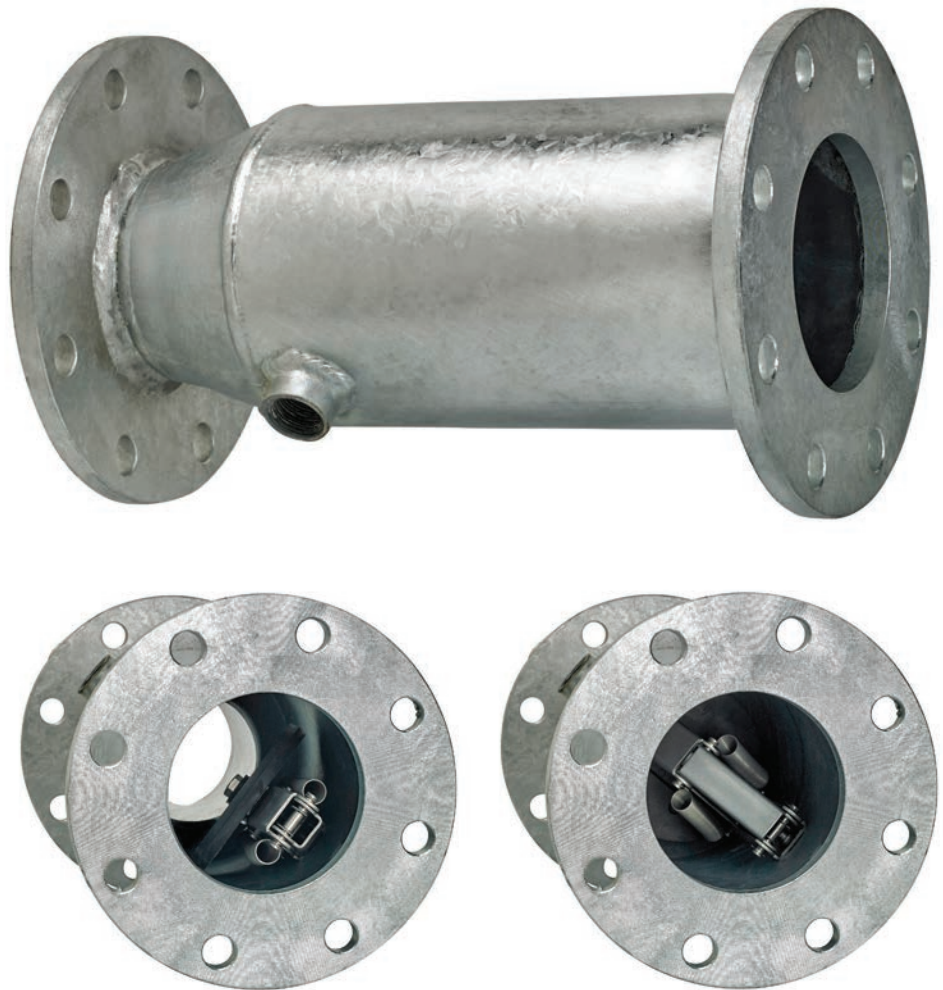


**Yardney Galvanized Check Valves feature:**

- Galvanized steel body
- Stainless springs and swing arm
- Rubber-to-rubber gasket
- 3/4" NPT fitting with galvanized plug for winterization and/or draining the system during shut down
- Eliminates priming of pump when pump is shut down by retaining water in intake pipe
- ANSI flange on inlet and outlet

SPECIFICATIONS   GALVANIZED CHECK VALVES			
Model	Part Number	Description	List Price
GCV-6-8	146129007	6" ANSI Flange x Flange with 8" Seat	\$ 425.14
GCV-8-10	146129008	8" ANSI Flange x Flange with 10" Seat	\$ 494.40
GCV-10-12	146129010	10" ANSI Flange x Flange with 12" Seat	\$ 600.51
GCV-12-10	146129013	12" ANSI Flange x Flange with 10" Seat	\$ 711.83
GCV-12-12	146129014	12" ANSI Flange x Flange with 12" Seat	\$ 1331.69

Recommended installation at least 10 pipe diameters away from pump.



Phone: 951.656.6716  
Toll-Free: 800.854.4788  
Fax: 951.656.3867  
info@yardneyfilters.com

[www.yardneyfilters.com](http://www.yardneyfilters.com)