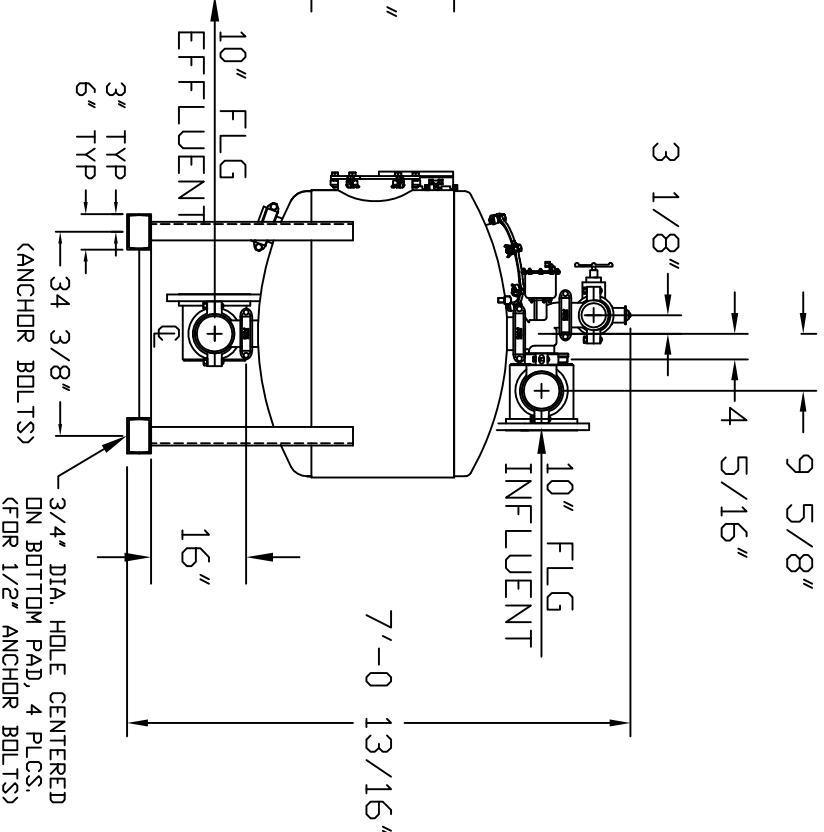
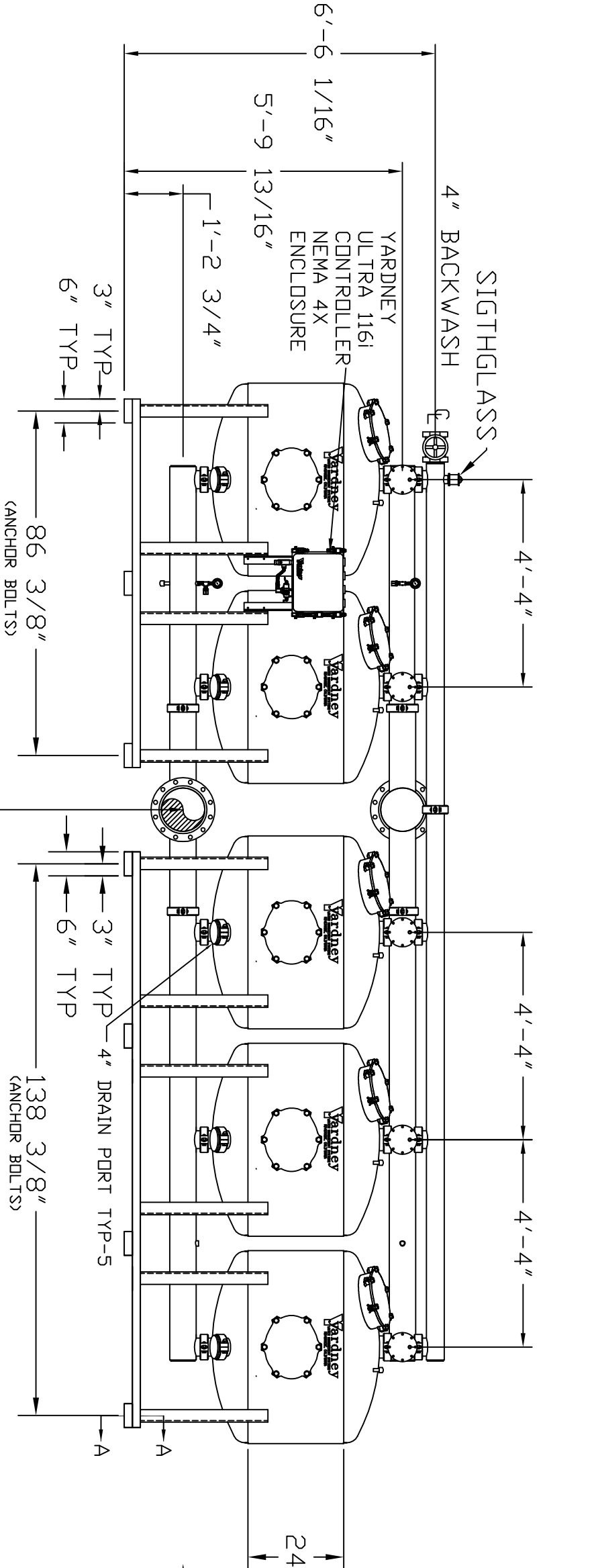
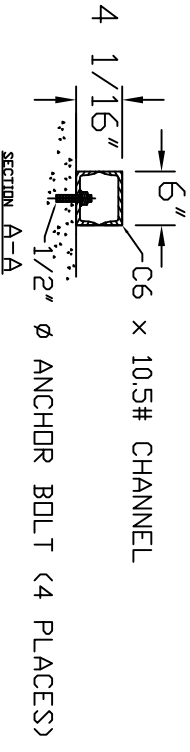


- NOTES:
1. FLOW RATE DESIGN: 630-945 GPM.
BACKWASH RATE: 15 GPM/FT².
 2. MAXIMUM WORKING PRESSURE: 80 PSI.
 3. ELECTRICAL REQUIREMENTS:
CONTROLLER 120V;
SOLENOIDS 24VAC; FACTORY WIRED
AIR SUPPLY REQUIRED: 2 CFM @ 70 PSIG (MIN.).
 4. MEDIA REQUIREMENT PER TANK:
A. 1/2"x3/4" CRUSHED ROCK: 7.0 CU. FT.
B. 0.47mm CRUSHED SILICA SAND: 21.0 CU. FT.
 6. WEIGHTS: (APPROX.)
EQUIPMENT: 4,525 LBS (LESS MEDIA)
MEDIA: 14,025 LBS
OPERATION: 22,150 LBS



EFFLUENT
6X6X10 TEE



<p>THIS DRAWING, INCLUDING THE INFORMATION IT CONTAINS, IS CONFIDENTIAL, PROPRIETARY, AND IS THE PROPERTY OF YARDNEY WATER MANAGEMENT, INC. IT IS SUBMITTED ONLY IN CONNECTION WITH THE TRANSACTION TO WHICH IT PERTAINS AND MUST NOT BE USED IN ANY OTHER MANNER DETRIMENTAL TO THE INTERESTS OF YARDNEY WATER MANAGEMENT. THE DRAWING IS NOT TO BE COPIED.</p>		<p>CUSTOMER USED ON</p>		
E	WELD TABS ON MANWAY RINGS	DTD	9-12	<p>IL 4824-5A FILTER SYSTEM</p>
D	ADDED 4" DRAIN PORT	DTD	11-09	
C	FIXED TANKS SIZE WAS 54" DIA	DTD	10-07	
B	CORRECTED GPM FLOW RATES	DTC	10-05	
A	STANDARDIZED NOTES	DTC	9-05	
ND.	REVISION	BY	DATE	<p>LOCATION: SYSTEMS\IL</p> <p>SHEET 1 OF 1</p>



IL 4824-5A
FILTER SYSTEM