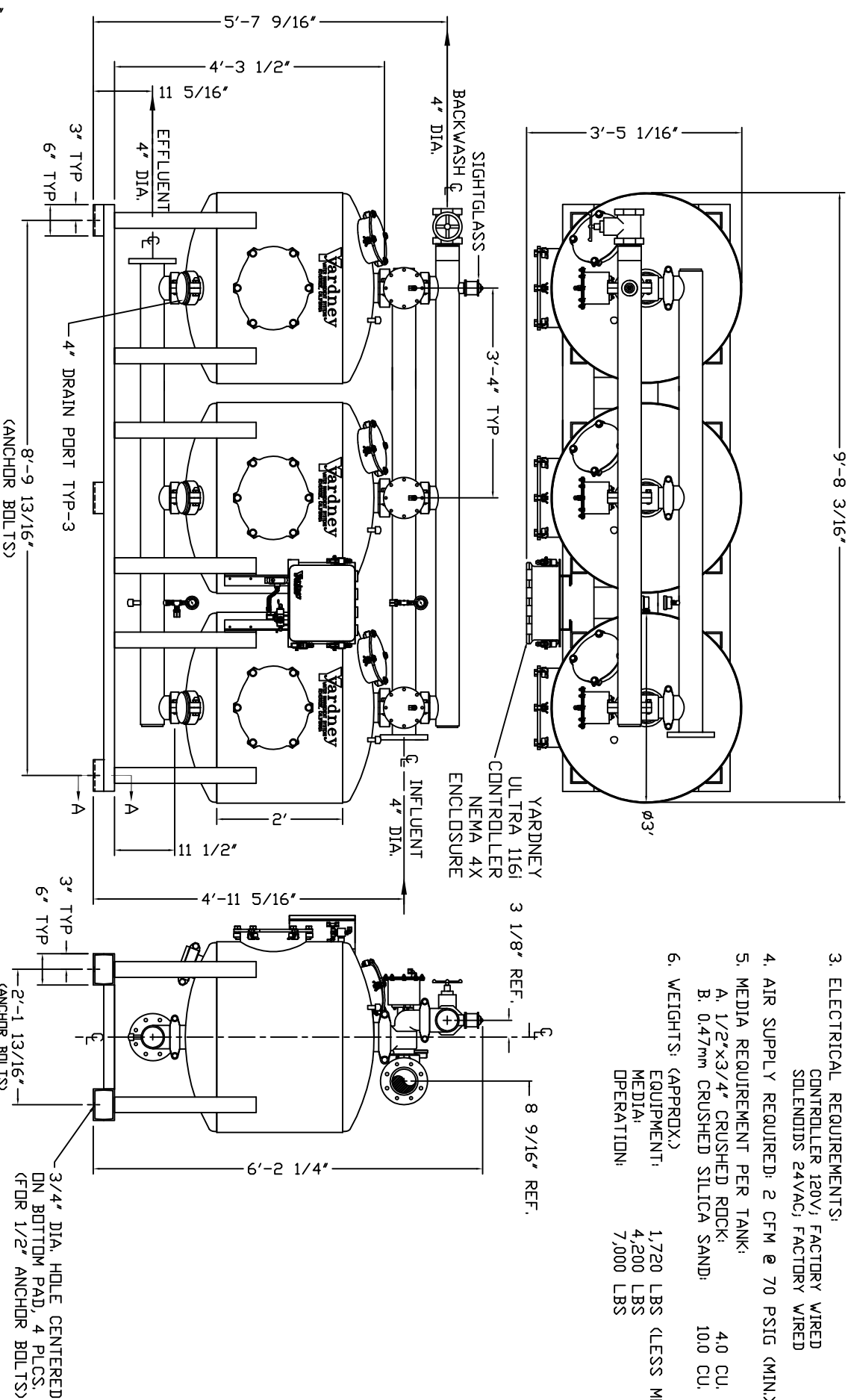


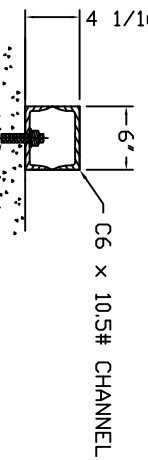
IL 3624-3A

NOTES:

1. FLOW RATE DESIGN: 213-320 GPM, BACKWASH RATE: 15 GPM/FT².
2. MAXIMUM WORKING PRESSURE: 100 PSI.
3. ELECTRICAL REQUIREMENTS:
CONTROLLER 120V; FACTORY WIRE
SOLENOIDS 24VAC; FACTORY WIRE
4. AIR SUPPLY REQUIRED: 2 CFM @ 70 PSIG (MIN).
5. MEDIA REQUIREMENT PER TANK:
A. 1/2"x3/4" CRUSHED ROCK: 40 CU. FT.
B. 0.47mm CRUSHED SILICA SAND: 10.0 CU. FT.
6. WEIGHTS: (APPROX)
EQUIPMENT: 1,720 LBS (LESS MEDIA)
MEDIA: 4,200 LBS
OPERATION: 7,000 LBS



THIS DRAWING, INCLUDING THE INFORMATION IT CONTAINS, IS CONFIDENTIAL, PROPRIETARY, AND IS THE PROPERTY OF YARNEY WATER MANAGEMENT, INC. IT IS SUBMITTED ONLY IN CONNECTION WITH THE TRANSACTION TO WHICH IT PERTAINS AND MUST NOT BE USED IN ANY OTHER MANNER, DETRIMENTAL TO THE INTERESTS OF YARNEY WATER MANAGEMENT. THE DRAWING IS NOT TO BE COPIED AND MUST BE RETURNED UPON REQUEST. COPYRIGHT YARNEY WATER MANAGEMENT SYSTEMS, 1994.



SECTION A-A
1/2" Ø ANCHOR BOLT (4 PLACES)
6" x 10.5# CHANNEL
4 1/16"

THIS DRAWING, INCLUDING THE INFORMATION IT CONTAINS, IS CONFIDENTIAL, PROPRIETARY, AND IS THE PROPERTY OF YARNEY WATER MANAGEMENT, INC. IT IS SUBMITTED ONLY IN CONNECTION WITH THE TRANSACTION TO WHICH IT PERTAINS AND MUST NOT BE USED IN ANY OTHER MANNER, DETRIMENTAL TO THE INTERESTS OF YARNEY WATER MANAGEMENT. THE DRAWING IS NOT TO BE COPIED AND MUST BE RETURNED UPON REQUEST. COPYRIGHT YARNEY WATER MANAGEMENT SYSTEMS, 1994.		CUSTOMER: USED ON:		Yarnley WATER MANAGEMENT SYSTEMS WATER REVERSE OSMOSIS CALIFORNIA	
D	WELD TABS ON MANWAY RINGS	DTD	7-12	DRAWN BY:	DTC
C	FLOW RATE WAS 320 GPM @ 80 PSI MAX WORKING PRESSURE WAS 80 PSI	DTD	10-11	DATE:	12-1-2004
B	ADDED 4" DRAIN PORT	DTD	11-09	DRAWING NO:	9500362403
A	STANDARDIZED NOTES	DTC	9-05	LOCATION:	SYSTEMS\IL
ND	REVISION	BY	DATE	REV:	D
IL 3624-3A					
SHEET 1 OF 1					