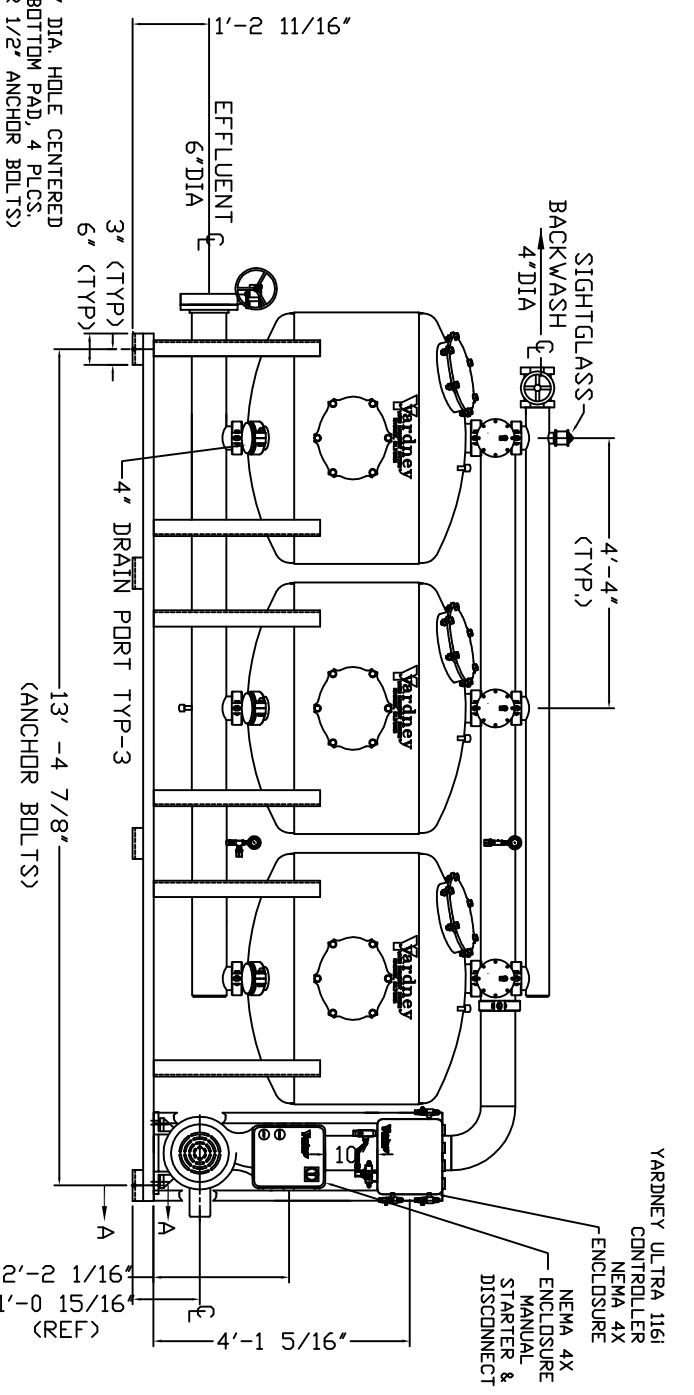
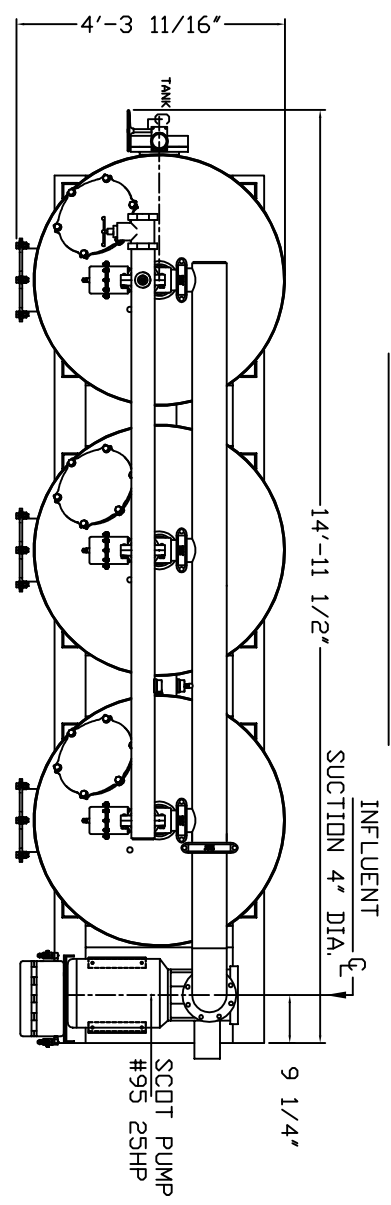
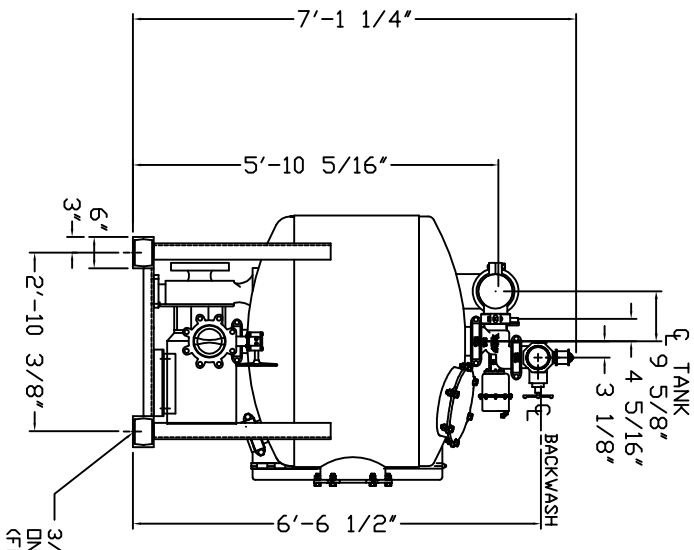
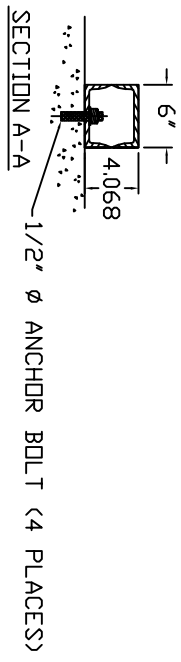


NOTES:

1. FLOW RATE DESIGN: 750 GPM @ 40 PSI
2. MAXIMUM WORKING PRESSURE: 80 PSI
3. ELECTRICAL REQUIREMENTS:
25 HP TEFC MOTOR 460V, 3 PHASE, 60 HZ
CONTROLLER 120V, FACTORY WIRED TO OPT.
SILENCERS 2AVACI, FACTORY WIRED
4. AIR SUPPLY REQUIRED: 2 CFM @ 70 PSIG (MIN).
5. MEDIA REQUIREMENT PER TANK:
A. 1/2"x3/4" CRUSHED ROCK: - 7.0 CU. FT.
B. 0.47mm CRUSHED SILICA SAND: 21.0 CU. FT.
6. WEIGHTS (APPROX.)
A. EQUIPMENT: 11,780 LBS (WITH MEDIA)
B. OPERATION: 16,000 LBS



RCW 4824-3A

NO.	DESCRIPTION	DATE	BY	CHKD.
1	DESIGN	11-09	JOB	
2	REVISED	11-09	JOB	
3	REVISED	11-09	JOB	
4	REVISED	11-09	JOB	
5	REVISED	11-09	JOB	
6	REVISED	11-09	JOB	
7	REVISED	11-09	JOB	
8	REVISED	11-09	JOB	
9	REVISED	11-09	JOB	
10	REVISED	11-09	JOB	

Yardney
WATER MANAGEMENT SYSTEMS
100 NOT SCALE DWG
RCW 4824-3A
TANK SYSTEM
9725048243 D

THIS DRAWING IS THE PROPERTY OF YARDNEY WATER MANAGEMENT SYSTEMS, INC. IT IS TO BE USED ONLY IN CONNECTION WITH THE PROJECT AND NOT BE LOANED, REPRODUCED, COPIED, OR IN ANY MANNER BEING USED FOR ANY OTHER WATER MANAGEMENT PROJECT. IT IS TO BE RETURNED TO YARDNEY WATER MANAGEMENT SYSTEMS, INC. UPON COMPLETION OF THE PROJECT. ANY REVISIONS TO THIS DRAWING MUST BE APPROVED BY YARDNEY WATER MANAGEMENT SYSTEMS, INC. IN WRITING.