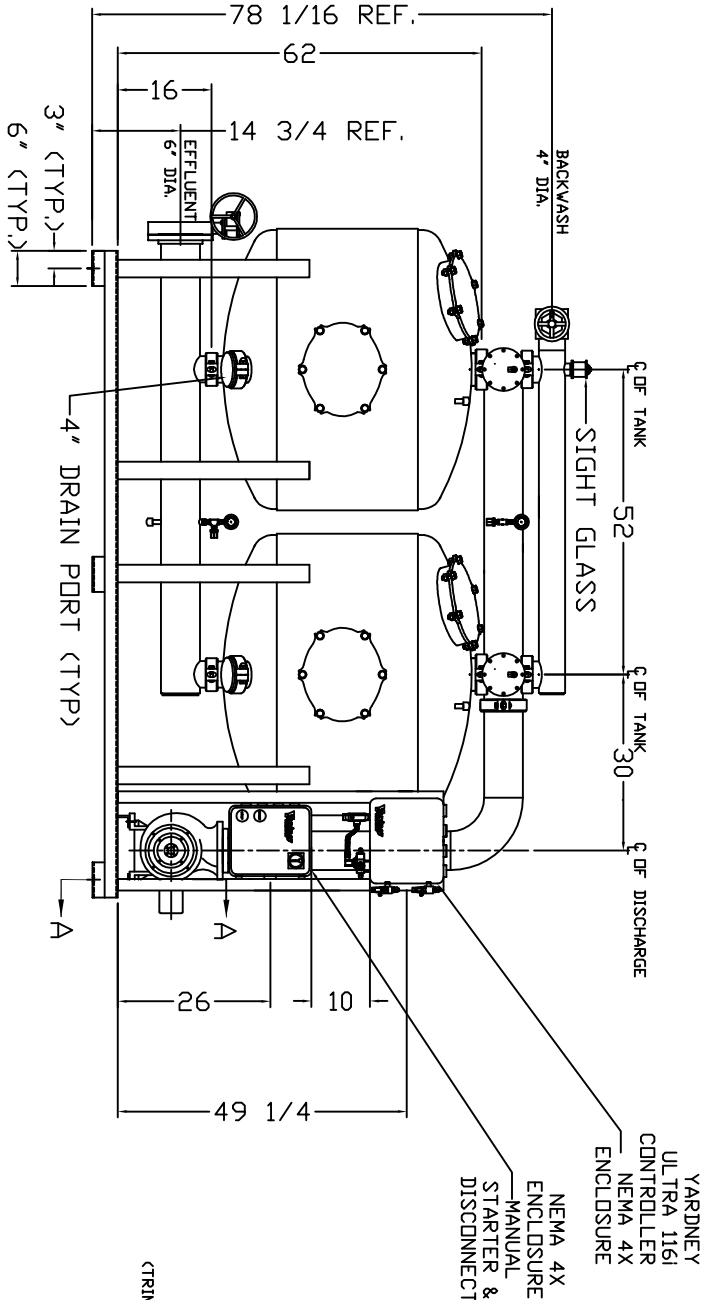
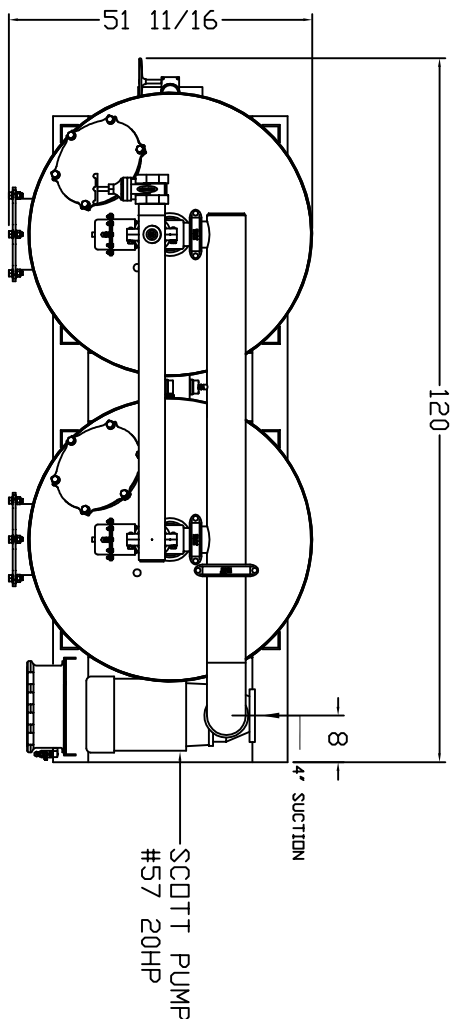
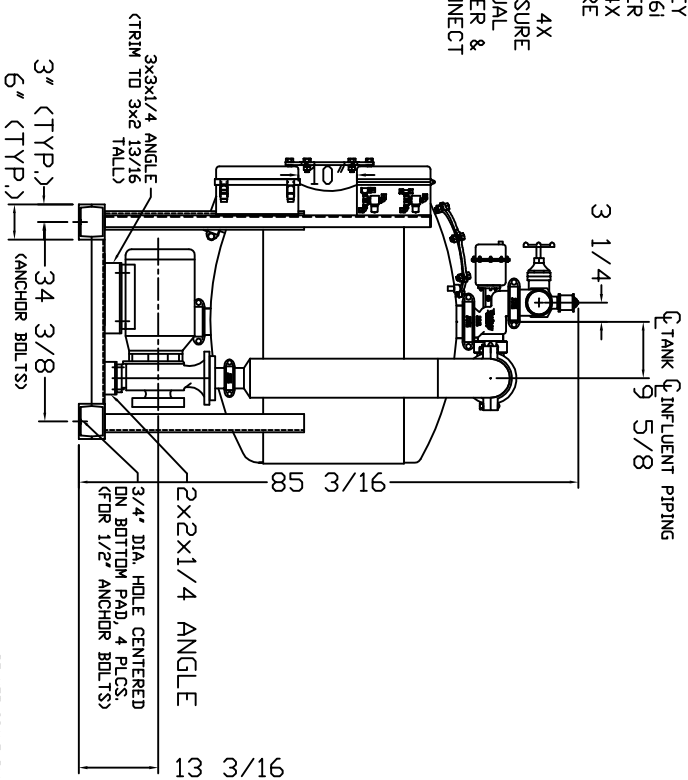
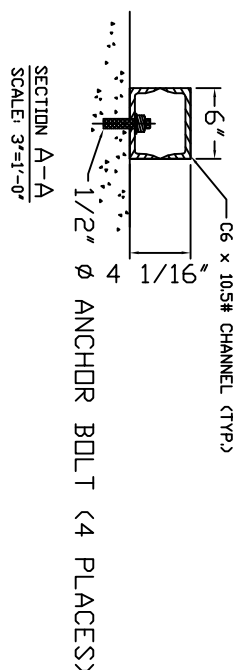


RCW 4824-2A



NOTES:

1. FLOW RATE DESIGN: 504 GPM, @ 40 PSI.
2. MAXIMUM WORKING PRESSURE: 40 PSI.
3. ELECTRICAL REQUIREMENTS:
20 HP TEFC MOTOR 480V, 3 PHASE, 60 HZ
CONTROLLER 120V, FACTORY WIRED TO GPT.
SOLENOIDS 24VAC, FACTORY WIRED
4. AIR SUPPLY REQUIRED: 2 CFM @ 70 PSIG (MIN.).
5. MEDIA REQUIREMENT PER TANK:
A. 1/2"x3/4" CRUSHED ROCK: 7.0 CU. FT.
B. 0.47mm CRUSHED SILICA SAND: 21.0 CU. FT.
6. WEIGHTS: (APPROX.)
A. EQUIPMENT: 7,780 LBS (WITH MEDIA)
B. OPERATION: 8,700 LBS



THIS DRAWING, INCLUDING THE INFORMATION IT CONTAINS, IS CONFIDENTIAL, PROPRIETARY AND IS THE PROPERTY OF YARDNEY WATER MANAGEMENT SYSTEMS. IT IS NOT TO BE REPRODUCED, COPIED, EITHER WHOLLY OR IN PART, OR TRANSMITTED BY ANY MEANS, ELECTRONIC OR MECHANICAL, INCLUDING PHOTOCOPYING, RECORDING, OR BY ANY INFORMATION STORAGE AND RETRIEVAL SYSTEM, WITHOUT THE WRITTEN PERMISSION OF YARDNEY WATER MANAGEMENT SYSTEMS, 1994. AND MUST BE RETURNED UPON REQUEST.

REV	DATE	BY	DESCRIPTION
A	01/10/01	APR	NEW STANDARD UPDATES AND STARTER & DISCONNECT
B	05/01/01	APR	STANDARDIZED NOTES
C	01/11/01	APR	ADDED 4\"/>
D	05/01/01	APR	STANDARDIZED NOTES
E	05/01/01	APR	STANDARDIZED NOTES

APPROVALS DATE	DATE	BY
YARDNEY WATER MANAGEMENT SYSTEMS	RCW 4824-2A	TANK SYSTEM
DESIGN NO.	9725048242	REV. C
PROJECT NO.	SYSTEM RCW	SHEET 1 OF 1

DO NOT SCALE DIMS.