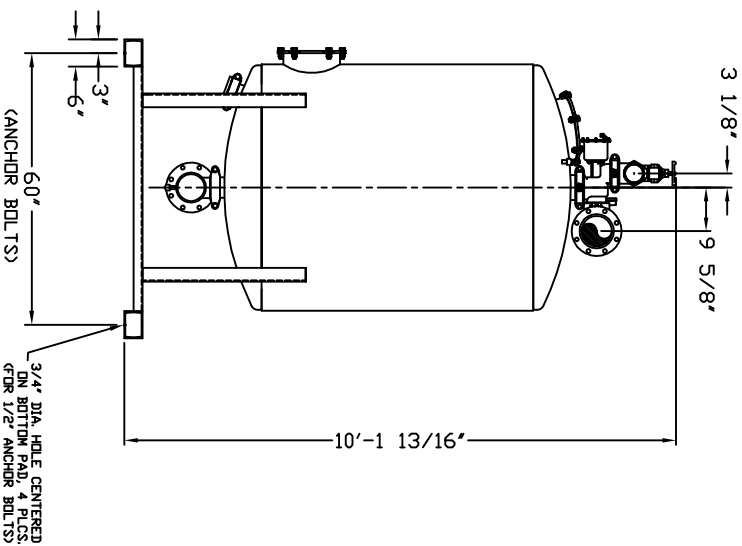
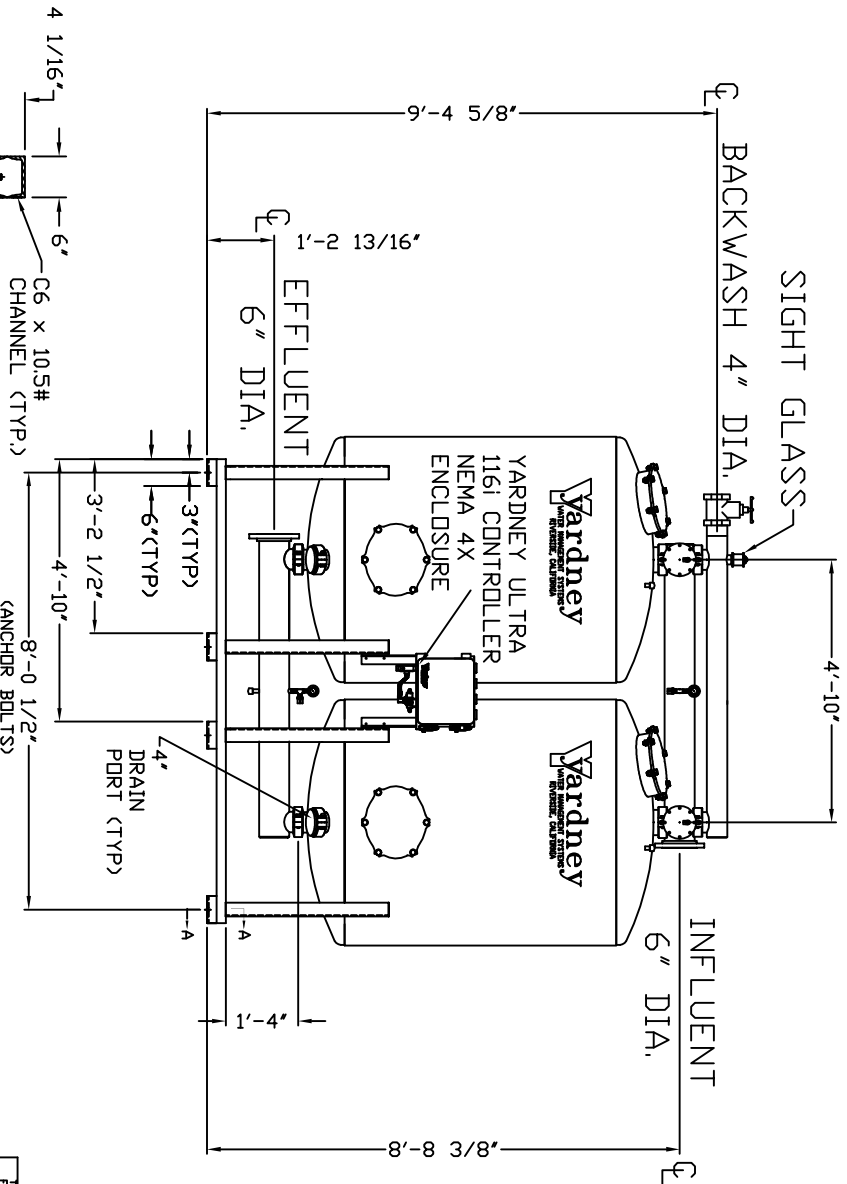
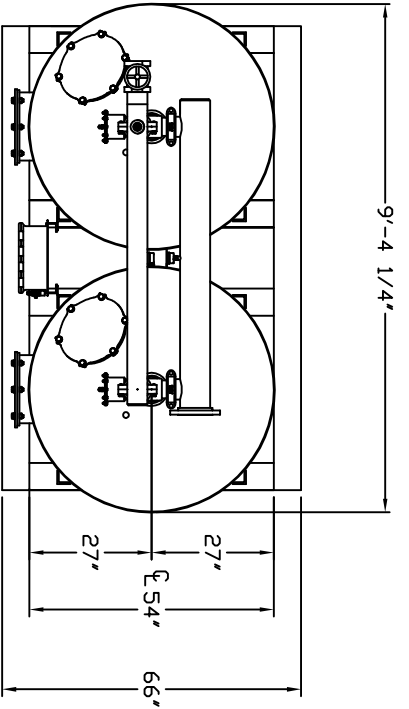


# MODEL MM 5460-2A

## NOTES:

1. FLOW RATE DESIGN: 160-477 GPM; MAX TD 636 GPM
2. MAXIMUM WORKING PRESSURE: 80 PSI.
3. ELECTRICAL REQUIREMENTS:  
CONTROLLER 120V,  
SOLENOIDS 24VAC, FACTORY WIRE
4. AIR SUPPLY REQUIRED: 2 CFM @ 70 PSIG (MIN.).
5. MEDIA REQUIREMENT PER TANK:
  - A. 1/2"x3/4" CRUSHED ROCK: 9.5 CU. FT.
  - B. 1.45mm GARNET: 8.0 CU. FT.
  - C. 0.35mm GARNET: 24.0 CU. FT.
  - D. 0.75mm ANTHRACITE: 24.0 CU. FT.
6. WEIGHTS (APPROX)  
EQUIPMENT: 2,710 LBS (LESS MEDIA)  
MEDIA: 12,746 LBS  
OPERATION: 22,850 LBS

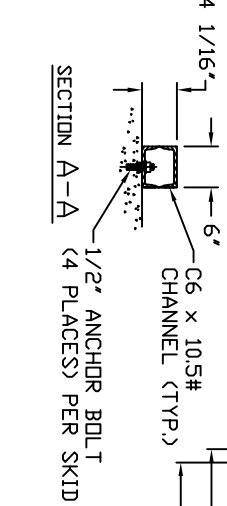


DO NOT SCALE DIMS



MODEL MM 5460-2A

REV	DATE	BY	DESCRIPTION
E			STANDARDIZED NOTES
D			CONNECTED GPM FLOW RATES
C			REVISED SCD TO STANDARD
B			ADDED 4" DRAIN PORT
A			ADDED SIGHTGLASS



SECTION A-A  
(4 PLACES) PER SKID