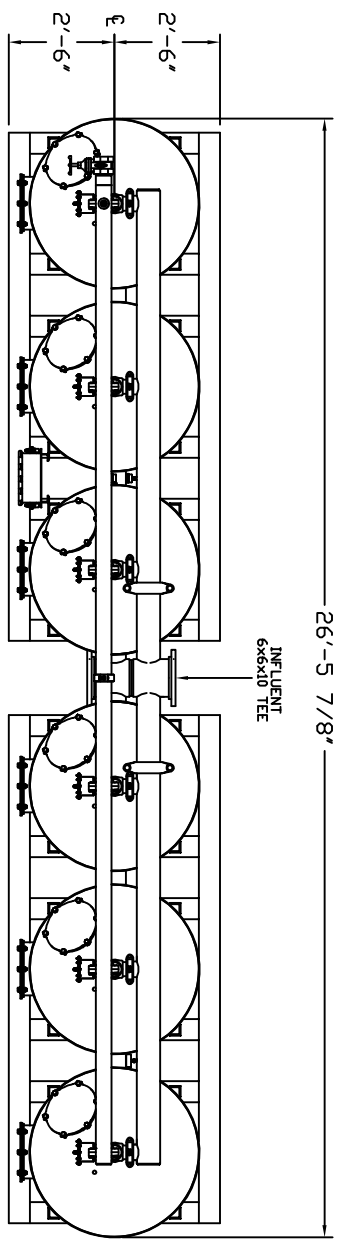
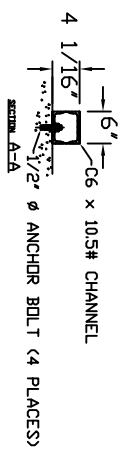
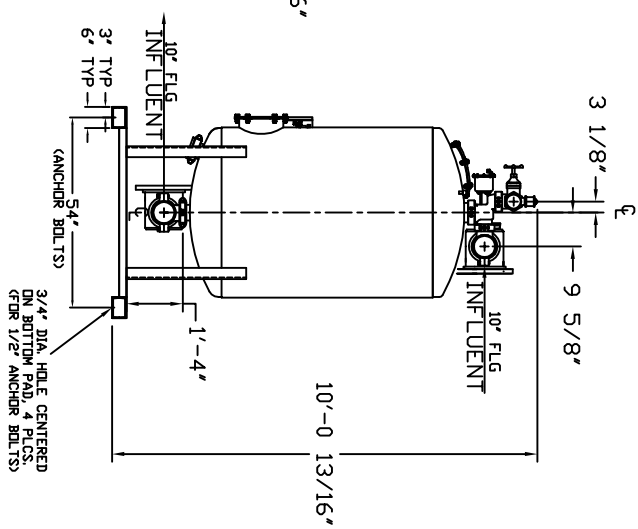
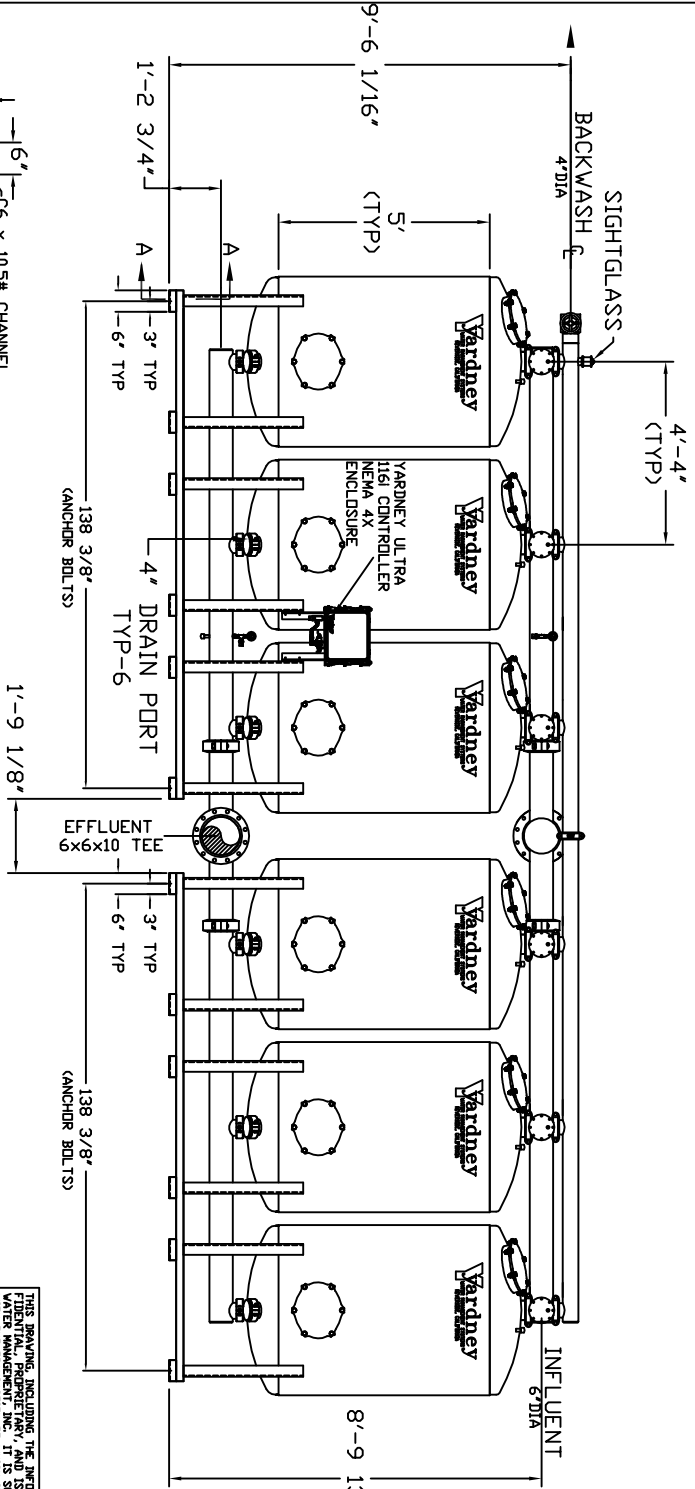


# MM 4860-6A



- NOTES:
1. FLOW RATE DESIGN: 78-1134 GPM; MAX TO 1,512 GPM  
BACKWASH RATE: 15 GPM/FT<sup>2</sup>.
  2. MAXIMUM WORKING PRESSURE: 80 PSI.
  3. ELECTRICAL REQUIREMENTS:  
CONTROLLER 120V,  
SOLENOIDS 24VAC; FACTORY WIRED
  4. AIR SUPPLY REQUIRED: 2 CFM @ 70 PSIG (MIN.).
  5. MEDIA REQUIREMENT PER TANK:  
A. 1/2" x 3/4" CRUSHED ROCK: 70 CU. FT.  
B. 1.5mm GARNET: 65 CU. FT.  
C. 0.35mm GARNET: 190 CU. FT.  
D. 0.75mm ANTHRACITE: 190 CU. FT.
  6. WEIGHTS (APPROX.)  
EQUIPMENT: 7,200 LBS (LESS MEDIA)  
MEDIA: 30,100 LBS  
OPERATION: 54,600 LBS



THIS DRAWING, INCLUDING THE INFORMATION IT CONTAINS, IS CONFIDENTIAL, PROPRIETARY, AND IS THE PROPERTY OF YARDNEY WATER MANAGEMENT, INC. IT IS SUBMITTED ONLY IN CONNECTION WITH THE PROPOSED PROJECT AND IS NOT TO BE REPRODUCED, COPIED, OR USED IN ANY OTHER MANNER DETRIMENTAL TO THE INTERESTS OF YARDNEY WATER MANAGEMENT. THE DRAWING IS NOT TO BE CORRECTED OR AMENDED.		DATE: 11-09 DRAWN BY: KAT CHECKED BY: KAT	
C	CORRECTED GPM FLOW RATES	DTC	1-14-97
B	STANDARDIZED NOTES	DTC	9-05
A	TANKS SKID ETC. NTS WAS Ø54"	DTC	6-05
NO.	REVISION	BY	DATE
LOCATION: SYSTEMS/MN		PROJECT: MM 4860-6A SYSTEM: FILTER SYSTEM	
REVISION: D		DRAWING NO: 9500486006	
SHEET 1 OF 1		YARDNEY WATER MANAGEMENT SYSTEMS	