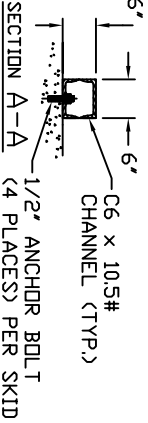
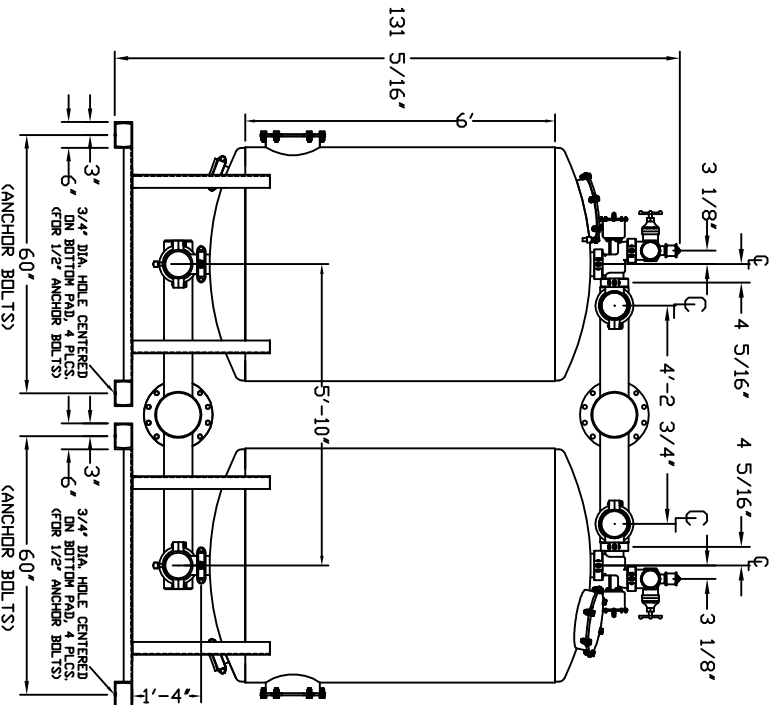
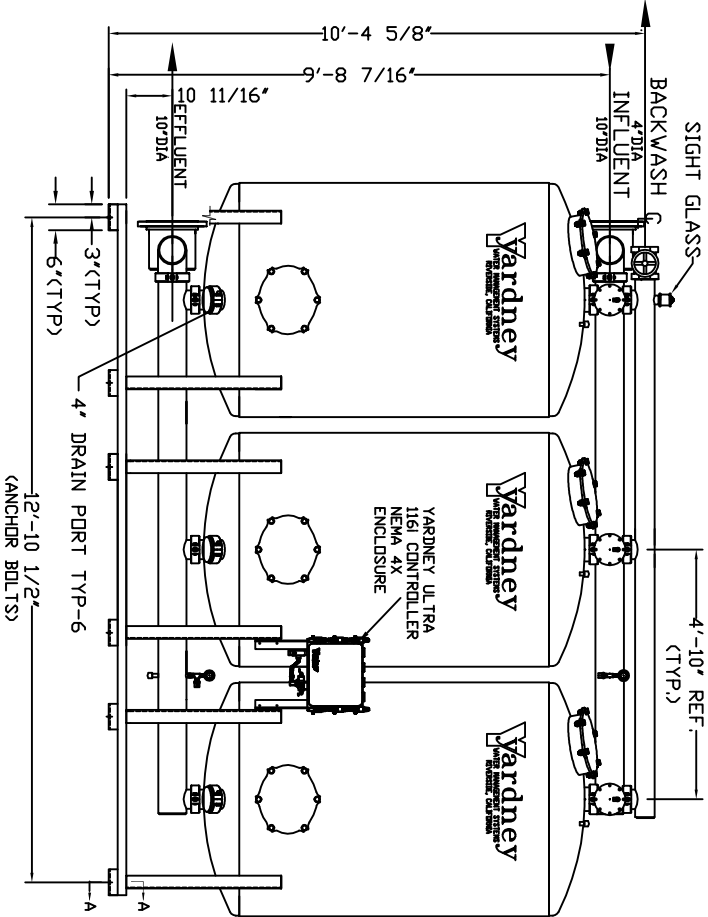
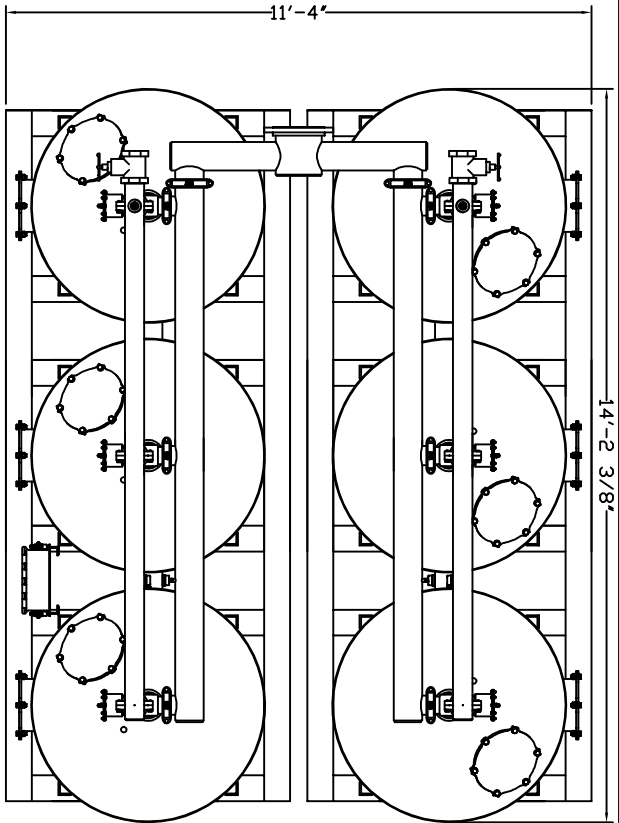


# GAC 5472-6A

## NOTES:

1. FLOW RATE DESIGN: 480-960 GPM, MAX TD 1800 GPM.
2. MAXIMUM WORKING PRESSURE: 80 PSI.
3. ELECTRICAL REQUIREMENTS:  
CONTROLLER 120V;  
SOLENOIDS 24VAC; FACTORY WIRE  
AIR SUPPLY REQUIRED: 2 CFM @ 70 PSIG (MIN).
5. MEDIA REQUIREMENT PER TANK:  
A. 1/2"x3/4" CRUSHED ROCK: 9.5 CU. FT.  
B. GRANULAR ACTIVATED CARBON: 63.5 CU. FT.
6. WEIGHTS: (APPROX.)  
EQUIPMENT: 8,690 LBS (LESS MEDIA)  
MEDIA: 16,479 LBS  
OPERATION: 50,200 LBS



<p>THIS DRAWING, INCLUDING THE INFORMATION IT CONTAINS, IS CONFIDENTIAL AND NOT TO BE REPRODUCED OR TRANSMITTED IN ANY MANNER WITHOUT THE WRITTEN PERMISSION OF YARDNEY WATER MANAGEMENT SYSTEMS, INC. IT IS SUBMITTED ONLY IN CONNECTION WITH THE TRANSACTION TO WHICH IT PERTAINS AND MUST NOT BE USED IN ANY OTHER MANNER. PERMISSION TO THE INTERESTS OF THE USER OF THIS DRAWING IS LIMITED TO THE PROJECT AND MUST BE RETURNED UPON REQUEST. COPYRIGHT YARDNEY WATER MANAGEMENT SYSTEMS, 1993</p>		<p>APPROVALS DATE DESIGNER: JTD 11-09 CHECKER: JH APPROVED: JH</p>		<p>Yardney WATER MANAGEMENT SYSTEMS REVERSE OSMOSIS</p>	
<p>ADDED 4\"/&gt; </p>		<p>DATE: 11-09 APP: JTD ISSN: 08</p>		<p>SIZE: DRAWING NO: U-PATTERN SIDE BY SIDE</p>	
<p>REV A</p>		<p>DATE: 11-09 APP: JTD ISSN: 08</p>		<p>REV A</p>	