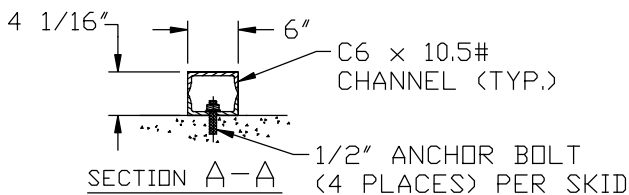
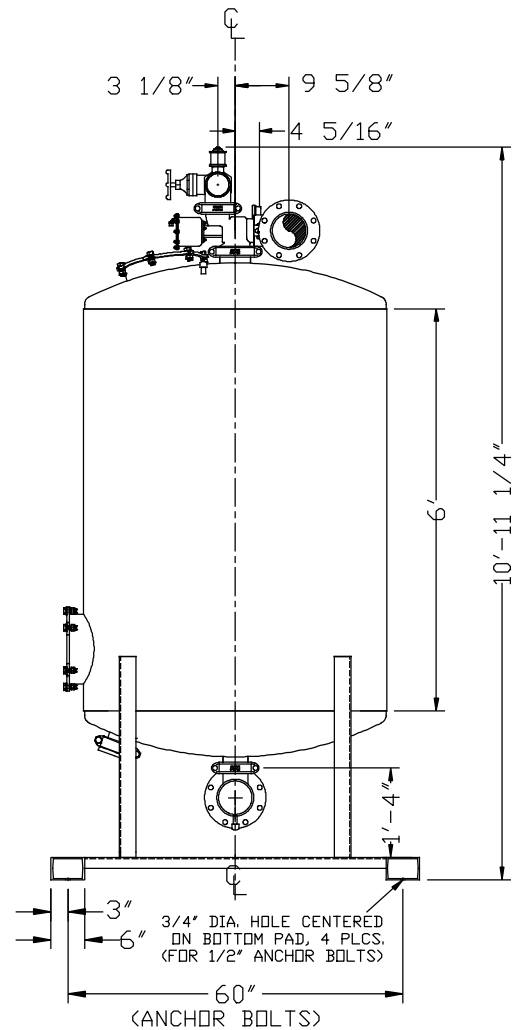
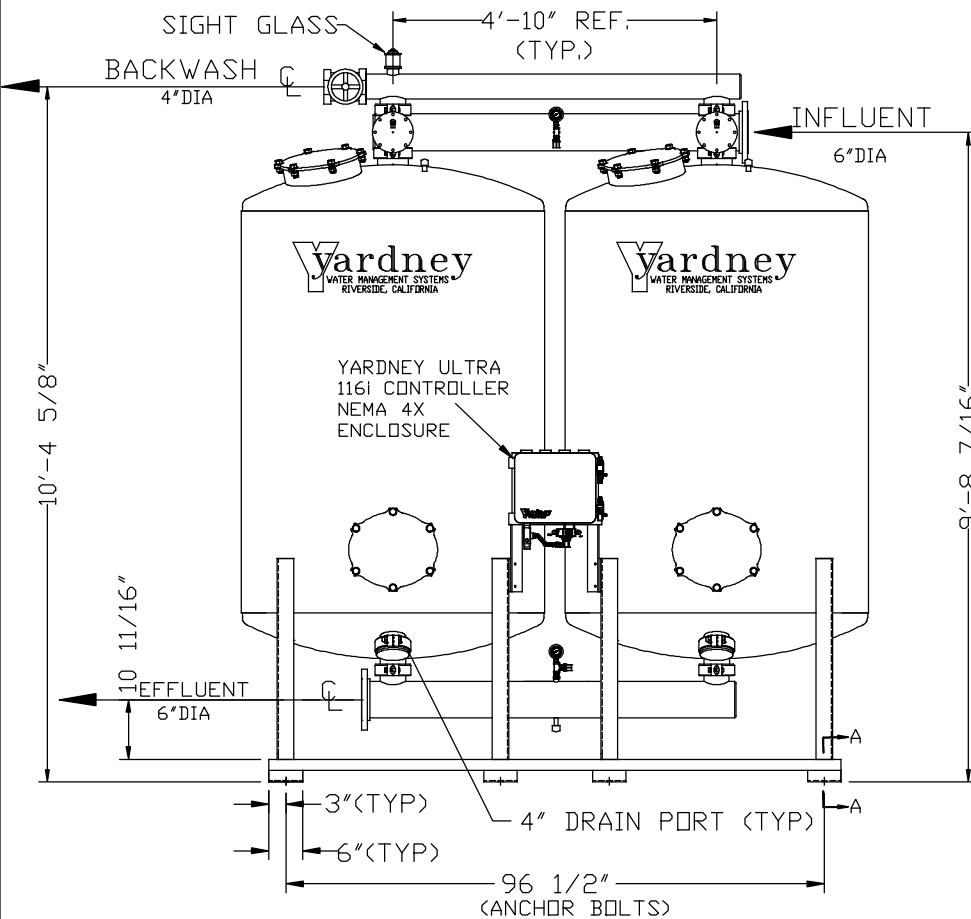
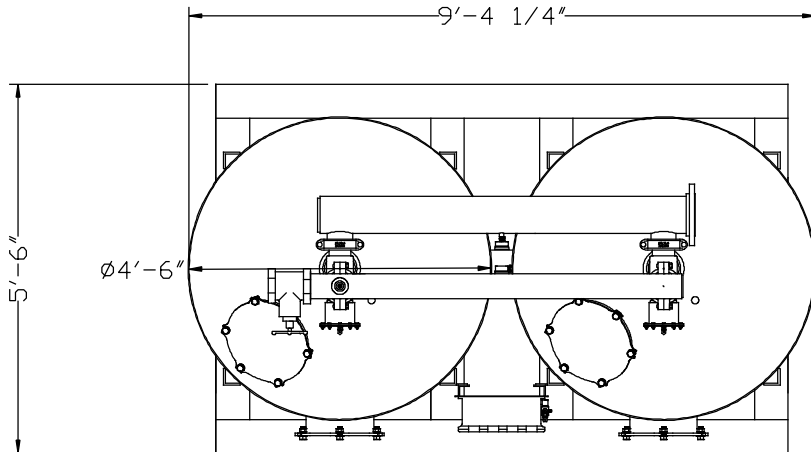


GAC 5472-2A

NOTES:

1. FLOW RATE DESIGN: 160-320 GPM.
BACKWASH RATE: 10 GPM/FT².
2. MAXIMUM WORKING PRESSURE: 80 PSI.
3. ELECTRICAL REQUIREMENTS:
CONTROLLER 120V;
SOLENOIDS 24VAC; FACTORY WIRED
4. AIR SUPPLY REQUIRED: 2 CFM @ 70 PSIG (MIN.).
5. MEDIA REQUIREMENT PER TANK:
A. 1/2"x3/4" CRUSHED ROCK: 9.5 CU. FT. ,
B. GRANULAR ACTIVATED CARBON: 63.5 CU. FT. .
6. WEIGHTS: (APPROX.)
EQUIPMENT: 2,900 LBS (LESS MEDIA)
MEDIA: 5,633 LBS
OPERATION: 16,750 LBS



THIS DRAWING, INCLUDING THE INFORMATION IT CONTAINS, IS CONFIDENTIAL, PROPRIETARY, AND IS THE PROPERTY OF YARDNEY WATER MANAGEMENT, INC. IT IS SUBMITTED ONLY IN CONNECTION WITH THE TRANSACTION TO WHICH IT PERTAINS AND MUST NOT BE USED IN ANY OTHER MANNER DETRIMENTAL TO THE INTERESTS OF YARDNEY WATER MANAGEMENT. THE DRAWING IS NOT TO BE COPIED AND MUST BE RETURNED UPON REQUEST. COPYRIGHT YARDNEY WATER MANAGEMENT SYSTEMS, 1994.

REV	DESCRIPTION	DATE	APP
E	ADDED 4" DRAIN PORT	DTD 11-09	APP
D	FIXED 454 VALVE & ADDED SIGHTGLASS	DTD 10-07	APP
C	STANDARD SKID DESIGN	DTC 2-07	APP
B	CORRECTED GPM FLOW RATES	DTC 10-05	APP
A	STANDARDIZED NOTES	DTC 9-05	APP
SYM	REVISIONS	BY DATE APP	USED IN

		DO NOT SCALE DWG.	
		GAC 5472-2A FILTER SYSTEM	
APPROVALS	DATE	SIZE	DRAWING NO.
DTD 11-09 APP	3/28/98	D	9500547202
DTD 10-07 APP			
DTC 2-07 APP			
DTC 10-05 APP			
DTC 9-05 APP			
BY	DATE	APP	USED IN
JOB NO. SYSTEM\GAC		SHEET 1 OF 1	