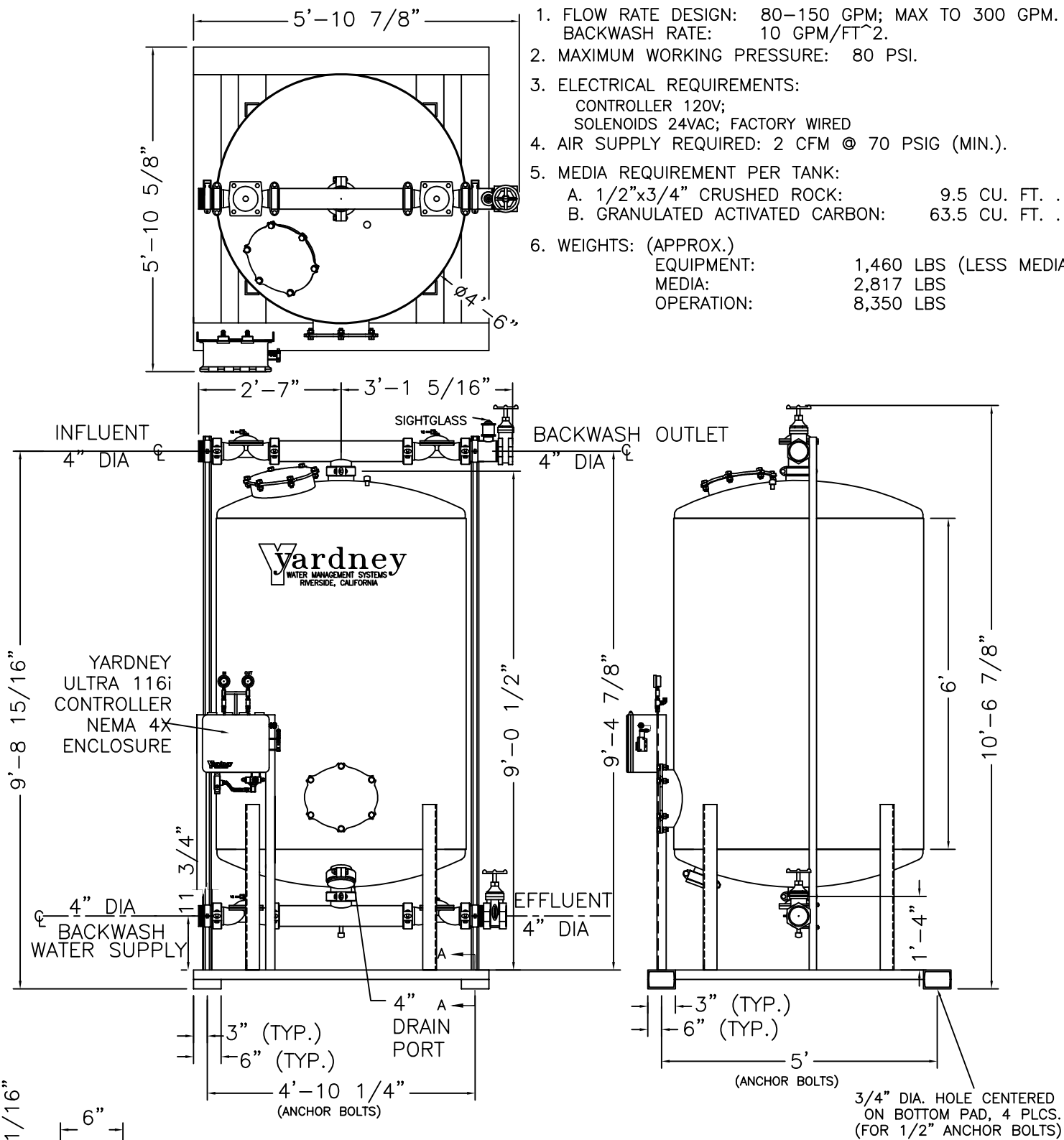


GAC 5472-1A

NOTES:

1. FLOW RATE DESIGN: 80-150 GPM; MAX TO 300 GPM.
BACKWASH RATE: 10 GPM/FT².
2. MAXIMUM WORKING PRESSURE: 80 PSI.
3. ELECTRICAL REQUIREMENTS:
CONTROLLER 120V;
SOLENOIDS 24VAC; FACTORY WIRED
4. AIR SUPPLY REQUIRED: 2 CFM @ 70 PSIG (MIN.).
5. MEDIA REQUIREMENT PER TANK:
A. 1/2"x3/4" CRUSHED ROCK: 9.5 CU. FT. .
B. GRANULATED ACTIVATED CARBON: 63.5 CU. FT. .
6. WEIGHTS: (APPROX.)
EQUIPMENT: 1,460 LBS (LESS MEDIA)
MEDIA: 2,817 LBS
OPERATION: 8,350 LBS



DO NOT SCALE DWG.

THIS DRAWING, INCLUDING THE INFORMATION IT CONTAINS, IS CONFIDENTIAL, PROPRIETARY AND IS THE PROPERTY OF YARDNEY WATER MANAGEMENT, INC. IT IS SUBMITTED ONLY IN CONNECTION WITH THE TRANSACTION TO WHICH IT PERTAINS AND MUST NOT BE USED IN ANY OTHER MANNER DETRIMENTAL TO THE INTERESTS OF YARDNEY WATER MANAGEMENT. THE DRAWING IS NOT TO BE COPIED AND MUST BE RETURNED UPON REQUEST. COPYRIGHT YARDNEY WATER MANAGEMENT SYSTEMS, 1993

Yardney
WATER MANAGEMENT SYSTEMS
RIVERSIDE, CALIFORNIA

APPROVALS		DATE	DRAWING NO.		REV.
E	ADDED 4" DRAIN PORT	11-09	APP	MM 5472-1A FILTER SYSTEM	E
D	ADDED SIGHTGLASS	10-07	APP		
C	CORRECTED GPM FLOW RATES	10-05	APP		
B	STANDARDIZED NOTES	9-05	APP		
A	DOROT VALVE LENGTH INCORRECT WAS 11 1/4"	1-05	APP		
SYM	REVISIONS	BY	DATE	APP	

9500547201

SCALE: NONE DWS DMR SYSTEM \ GAC SHEET 1 OF 1