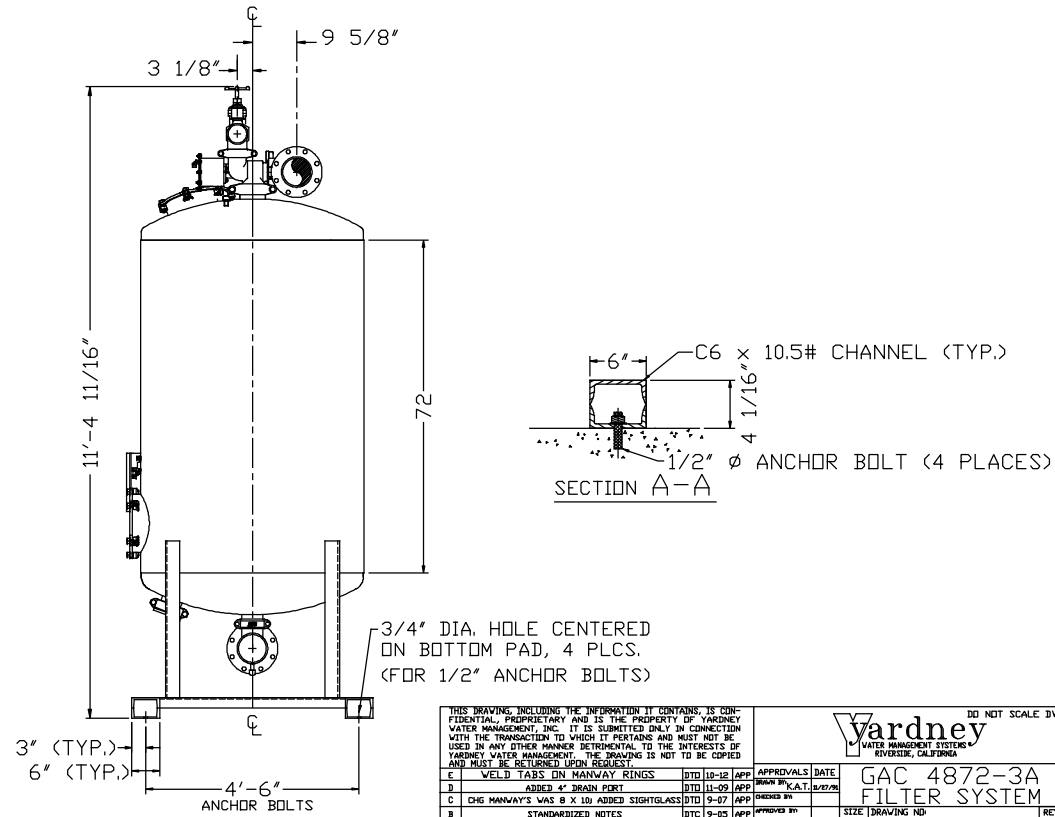
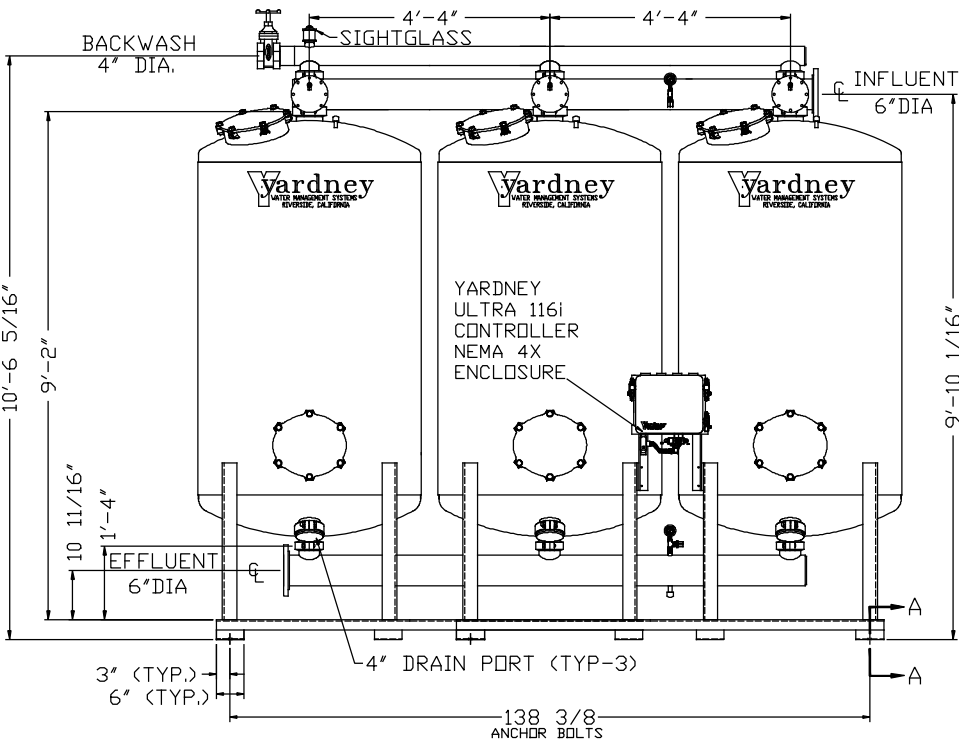
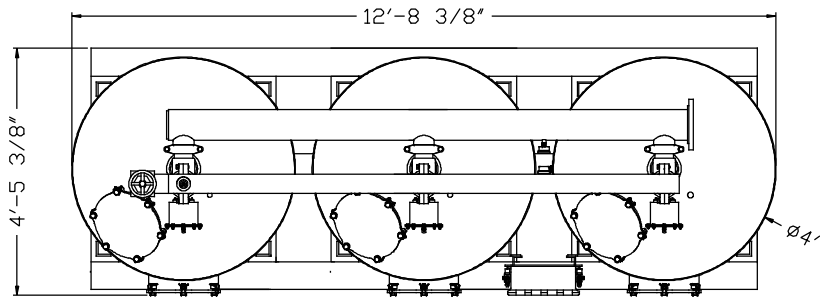


GAC 4872-3A

NOTES:

1. FLOW RATE DESIGN: 189-378 GPM.
BACKWASH RATE: 10 GPM/FT².
2. MAXIMUM WORKING PRESSURE: 80 PSI.
3. ELECTRICAL REQUIREMENTS:
CONTROLLER 120V;
SOLENOIDS 24VAC; FACTORY WIRED
4. AIR SUPPLY REQUIRED: 2 CFM @ 70 PSIG (MIN.).
5. MEDIA REQUIREMENT PER TANK:
A. 1/2"x3/4" CRUSHED ROCK: 7.0 CU. FT. .
B. GRANULAR ACTIVATED CARBON: 50.0 CU. FT. .
6. WEIGHTS: (APPROX.)
EQUIPMENT: 3,780 LBS (LESS MEDIA)
MEDIA: 6,450 LBS
OPERATION: 20,150 LBS



THIS DRAWING, INCLUDING THE INFORMATION IT CONTAINS, IS CONFIDENTIAL, PROPRIETARY AND IS THE PROPERTY OF YARDNEY WATER MANAGEMENT, INC. IT IS SUBMITTED ONLY IN CONNECTION WITH THE TRANSACTION TO WHICH IT PERTAINS AND MUST NOT BE USED IN ANY OTHER MANNER DETRIMENTAL TO THE INTERESTS OF YARDNEY WATER MANAGEMENT. THE DRAWING IS NOT TO BE COPIED AND MUST BE RETURNED UPON REQUEST.

REV	DESCRIPTION	DATE	APP	APPROVALS	DATE
E	WELD TABS ON MANWAY RINGS	10-18	APP		
D	ADDED 4\"/>				

SYN	REVISIONS	BY	DATE	APP
-----	-----------	----	------	-----

PROJECT	DATE	SCALE	SHEET
SYSTM/GAC			1 OF 1