

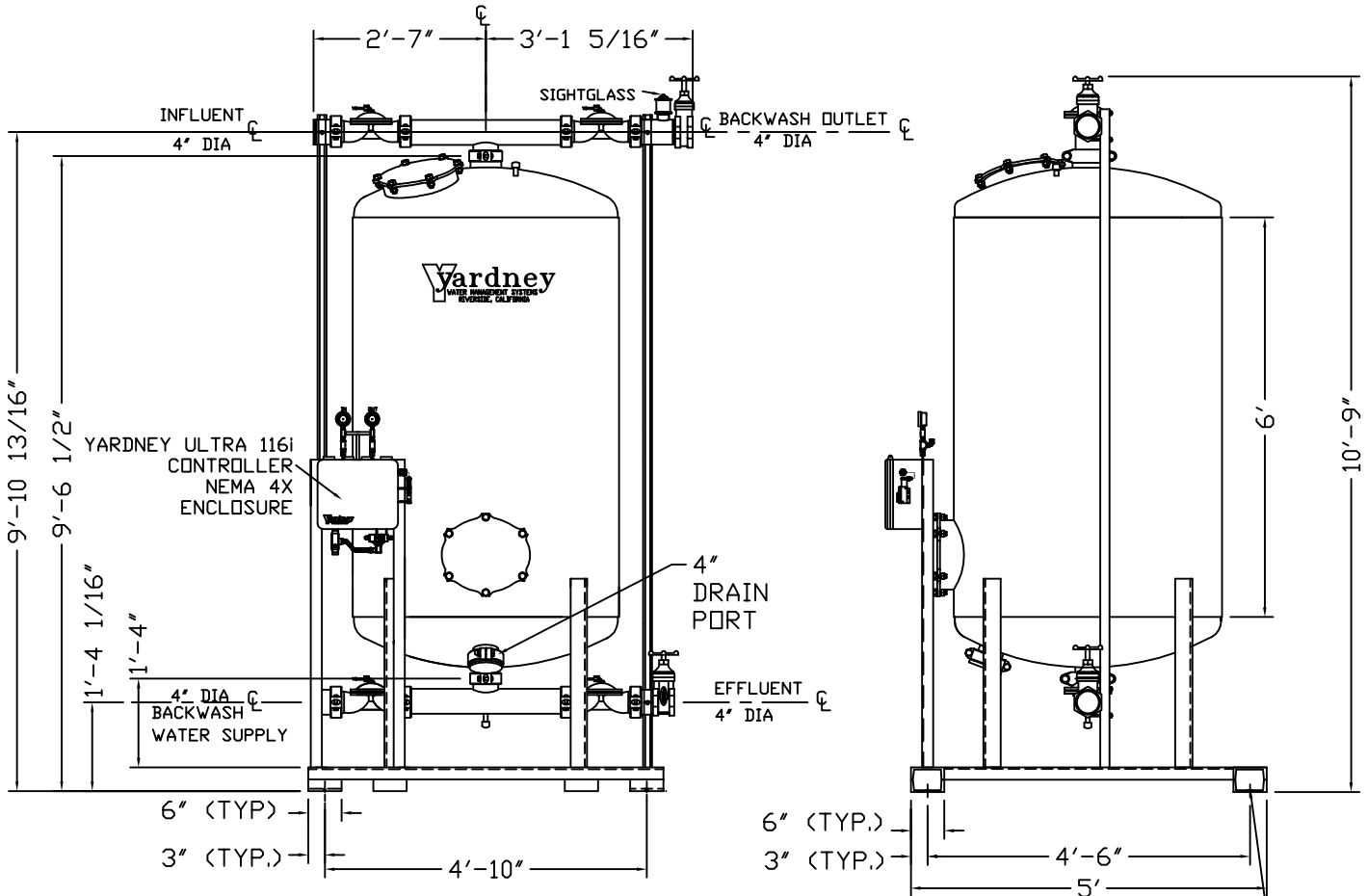
# GAC 4872-1A

## NOTES:

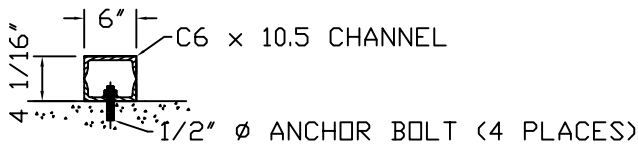
1. FLOW RATE DESIGN: 63-126 GPM; MAX TO 240 GPM.  
BACKWASH RATE: 10 GPM/FT<sup>2</sup>.
2. MAXIMUM WORKING PRESSURE: 80 PSI.
3. ELECTRICAL REQUIREMENTS:  
CONTROLLER 120V;  
SOLENOIDS 24VAC; FACTORY WIRED
4. AIR SUPPLY REQUIRED: 2 CFM @ 70 PSIG (MIN.).
5. MEDIA REQUIREMENT PER TANK:
 

A. 1/2"x3/4" CRUSHED ROCK:	7.0 CU. FT. .
B. GRANULATED ACTIVATED CARBON:	50.0 CU. FT. .
6. WEIGHTS: (APPROX.)
 

EQUIPMENT:	1,260 LBS (LESS MEDIA)
MEDIA:	2,200 LBS
OPERATION:	6,700 LBS



3/4" DIA. HOLE CENTERED ON BOTTOM PAD, 4 PLCS.  
(FOR 1/2" ANCHOR BOLTS)



SECTION A-A

THIS DRAWING, INCLUDING THE INFORMATION IT CONTAINS, IS CONFIDENTIAL, PROPRIETARY AND IS THE PROPERTY OF YARNEY WATER MANAGEMENT, INC. IT IS SUBMITTED ONLY IN CONNECTION WITH THE TRANSACTION TO WHICH IT PERTAINS AND MUST NOT BE USED IN ANY OTHER MANNER DETRIMENTAL TO THE INTERESTS OF YARNEY WATER MANAGEMENT. THE DRAWING IS NOT TO BE COPIED AND MUST BE RETURNED UPON REQUEST. COPYRIGHT YARNEY WATER MANAGEMENT SYSTEMS, 1993

SYMBOL	DESCRIPTION	DATE	APP
D	ADDED 4" DRAIN PORT	DTC 11-09	APP
C	CORRECTED GPM FLOW RATES	DTC 10-05	APP
B	STANDARDIZED NOTES	DTC 9-05	APP
A	TANK DIAMETER INCORRECT WAS 47 9/16	DTC 1-05	APP
SYM	REVISIONS	BY	DATE APP

DO NOT SCALE DWG.

**GAC 4872-1A**  
FILTER SYSTEM

APPROVALS	DATE	SIZE	DRAWING NO.	REV
DRAWN BY: JMW	6/19/08		9500487201	D
CHECKED BY:		SCALE:	ARCHITECTURAL SCALE	
APPROVED BY:		SCALE:	1/8" = 1'-0"	
SYMBOLS			FILE: \\SYSTEM\GAC\	SHEET 1 OF 1