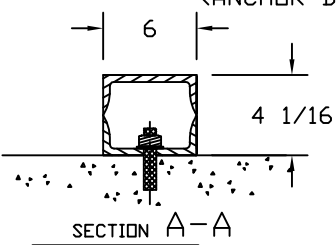
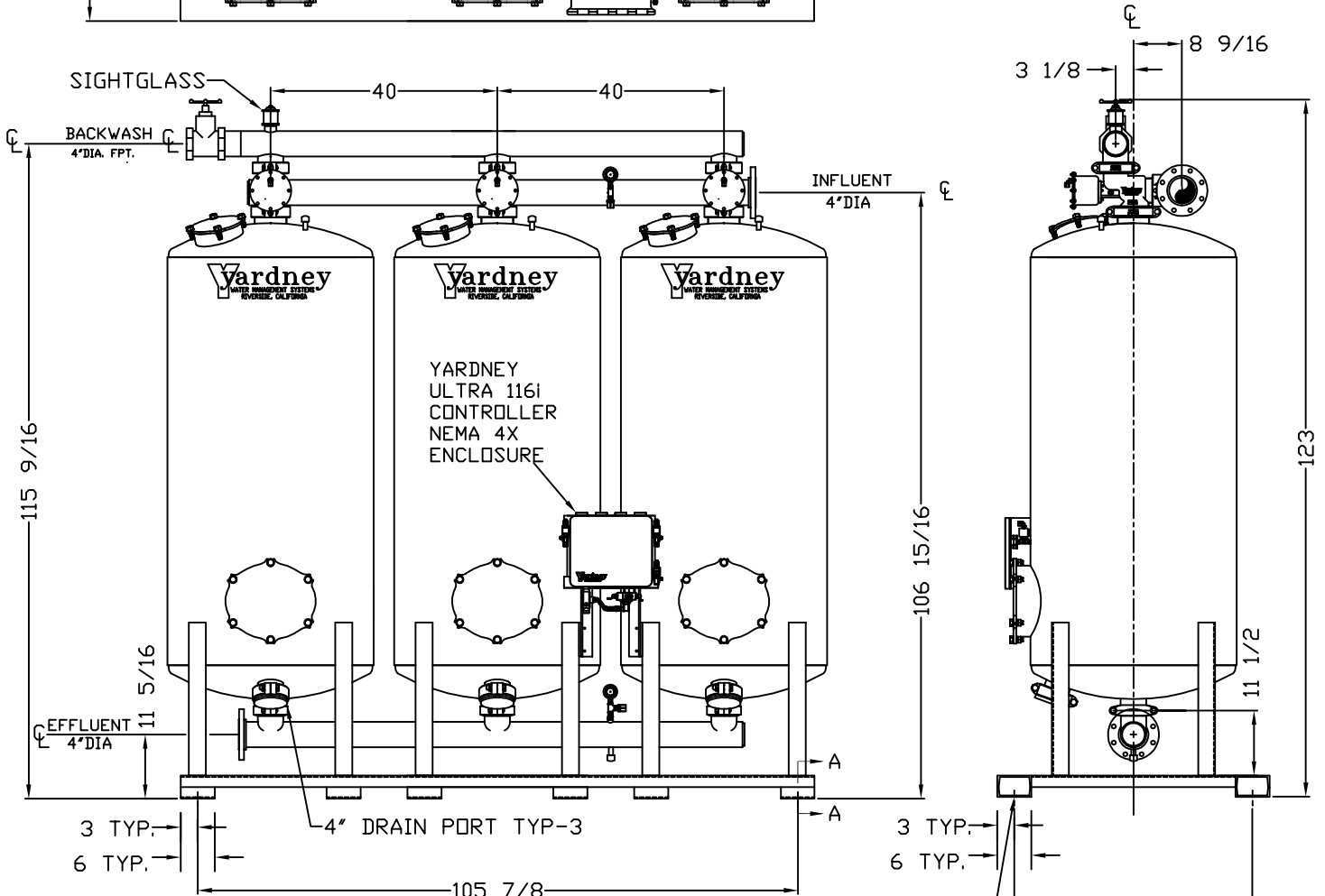
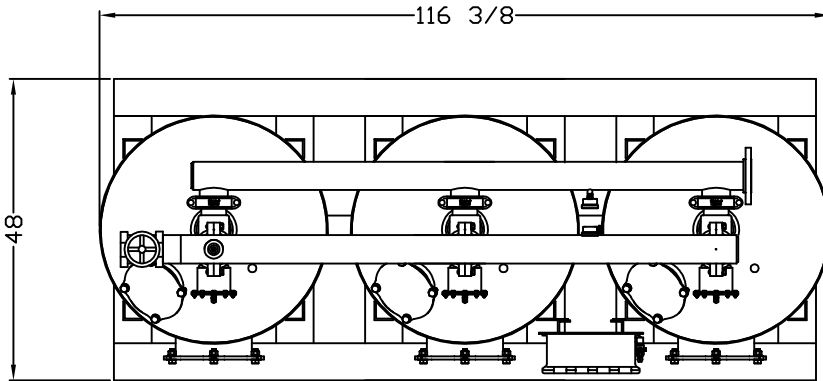


# GAC 3672-3A

**NOTES:**

1. FLOW RATE DESIGN: 105-320 GPM; MAX TO 426 GPM.
2. MAXIMUM WORKING PRESSURE: 100 PSI.
3. ELECTRICAL REQUIREMENTS:  
CONTROLLER 120V;  
SOLENOIDS 24VAC; FACTORY WIRED
4. AIR SUPPLY REQUIRED: 2 CFM @ 70 PSIG (MIN.).
5. MEDIA REQUIREMENT PER TANK:  
A. 1/2"x3/4" CRUSHED ROCK: 4.0 CU. FT. .  
B. GRANULAR ACTIATED CARBON: 28.0 CU. FT. .
6. WEIGHTS: (APPROX.)  
EQUIPMENT: 2,640 LBS (LESS MEDIA)  
MEDIA: 3,636 LBS  
OPERATION: 11,300 LBS



3/4" DIA. HOLE CENTERED ON BOTTOM PAD, 4 PLCS. (FOR 1/2" ANCHOR BOLTS)

THIS DRAWING, INCLUDING THE INFORMATION IT CONTAINS, IS CONFIDENTIAL, PROPRIETARY AND IS THE PROPERTY OF YARDNEY WATER MANAGEMENT, INC. IT IS SUBMITTED ONLY IN CONNECTION WITH THE TRANSACTION TO WHICH IT PERTAINS AND MUST NOT BE USED IN ANY OTHER MANNER DETRIMENTAL TO THE INTERESTS OF YARDNEY WATER MANAGEMENT. THE DRAWING IS NOT TO BE COPIED AND MUST BE RETURNED UPON REQUEST. COPYRIGHT YARDNEY WATER MANAGEMENT SYSTEMS, 1994				<b>Yardney</b> WATER MANAGEMENT SYSTEMS RIVERSIDE, CALIFORNIA		
APPROVALS		DATE	<b>GAC 3672-3A</b> <b>FILTER SYSTEM</b>			
DESIGNED BY	DTD	11-18-97				
APPROVED BY			SIZE	DRAWING NO.	REV.	
A	ADDED 4" DRAIN PORT	DTD 11-09	APP	D	9500367203	A
SYN	REVISIONS	BY	DATE	APP	SCALE 1/8" = 1'-0"	SHEET 1 OF 1