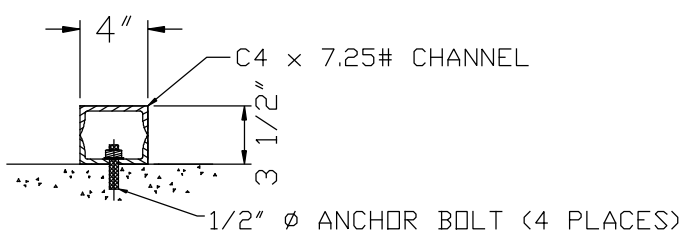
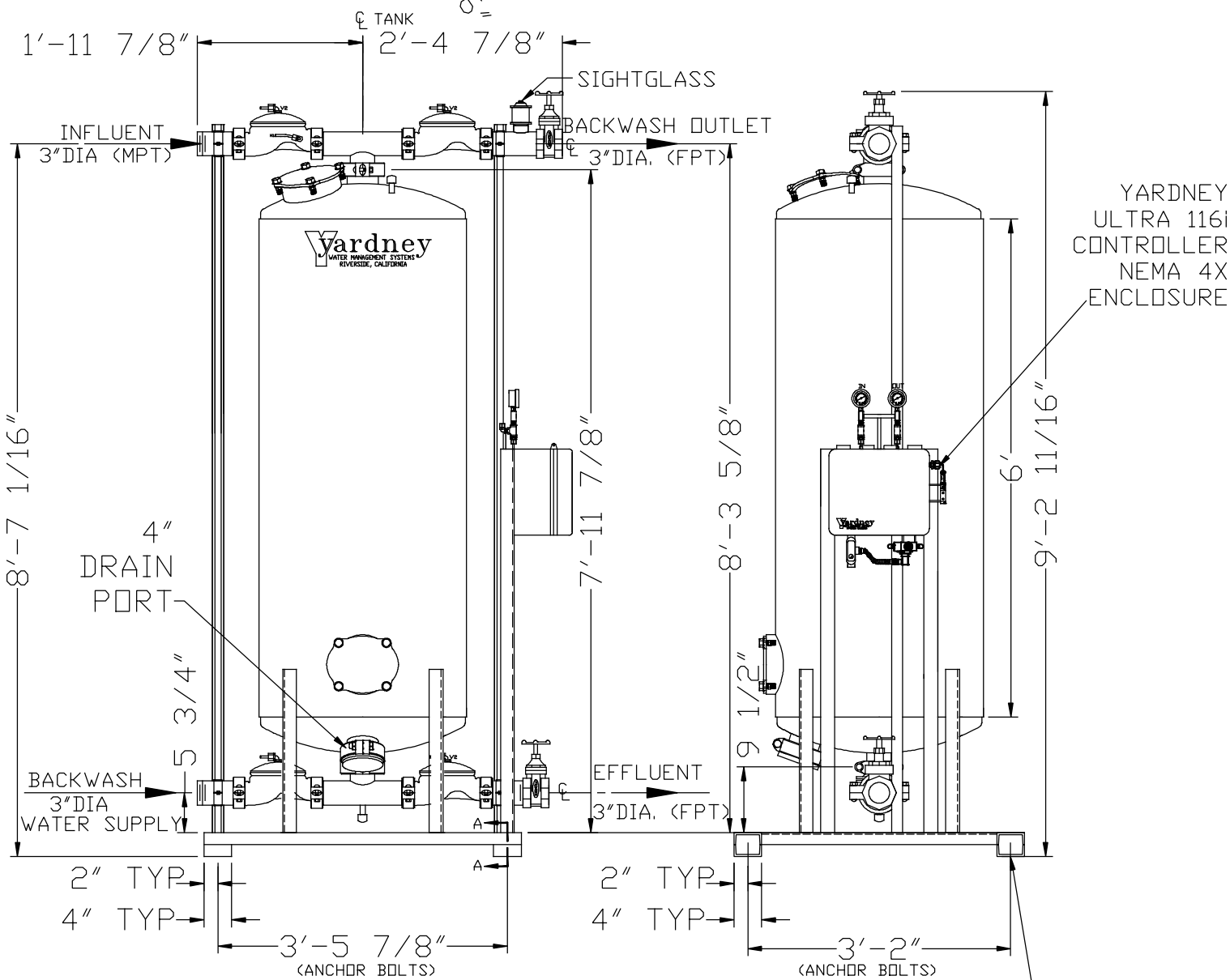
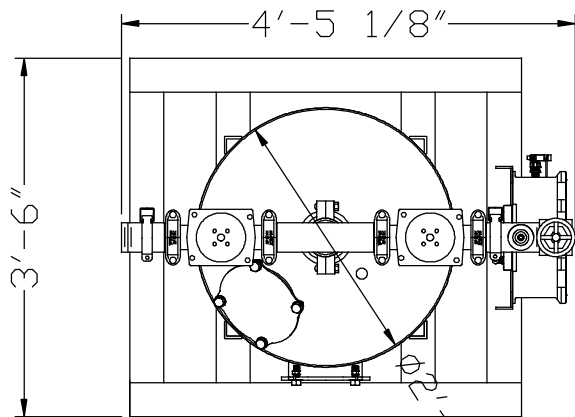


GAC 3072-1A

NOTES:

1. FLOW RATE DESIGN: 25-50 GPM.
BACKWASH RATE: 10 GPM/FT².
2. MAXIMUM WORKING PRESSURE: 100 PSI.
3. ELECTRICAL REQUIREMENTS:
CONTROLLER 120V;
SOLENOIDS 24VAC; FACTORY WIRED
4. AIR SUPPLY REQUIRED: 2 CFM @ 70 PSIG (MIN.).
5. MEDIA REQUIREMENT PER TANK:
A. 1/2"x3/4" CRUSHED ROCK: 2.5 CU. FT. .
B. GRANULAR ACTIVATED CARBON: 19.5 CU. FT. .
6. WEIGHTS: (APPROX.)
EQUIPMENT: 740 LBS (LESS MEDIA)
MEDIA: 866 LBS
OPERATION: 2,700 LBS



3/4" DIA. HOLE CENTERED ON BOTTOM PAD, 4 PLCS. (FOR 1/2" ANCHOR BOLTS)

THIS DRAWING, INCLUDING THE INFORMATION IT CONTAINS, IS CONFIDENTIAL, PROPRIETARY, AND IS THE PROPERTY OF YARDNEY WATER MANAGEMENT, INC. IT IS SUBMITTED ONLY IN CONNECTION WITH THE TRANSACTION TO WHICH IT PERTAINS AND MUST NOT BE USED IN ANY OTHER MANNER DETRIMENTAL TO THE INTERESTS OF YARDNEY WATER MANAGEMENT. THE DRAWING IS NOT TO BE COPIED AND MUST BE RETURNED UPON REQUEST COPYRIGHT YARDNEY WATER MANAGEMENT SYSTEMS, 1994.					
E	ADDED 4" DRAIN PORT	DTD 11-09	APP	APPROVALS	DATE
D	ADDED SIGHTGLASS	DTD 10-07	APP	BRW	11/12/24
C	CORRECTED GPM FLOW RATES	DTC 10-05	APP	CHK	11/12/24
B	STANDARDIZED NOTES	DTC 9-05	APP	CHK	
A	DORIT VALVE LENGTH INCORRECT WAS 9 13/16	DTC 1-05	APP	CHK	
SYM	REVISIONS	BY	DATE	APP	
SIZE D DRAWING NO. 9500307201 SCALE AS SHOWN SYSTEM GAC SHEET 1 OF 1					REV. E