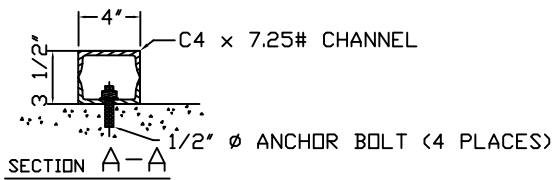
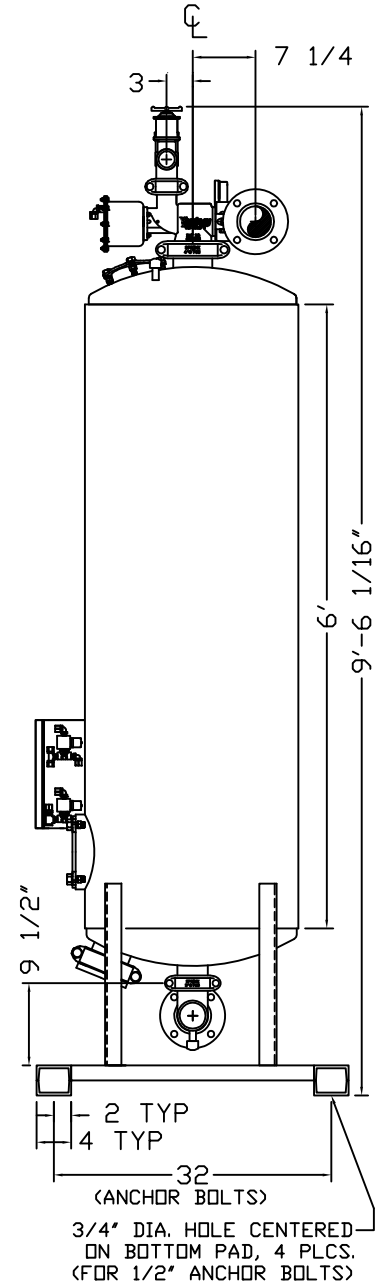
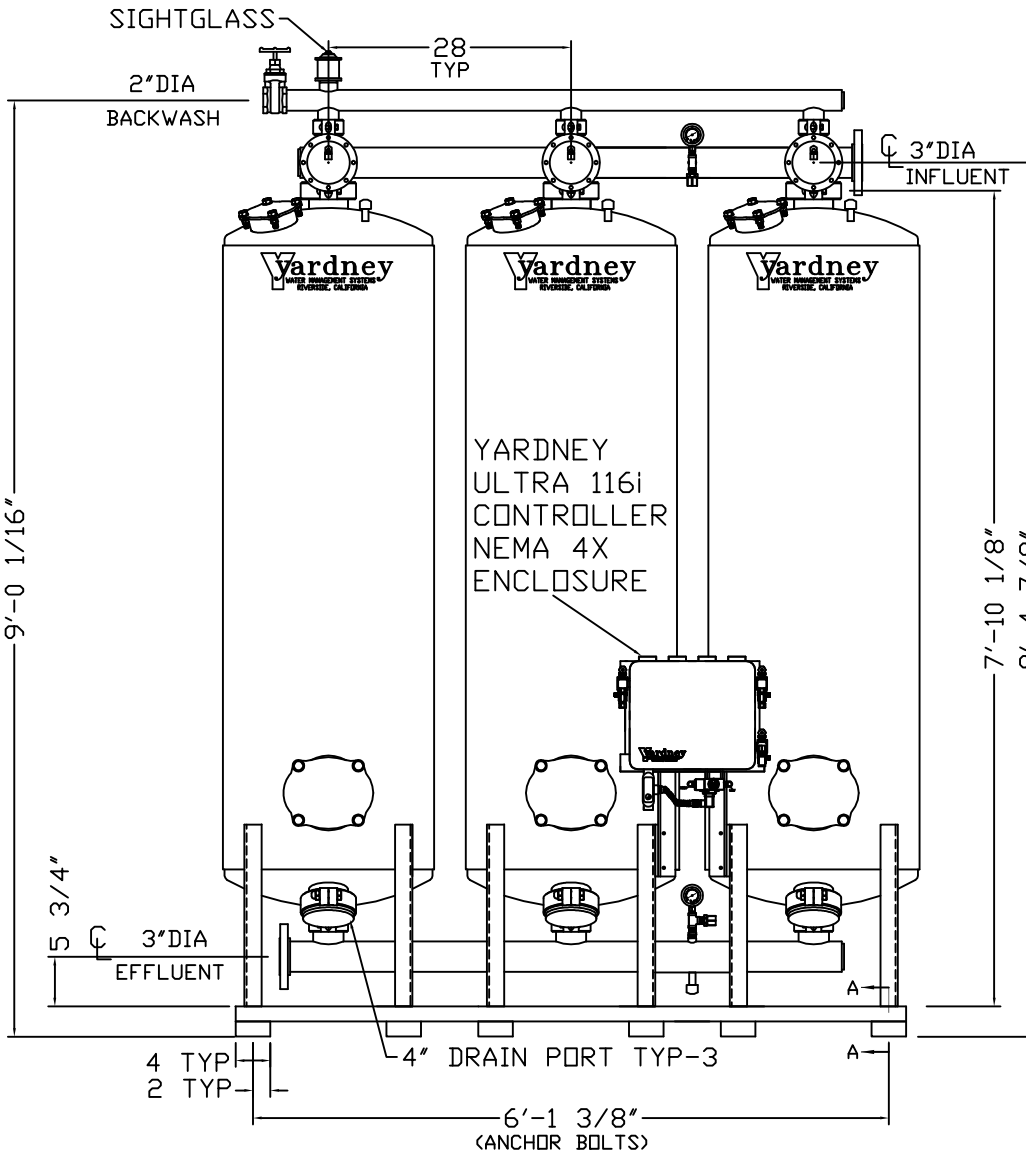
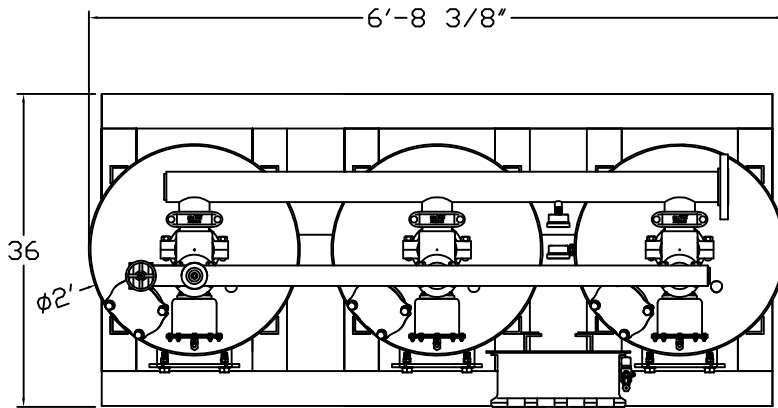


GAC 2472-3A

NOTES:

1. FLOW RATE DESIGN: 48-94 GPM.
BACKWASH RATE: 10 GPM/FT².
2. MAXIMUM WORKING PRESSURE: 100 PSI.
3. ELECTRICAL REQUIREMENTS:
CONTROLLER 120V;
SOLENOIDS 24VAC; FACTORY WIRED
4. AIR SUPPLY REQUIRED: 2 CFM @ 70 PSIG (MIN.).
5. MEDIA REQUIREMENT PER TANK:
A. 1/2"x3/4" CRUSHED ROCK: 15 CU. FT. .
B. GRANULAR ACTIVATED CARBON: 12.5 CU. FT. .
6. WEIGHTS: (APPROX.)
EQUIPMENT: 1,480 LBS (LESS MEDIA)
MEDIA: 1,538 LBS
OPERATION: 5,250 LBS



<p>THIS DRAWING, INCLUDING THE INFORMATION IT CONTAINS, IS CONFIDENTIAL, PROPRIETARY, AND IS THE PROPERTY OF YARDNEY WATER MANAGEMENT, INC. IT IS SUBMITTED ONLY IN CONNECTION WITH THE TRANSACTION TO WHICH IT PERTAINS AND MUST NOT BE USED IN ANY OTHER MANNER DETRIMENTAL TO THE INTERESTS OF YARDNEY WATER MANAGEMENT. THE DRAWING IS NOT TO BE COPIED AND MUST BE RETURNED UPON REQUEST.</p> <p>COPYRIGHT YARDNEY WATER MANAGEMENT SYSTEMS, 1994.</p>				<p>APPROVALS DATE</p> <p>DRAWN BY JMW/08/05</p>							
D	ADDED 4\"/>										
C	STANDARDIZED NOTES	DTC	9-05	APP	APPROVED BY	SIZE	D	DRAWING NO.	9500247203	REV.	D
A	UPDATED SKID	DTC	1-05	APP	APPROVED BY	NONE					
SYM	REVISIONS	BY	DATE	APP	FILED BY						



GAC 2472-3A
FILTER SYSTEM

9500247203
SYSTEM\GAC