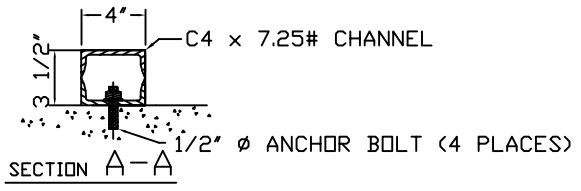
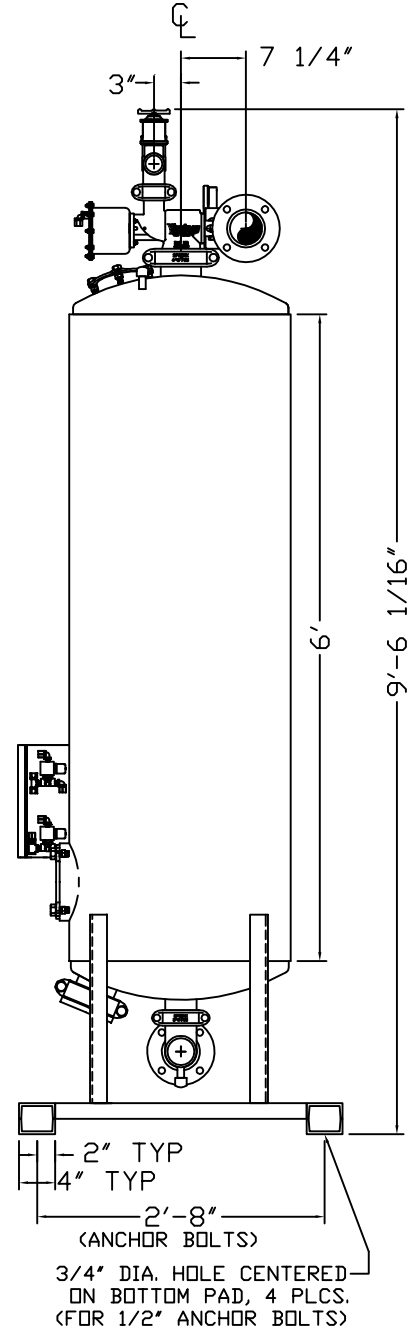
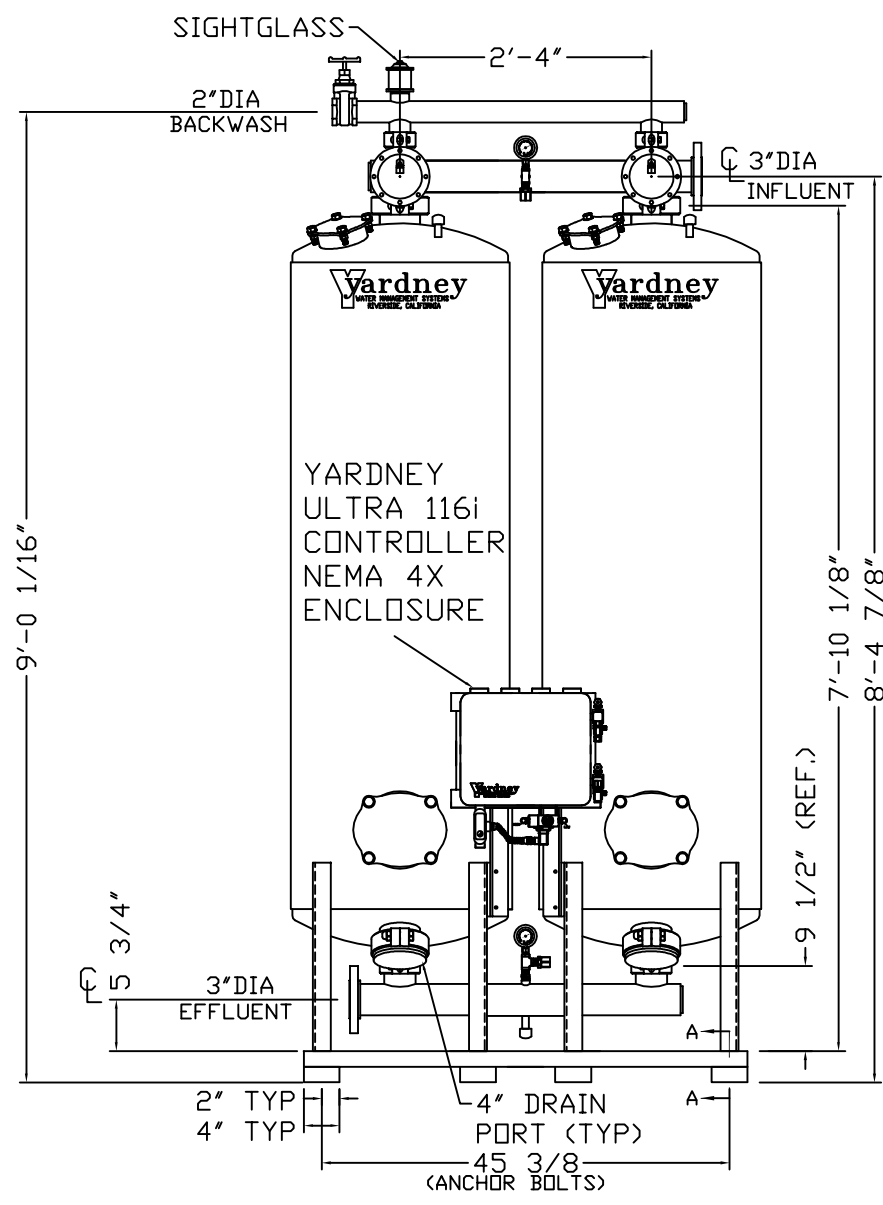
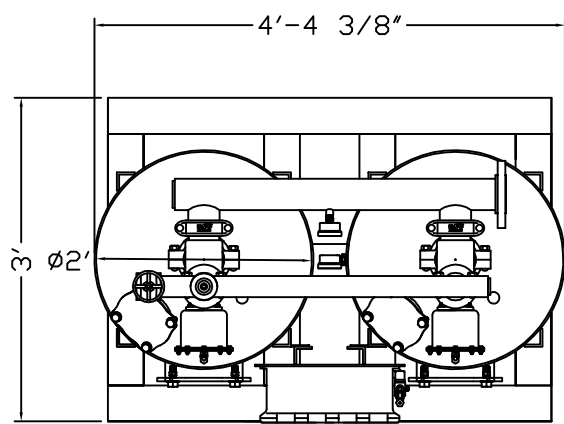


NOTES: **GAC 2472-2A**

1. FLOW RATE DESIGN: 32-64 GPM; MAX TO 120 GPM.
BACKWASH RATE: 10 GPM/FT².
2. MAXIMUM WORKING PRESSURE: 100 PSI.
3. ELECTRICAL REQUIREMENTS:
CONTROLLER 120V;
SOLENOIDS 24VAC; FACTORY WIRED
4. AIR SUPPLY REQUIRED: 2 CFM @ 70 PSIG (MIN.).
5. MEDIA REQUIREMENT PER TANK:
A. 1/2"x3/4" CRUSHED ROCK: 1.5 CU. FT. .
B. GRANULAR ACTIVATED CARBON: 12.5 CU. FT. .
6. WEIGHTS: (APPROX.)
EQUIPMENT: 975 LBS (LESS MEDIA)
MEDIA: 1,025 LBS
OPERATION: 3,450 LBS



DO NOT SCALE DWG.

Yardney
WATER MANAGEMENT SYSTEMS
RIVERSTIE, CALIFORNIA

GAC 2472-2A
FILTER SYSTEM

APPROVALS		DATE	BY
DESIGNED BY	DTD	11-09	APP
CHECKED BY	JDB	6/17/04	
APPROVED BY			
MANUFACTURED BY	NONE		
USED ON			

REV	DESCRIPTION	DATE	APP
0	ADDED 4\"/>		
1	CORRECTED GPM FLOW RATES	DTC 10-05	APP
2	STANDARDIZED NOTES	DTC 9-05	APP
3	UPDATED CONTROLLER	DTC 12-04	APP
4	REVISIONS		

SIZE	D	DRAWING NO.	9500247202	REV	D
SCALE	NONE	ACAD NO.	SYSTEM\GAC	SHEET	1 OF 1