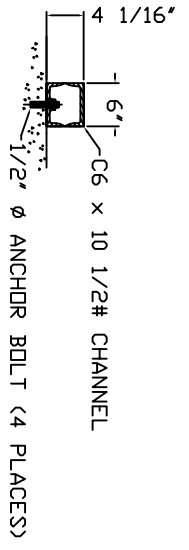
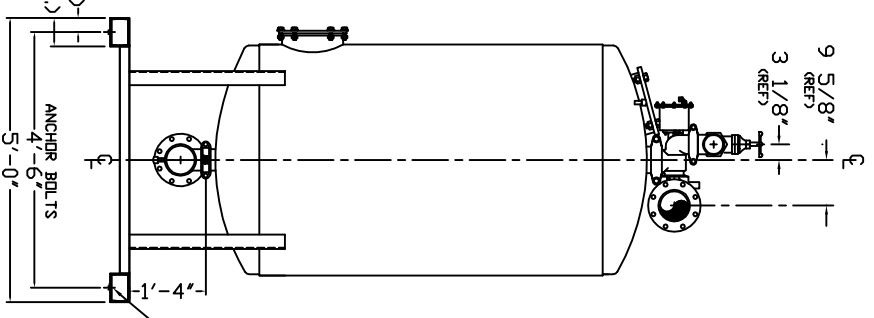
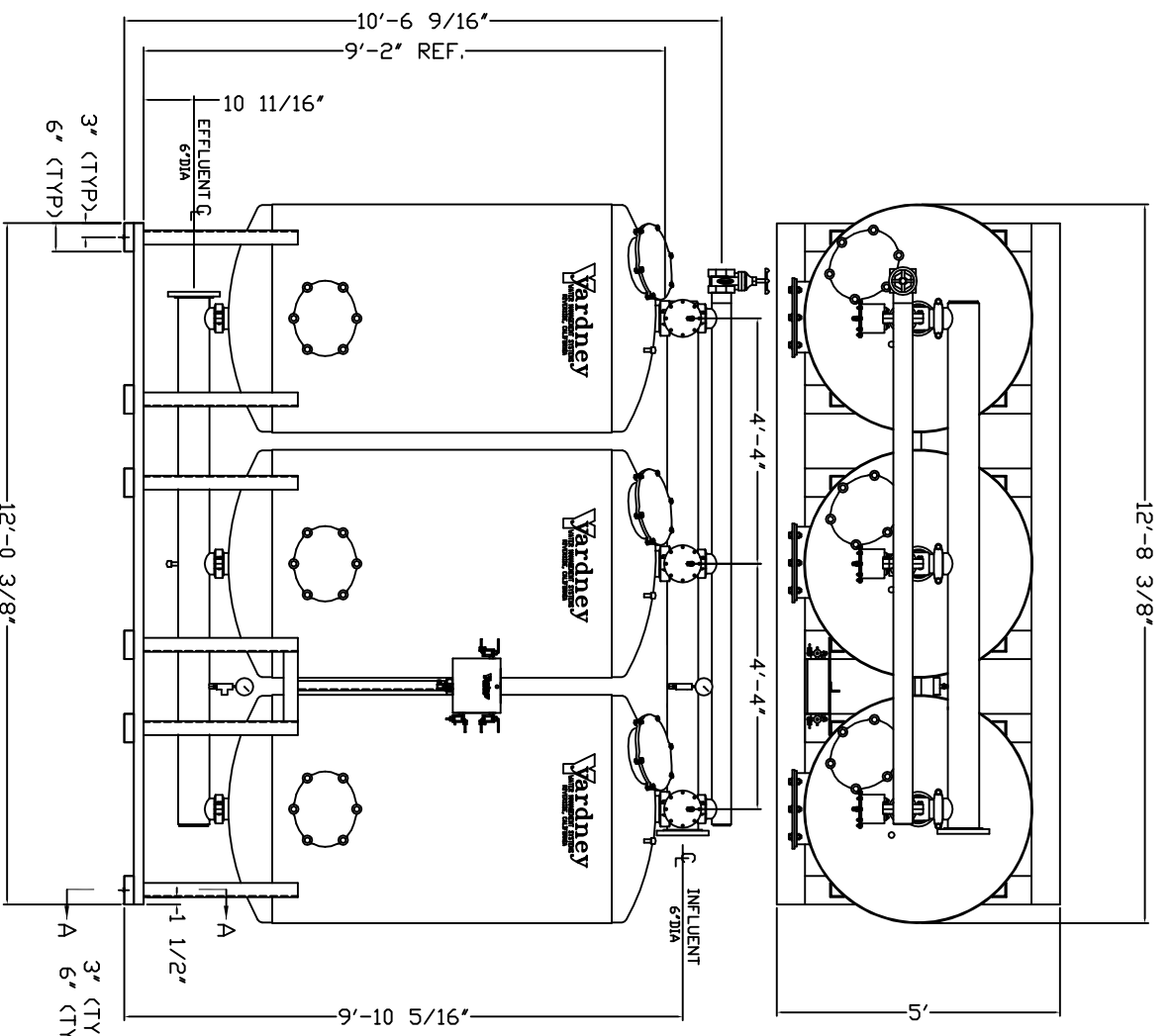


GAC 4872-3A

NOTES:

1. FLOW RATE DESIGN = 189-378 GPM, MAX TD 720 GPM
2. MAXIMUM WORKING PRESSURE - 80 PSI.
3. ELECTRICAL REQUIREMENTS:
 - CONTROLLER 120V/
 - SOLENOIDS 24VAC; FACTORY WIRED
4. AIR SUPPLY REQUIRED: 2 CFM @ 70 PSIG (MIN.)
5. MEDIA REQUIREMENT PER TANK:
 - A. 1/2"x3/4" CRUSHED ROCK - 7.0 CU. FT.
 - B. GRANULAR ACTIVATED CARBON - 50.0 CU. FT.
6. WEIGHTS: (APPROX.)
 - EQUIPMENT - 3,780 LBS
 - MEDIA - 6,450 LBS
 - OPERATION - 20,150 LBS
7. FLANGED INFLUENT-EFFLUENT AVAILABLE, CONSULT FACTORY.



3/4" DIA. HOLE CENTERED ON BOTTOM PAD, 4 PLES. (FOR 1/2" ANCHOR BOLTS)

<p>THIS DRAWING, INCLUDING THE INFORMATION IT CONTAINS, IS THE PROPERTY OF YARDNEY WATER MANAGEMENT SYSTEMS, INC. IT IS SUBMITTED ONLY IN CONNECTION WITH THE TRANSACTION TO WHICH IT PERTAINS AND MUST NOT BE REPRODUCED OR TRANSMITTED IN ANY FORM OR BY ANY MEANS, ELECTRONIC OR MECHANICAL, INCLUDING PHOTOCOPYING, RECORDING, OR BY ANY INFORMATION STORAGE AND RETRIEVAL SYSTEM, WITHOUT THE WRITTEN PERMISSION OF YARDNEY WATER MANAGEMENT SYSTEMS, INC. THE DRAWING IS NOT TO BE COPIED AND MUST BE RETURNED UPON REQUEST. THE DRAWING IS NOT TO BE COPIED OR REPRODUCED FOR ANY OTHER PROJECT OR SYSTEMS, 1994</p>		<p>APPROVALS DATE</p> <p>DESIGNED BY: JDB</p> <p>CHECKED BY:</p>
<p>STANDARDIZED NOTES</p> <p>REVISED GPM FLOW RATES</p>	<p>DTC 10-05</p> <p>DTC 9-05</p>	<p>DATE</p> <p>DATE</p>
<p>SYN</p>	<p>REV</p>	<p>DATE</p>



GAC 4872-3A
FILTER SYSTEM

9500487203
SYSTEM\GAC