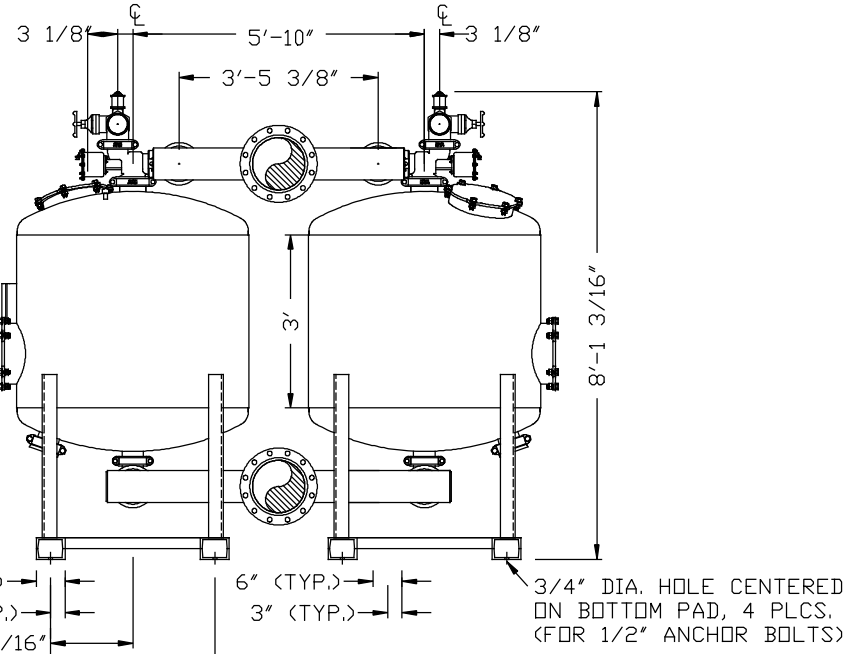
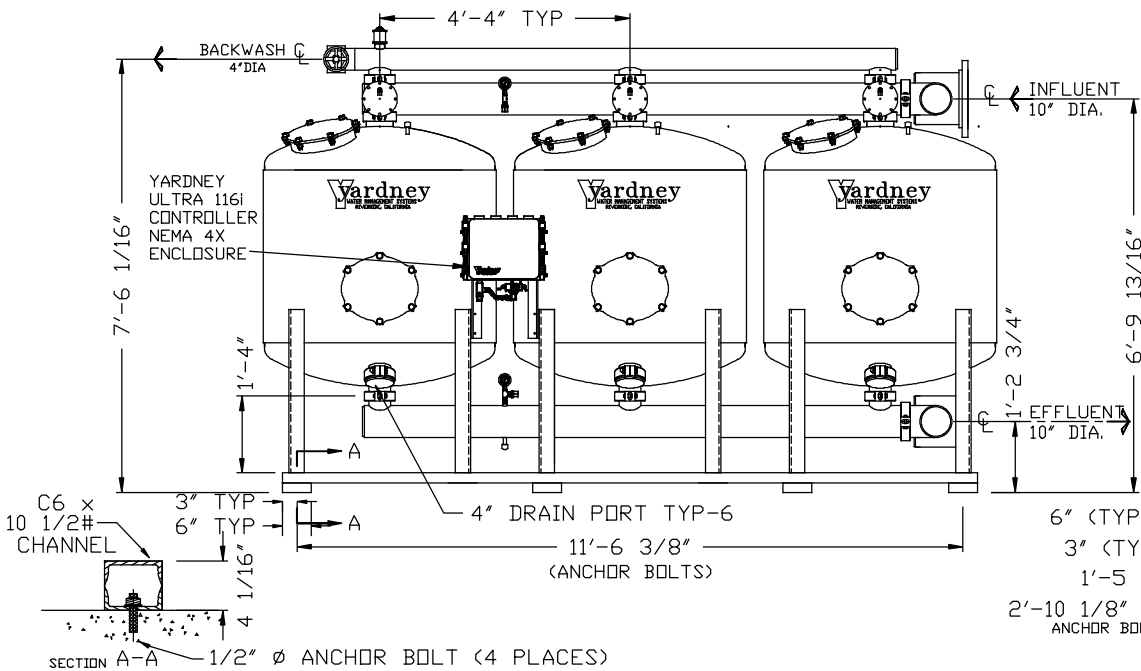
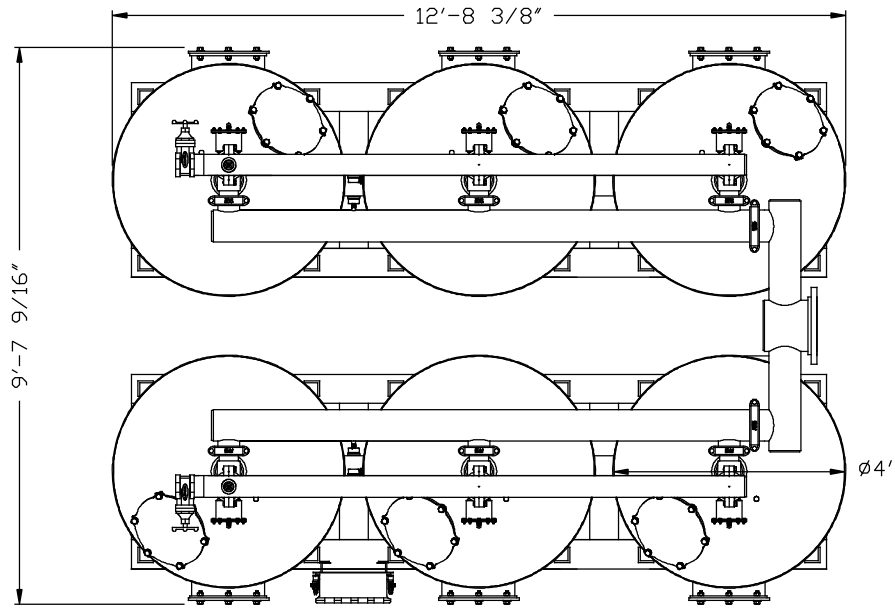


IL 4836-6A

NOTES:

- FLOW RATE DESIGN: 756-1,134 GPM.
BACKWASH RATE: 15 GPM/FT².
- MAXIMUM WORKING PRESSURE: 80 PSI.
- ELECTRICAL REQUIREMENTS:
CONTROLLER 120V;
SOLENOIDS 24VAC; FACTORY WIRED
- AIR SUPPLY REQUIRED: 2 CFM @ 70 PSIG (MIN.).
- MEDIA REQUIREMENT PER TANK:
A. 1/2"x3/4" CRUSHED ROCK: 7.0 CU. FT. .
B. 0.47mm CRUSHED SILICA SAND: 21.0 CU. FT. .
- WEIGHTS: (APPROX.)
EQUIPMENT: 5,930 LBS (LESS MEDIA)
MEDIA: 24,300 LBS
OPERATION: 36,500 LBS



THIS DRAWING, INCLUDING THE INFORMATION IT CONTAINS, IS CONFIDENTIAL, PROPRIETARY AND IS THE PROPERTY OF YARDNEY WATER MANAGEMENT, INC. IT IS SUBMITTED ONLY IN CONNECTION WITH THE TRANSACTION TO WHICH IT PERTAINS AND MUST NOT BE USED IN ANY OTHER MANNER DETRIMENTAL TO THE INTERESTS OF YARDNEY WATER MANAGEMENT. THE DRAWING IS NOT TO BE COPIED AND MUST BE RETURNED UPON REQUEST.
COPYRIGHT YARDNEY WATER MANAGEMENT SYSTEMS, 1993

		IL 4836-6A U-PATTERN	
		APPROVALS DRAWN BY: DTD DATE: 6-10-99	SIZE: D DRAWING NO: 9500483616 SCALE: 1/8" = 1'-0"
APPROVED BY: [Signature] ARCHITECTURAL TITLE: [Blank]	CHECKED BY: [Signature] USED IN: [Blank]	DATE: 11-09 APP: [Blank]	SHEET: 1 OF 1

SYMBOL	REVISIONS	BY	DATE	APP
A	ADDED 4" DRAIN PORT	DTD	11-09	APP