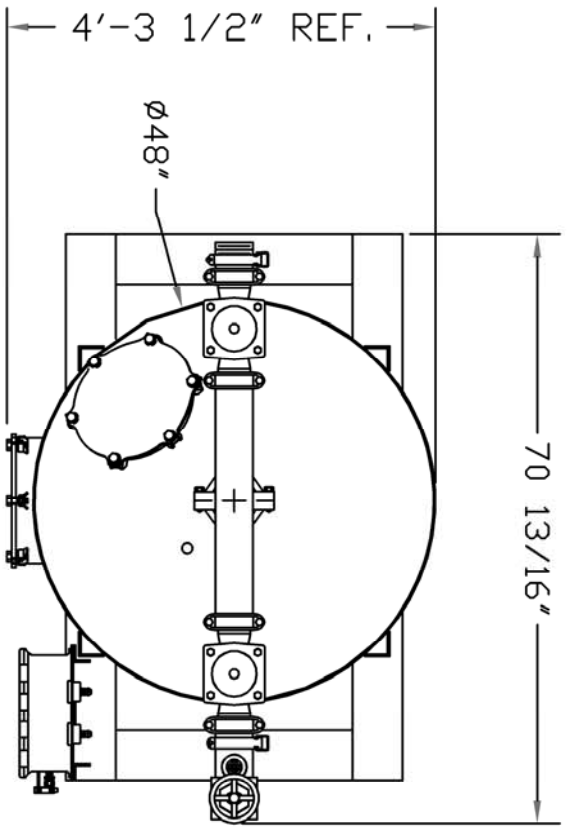
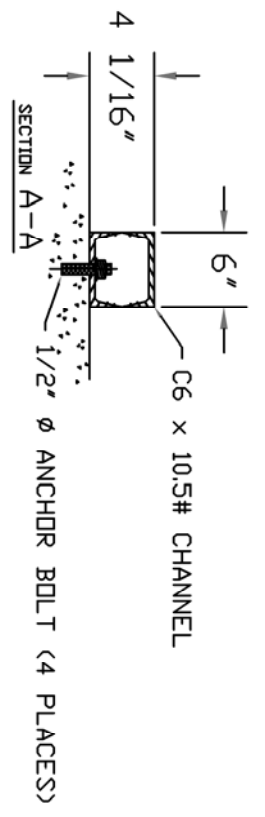
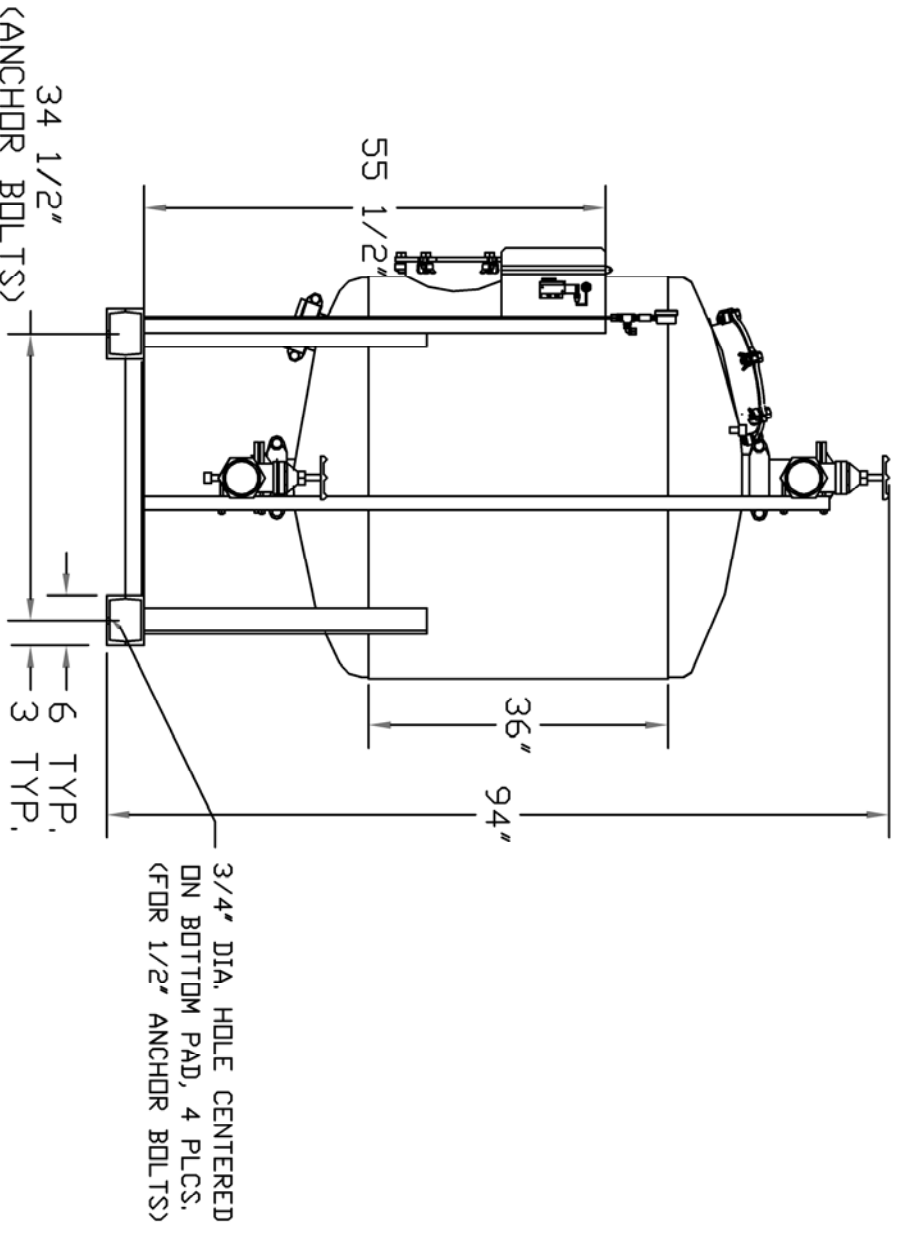
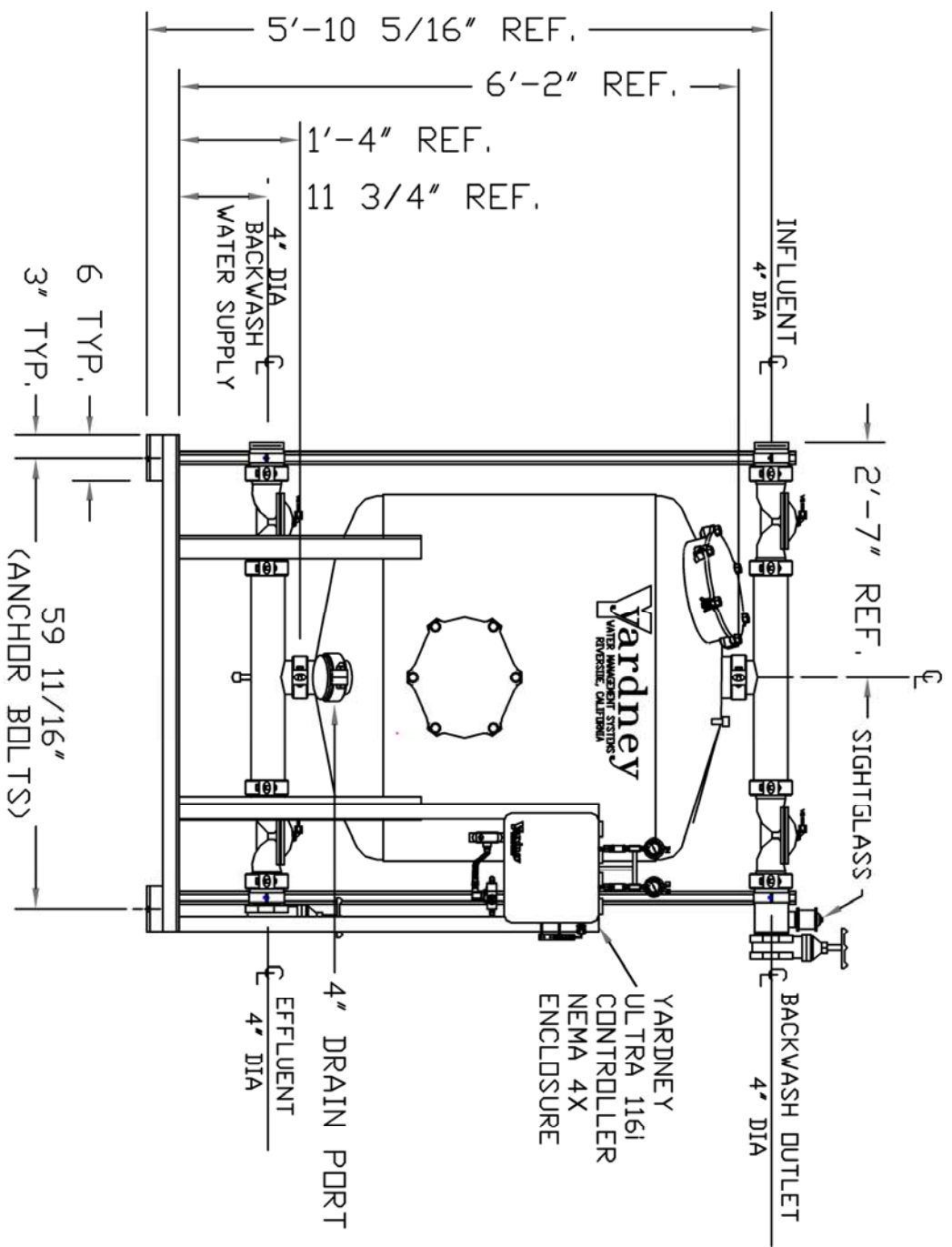


# IL 4836-1A



- NOTES:
1. FLOW RATE DESIGN: 126-189 GPM.  
BACKWASH RATE: 15 GPM/FT<sup>2</sup>.
  2. MAXIMUM WORKING PRESSURE: 80 PSI.
  3. ELECTRICAL REQUIREMENTS:  
CONTROLLER 120V,  
SOLENOIDS 24VAC, FACTORY WIRE  
AIR SUPPLY REQUIRED: 2 CFM @ 70 PSIG (MIN.).
  4. MEDIA REQUIREMENT PER TANK:  
A. 1/2"x3/4" CRUSHED ROCK;  
B. 0.47mm CRUSHED SILICA SAND: 33.5 CU. FT.
  5. MEDIA REQUIREMENT PER TANK:  
A. 1/2"x3/4" CRUSHED ROCK: 7.0 CU. FT.  
B. 0.47mm CRUSHED SILICA SAND: 33.5 CU. FT.
  6. WEIGHTS: (APPROX.)  
EQUIPMENT: 975 LBS (LESS MEDIA)  
MEDIA: 4,150 LBS  
OPERATION: 6,100 LBS



THIS DRAWING, INCLUDING THE INFORMATION IT CONTAINS, IS CONFIDENTIAL, PROPRIETARY, AND IS THE PROPERTY OF YARDNEY WATER MANAGEMENT, INC. IT IS SUBMITTED ONLY IN CONNECTION WITH THE TRANSACTION TO WHICH IT PERTAINS AND MUST NOT BE USED IN ANY OTHER MANNER DETRIMENTAL TO THE INTERESTS OF YARDNEY WATER MANAGEMENT. THE DRAWING IS NOT TO BE COPIED AND MUST BE RETURNED UPON REQUEST. COPYRIGHT YARDNEY WATER MANAGEMENT SYSTEMS, 1994.		CUSTOMER		DATE	
E	WELD TABS ON MANWAY RINGS	DTD	9-12	DRAWN BY	DTC
D	ADDED 4" DRAIN PORT	DTD	11-09	DATE	12-2-2004
C	CORRECTED GPM FLOW RATES	DTC	10-05	DRAWING NO.	9500483601
B	STANDARDIZED NOTES	DTC	9-05	LOCATION	SYSTEMS/IL
A	LOST DWG, CREATED NEW	DTC	12-04	REVISION	
NO.		BY	DATE		



IL 4836-1A  
FILTER SYSTEM