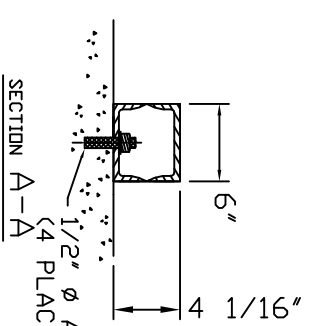
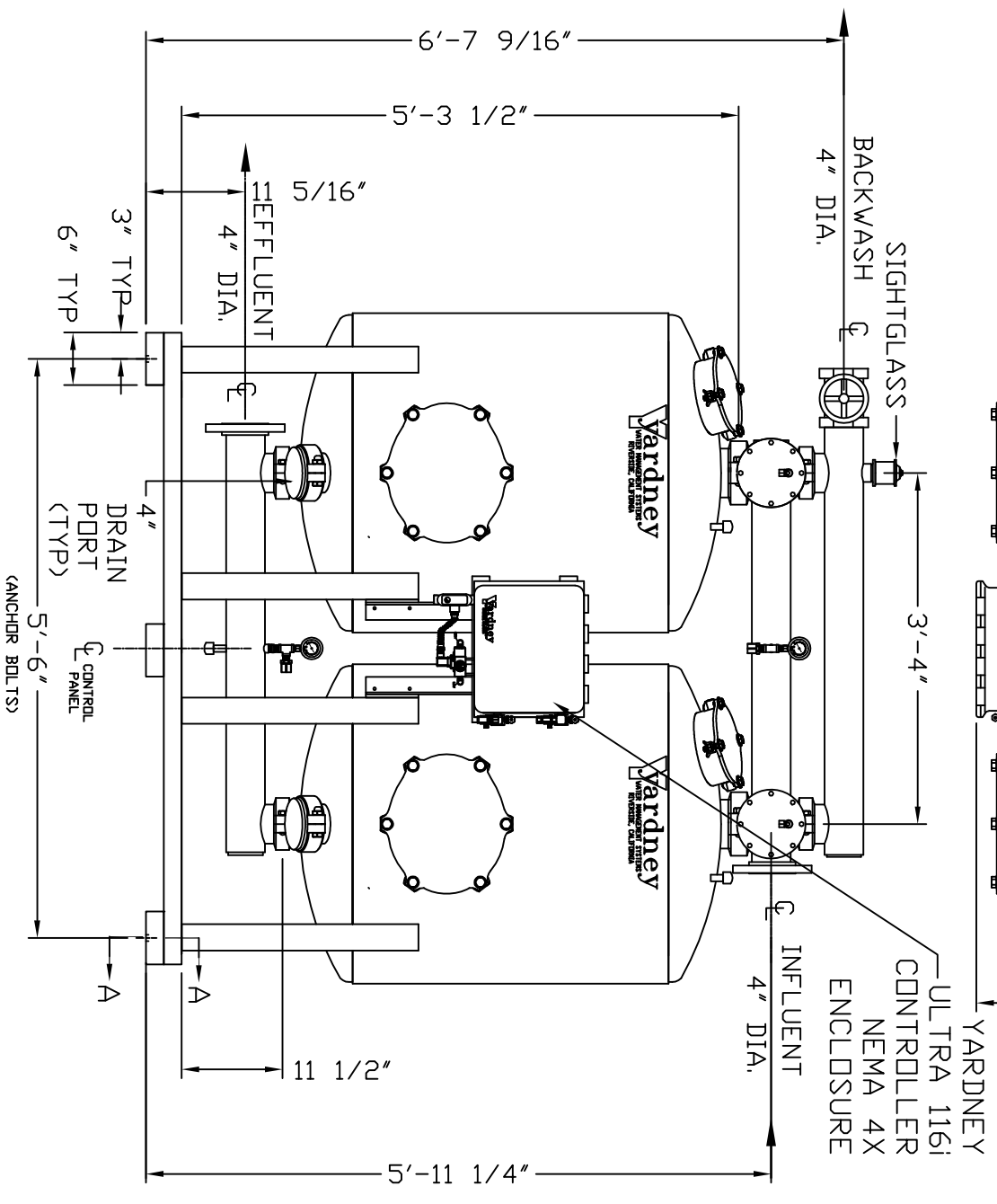
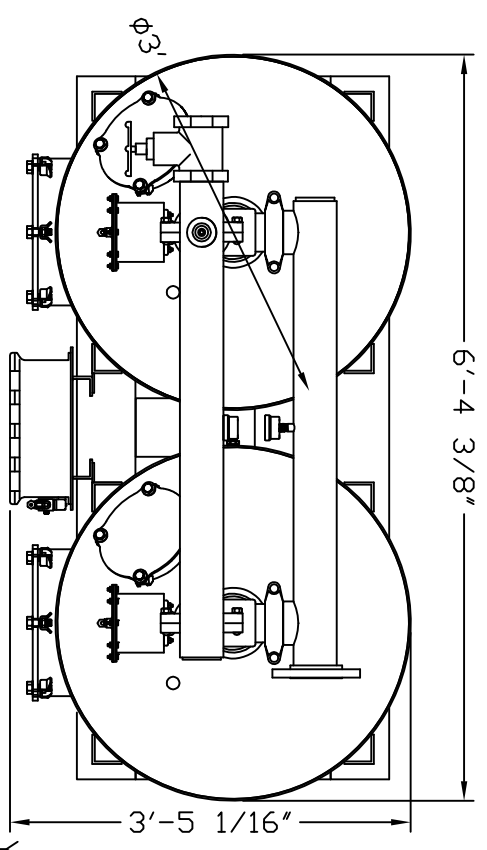
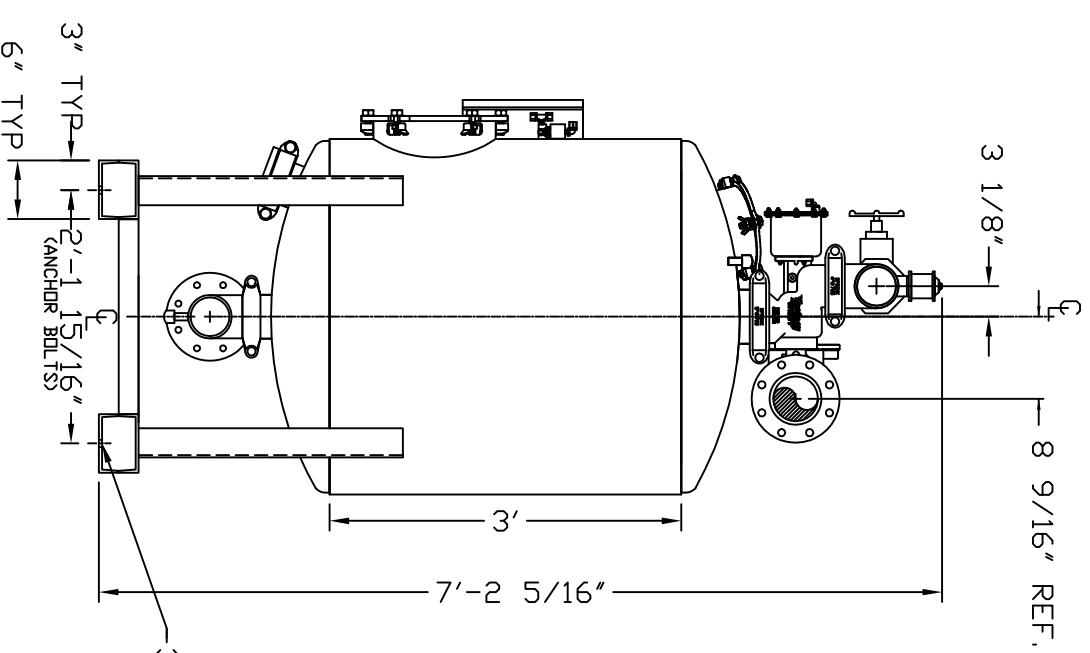


# IL 3636-2A



1. FLOW RATE DESIGN: 142-213 GPM, BACKWASH RATE: 15 GPM/FT<sup>2</sup>.
2. MAXIMUM WORKING PRESSURE: 100 PSI.
3. ELECTRICAL REQUIREMENTS: CONTROLLER 120V; SOLENOIDS 24VAC; FACTORY WIRED AIR SUPPLY REQUIRED: 2 CFM @ 70 PSIG (MIN.).
5. MEDIA REQUIREMENT PER TANK:
  - A. 1/2"x3/4" CRUSHED ROCK: 4.0 CU. FT.
  - B. 0.47mm CRUSHED SILICA SAND: 17.0 CU. FT.
6. WEIGHTS: (APPROX.)
  - EQUIPMENT: 1,200 LBS (LESS MEDIA)
  - MEDIA: 4,225 LBS
  - OPERATION: 6,550 LBS



3/4" DIA. HOLE CENTERED ON BOTTOM PAD, 4 PLCS. (FOR 1/2" ANCHOR BOLTS)

THIS DRAWING, INCLUDING THE INFORMATION IT CONTAINS, IS CONFIDENTIAL AND PROPRIETARY TO YARDNEY WATER MANAGEMENT SYSTEMS, INC. IT IS SUBMITTED ONLY IN CONNECTION WITH THE TRANSACTION TO WHICH IT PERTAINS AND MUST NOT BE USED IN ANY OTHER MANNER DETRIMENTAL TO THE INTERESTS OF YARDNEY WATER MANAGEMENT. THE DRAWING IS NOT TO BE COPIED AND MUST BE RETURNED TO THE DESIGNER IMMEDIATELY UPON COMPLETION OF THE PROJECT.			
D	VELD TABS ON MANWAY RINGS	DTD 9-12	APP
C	ADDED 4" DRAIN PORT	DTC 11-09	APP
B	CORRECTED GPM FLOW RATES	DTC 10-05	APP
A	STANDARDIZED NOTES	DTC 9-05	APP
SW	REVISIONS	BY DATE	APP



APPROVALS DATE: 9/16/09  
 DRAWN BY: SW  
 CHECKED BY: SW  
 DESIGNED BY: SW  
 REVISIONS: NONE  
 SCALE: NONE  
 SHEET 1 OF 1