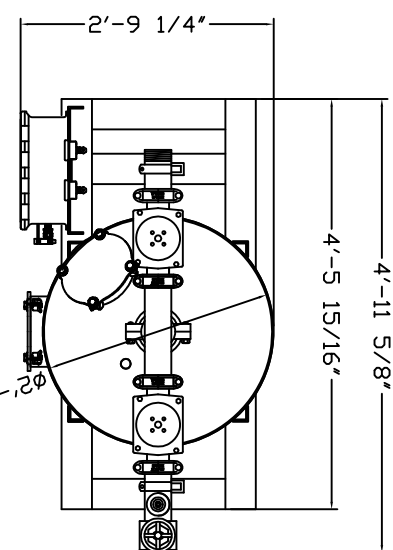
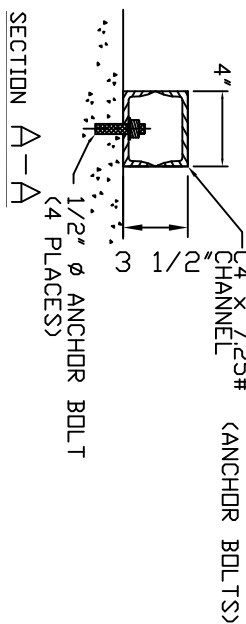
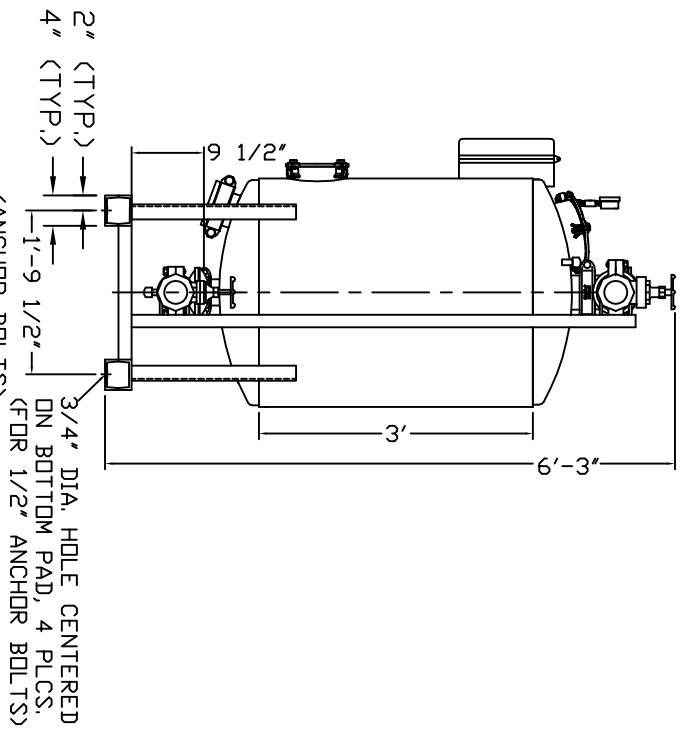
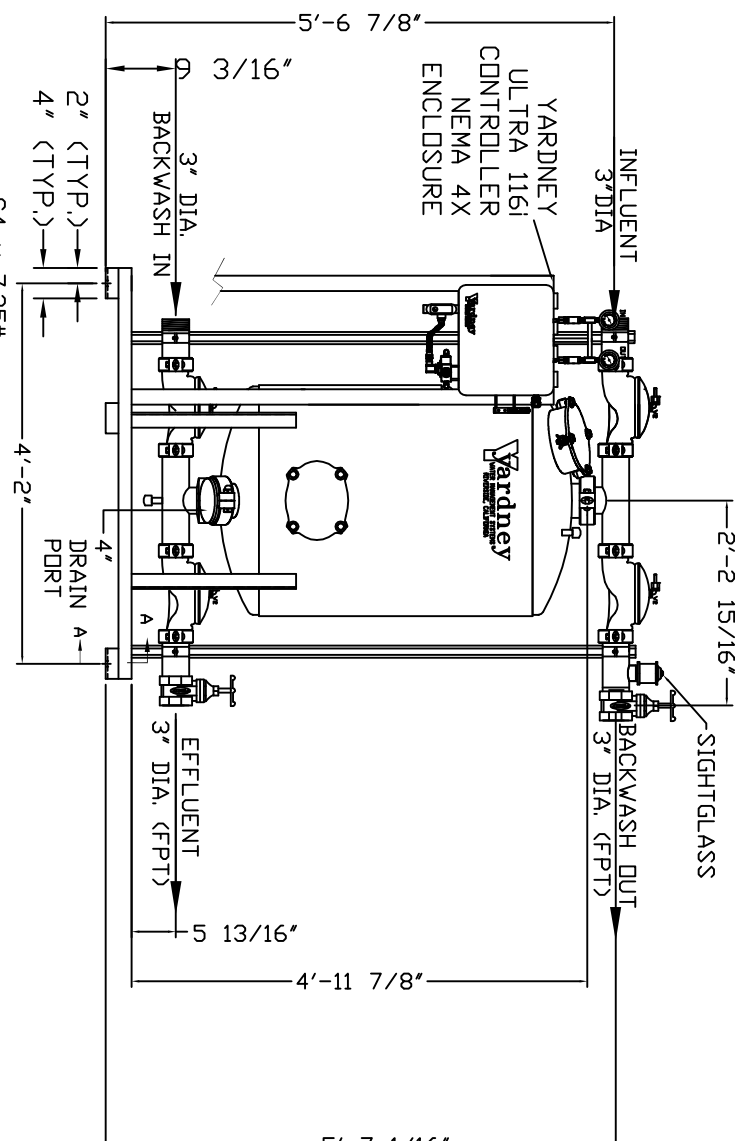


IL 3036-1A



- NOTES:
1. FLOW RATE DESIGN: 49-74 GPM.
BACKWASH RATE: 15 GPM/FT².
 2. MAXIMUM WORKING PRESSURE: 100 PSI.
 3. ELECTRICAL REQUIREMENTS:
CONTROLLER: 120V/
SOLENOIDS: 24VAC; FACTORY WIRE
AIR SUPPLY REQUIRED: 2 CFM @ 70 PSIG (MIN.).
 4. MEDIA REQUIREMENT PER TANK:
A: 1/2"x3/4" CRUSHED ROCK;
B: 0.47mm CRUSHED SILICA SAND: 12.0 CU. FT. .
 5. MEDIA REQUIREMENT PER TANK:
A: 1/2"x3/4" CRUSHED ROCK;
B: 0.47mm CRUSHED SILICA SAND: 12.0 CU. FT. .
 6. WEIGHTS: (APPROX.)
EQUIPMENT: 560 LBS (LESS MEDIA)
MEDIA: 1,500 LBS
OPERATION: 2,400 LBS



NO.	REVISION	BY	DATE	LOCATION	SYSTEMS/IL
A	DIRT VALVE LENGTH INCORRECT WAS 9 13/16	DTC	1-05		
B	STANDARDIZED NOTES	DTC	9-05		
C	CORRECTED GPM FLOW RATES	DTC	10-05		
D	ADDED 4\"/>				
E	WELD TABS ON MANWAY RINGS	DTC	9-12		



IL 3036-1A
FILTER SYSTEM

SECTION A-A