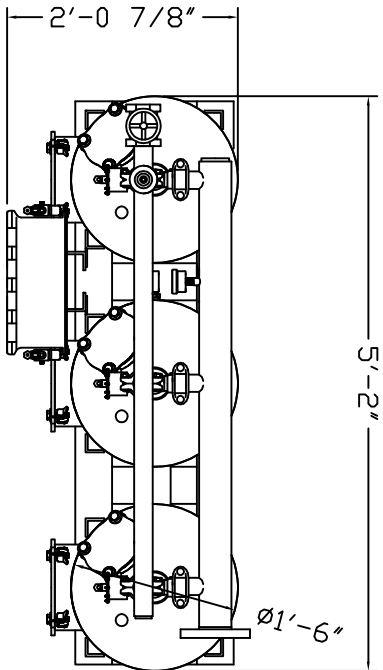
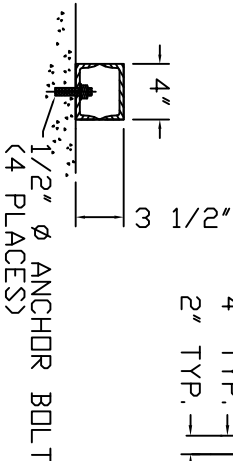
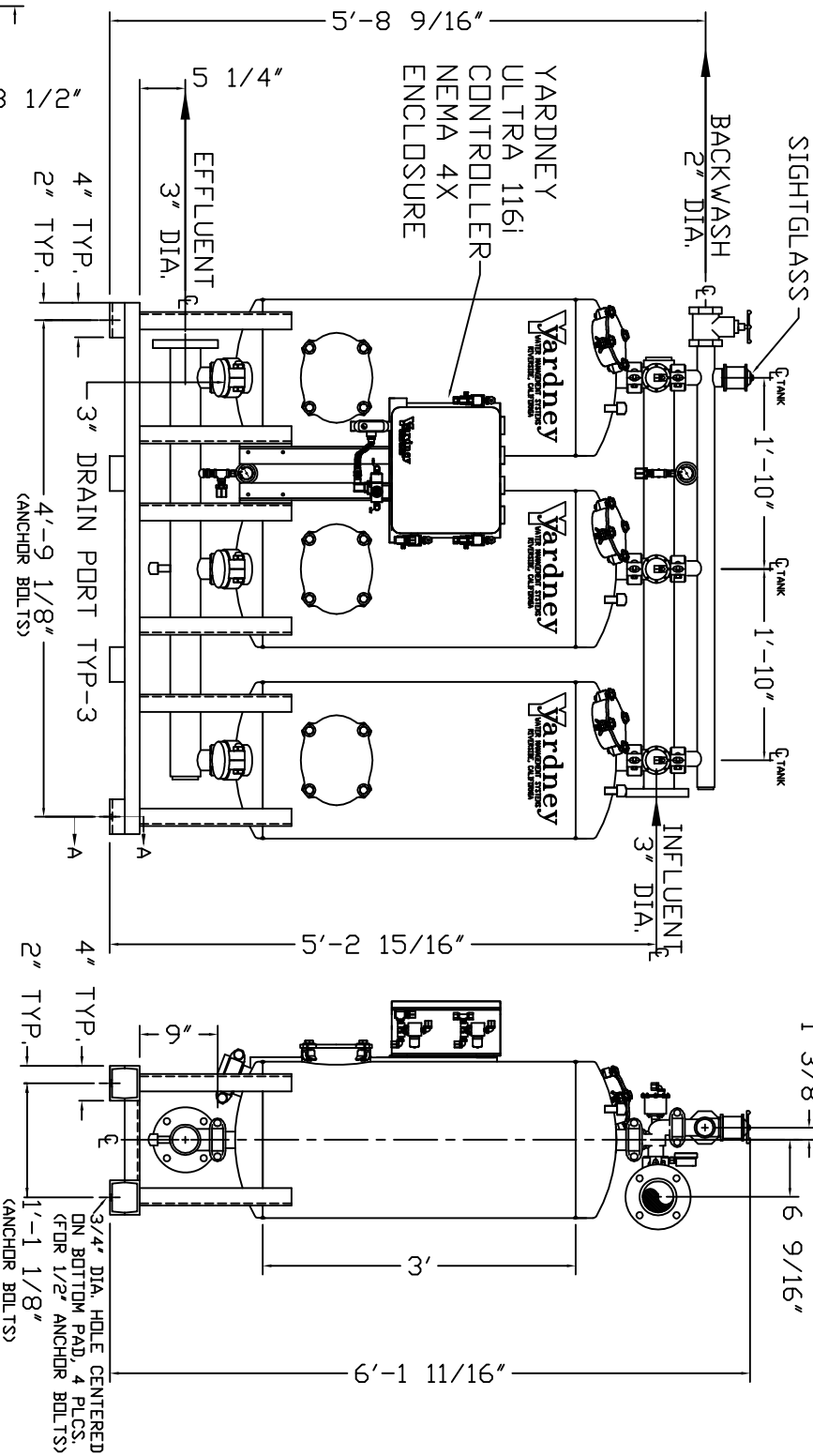


# IL 1836-3A



**NOTES:**

1. FLOW RATE DESIGN: 53-79 GPM.  
BACKWASH RATE: 15 GPM/FT<sup>2</sup>.
2. MAXIMUM WORKING PRESSURE: 100 PSI.
3. ELECTRICAL REQUIREMENTS:  
CONTROLLER 120V,  
SOLENOIDS 24VAC, FACTORY WIRED
4. AIR SUPPLY REQUIRED: 2 CFM @ 70 PSIG (MIN.).
5. MEDIA REQUIREMENT PER TANK:  
A. 1/2"x3/4" CRUSHED ROCK: 1.0 CU. FT.  
B. 0.47mm CRUSHED SILICA SAND: 2.5 CU. FT.
6. WEIGHTS: (APPROX.)  
EQUIPMENT: TBD LBS (LESS MEDIA)  
MEDIA: TBD LBS  
OPERATION: TBD LBS



**SECTION A-A**

<p>THIS DRAWING, INCLUDING THE INFORMATION IT CONTAINS, IS CONFIDENTIAL AND NOT BE LOANED, REPRODUCED, COPIED, OR DISCLOSED TO ANY OTHER PARTY WITHOUT THE WRITTEN PERMISSION OF YARDNEY WATER MANAGEMENT SYSTEMS, INC. IT IS SUBMITTED ONLY IN CONNECTION WITH THE TRANSACTION TO WHICH IT PERTAINS AND MUST NOT BE REPRODUCED OR TRANSMITTED IN ANY FORM OR BY ANY MEANS, ELECTRONIC OR MECHANICAL, INCLUDING PHOTOCOPYING, RECORDING, OR BY ANY INFORMATION STORAGE AND RETRIEVAL SYSTEM, WITHOUT THE WRITTEN PERMISSION OF YARDNEY WATER MANAGEMENT SYSTEMS, INC. AND MUST BE RETURNED UPON REQUEST.</p>	
<p>APPROVALS DATE</p> <p>DESIGNED BY: [ ]</p> <p>CHECKED BY: [ ]</p> <p>DATE: [ ]</p>	<p>Yardney WATER MANAGEMENT SYSTEMS, INC. 10000 W. 10th Ave., Suite 100 Denver, CO 80202</p>
<p>PROJECT NO. IL 1836-3A</p> <p>CLIENT: [ ]</p> <p>DATE: [ ]</p>	<p>NO PART SCALE DWG.</p>
<p>REV. NO. 1</p> <p>DESCRIPTION: [ ]</p>	<p>DATE: [ ]</p>